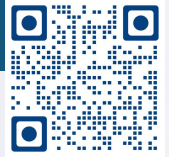


Scan for copy



# Discovery and Exploration

MAY 2024

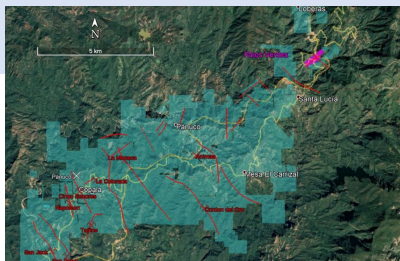
## Three Projects: Catalyst Rich Exploration Portfolio

- Silver in Mexico: Palos Verdes
- Gold in Mexico: Los Pavitos
- Copper in Arizona: Hot Breccia



### 01

#### PANUCO DISTRICT: Vizsla Silver Partnership



- Vizsla / Prismo technical committee focused on district scale potential: **Dr. Peter Megaw** (Prismo); Dr. Jesus Velador (Vizsla); & Dr. Craig Gibson (Prismo)
- Drilling highlights at Palos Verdes: **102g/tAu, 3,100g/tAg (11,520g/tAgEq) over 0.5m**

### 02

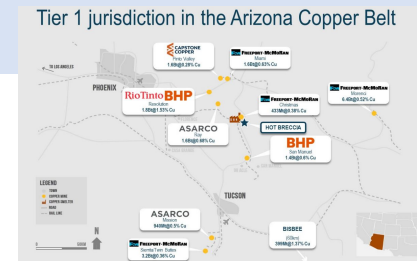
#### LOS PAVITOS: Multi-million oz gold potential



- Unexplored new gold district - **shear-hosted orogenic gold potential**, analogous to some of Sonora's largest gold mines
- Initial project **drilling yielded 10.2g/tAu, 47g/tAg** over 6.65m in hole LPSC23-02
- Key drivers:** Dr. Peter Megaw / Rafael Gallardo

### 03

#### HOT BRECCIA: Optionality in a world class district

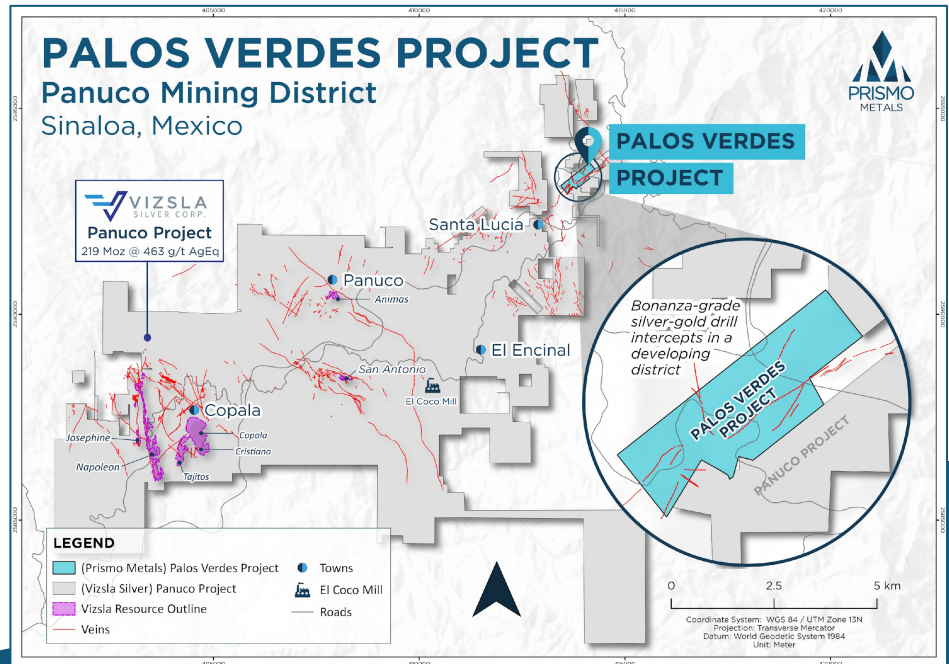


- Copper-gold in Arizona**, adjacent to past-producing skarn Christmas copper mine
- Historic Kennecott & Phelps Dodge drilling** intersected hydrothermal alteration within volcanics - Paleozoic carbonate host units have multiple holes at +1%Cu

# Palos Verdes Project

 **Developing Ag-Au District, Sinaloa State Mexico**

- Drilled 6,000 meters in 33 holes
- Bonanza grade intercepts:
  - Best intercept: drill hole PV-23-25 cut 0.5 meters with 102 g/t Au and 3,100 g/t Ag, or 11,520 g/t silver equivalent
- Deeper drilling planned for 2024
- Vizsla Silver Corp. is a strategic investor



## Successful explorers

**Four successful explorers** with multiple major discoveries:



**Alain Lambert**  
CEO &  
Co-founder



**Steve Robertson**  
President



**Dr. Craig Gibson**  
CXO &  
Co-founder



**Dr. Peter Megaw**  
Advisor

# Los Pavitos Project

**5,300 hectares in Alamos District, Sonora State Mexico**

- Drilled Phase I program of 2,370 meters in 25 core holes
- High grade gold intercepts:
  - Best intercept to date: hole LP-SC-23-02 cut 11.93 meters with 5.77 g/t Au and 31 g/t Ag, with 6.65 meters with 10.22 g/t gold
- Further exploration planned for 2024:
  - Mapping & sampling, geophysics, continued drilling



## Capital Structure

Shares held by officers, directors & advisors	11,383,751	28.1%
Vizsla Silver Corp (TSXV: VZLA)	4,000,000	9.9%
December 2022 Investors @ 52 cents	5,800,000	14.3%
Float	19,327,72	47.7%
<b>Total Shares Outstanding (basic)</b>	<b>40,511,480</b>	<b>100%</b>
Founders Warrants <sup>(1)</sup>	700,000	
Officers, directors & advisors options <sup>(2)</sup>	3,050,000	
Officers, directors & advisor SARs & RSUs	1,850,000	
Warrants (institutions - strike price \$0.75)	2,900,000	
Warrants (Vizsla Silver - strike price \$0.75)	2,000,000	
Sub total	10,500,000	
<b>Total Outstanding (Fully diluted)</b>	<b>51,346,480</b>	

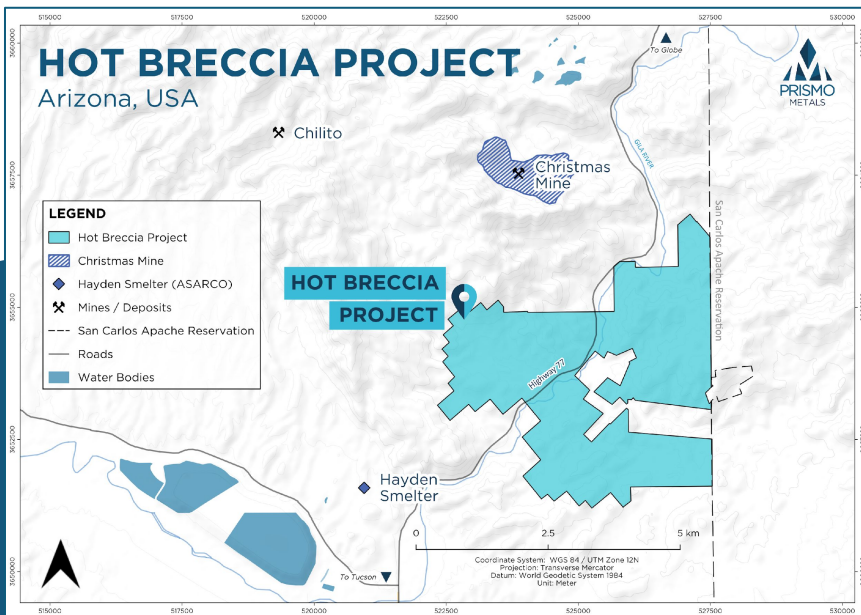
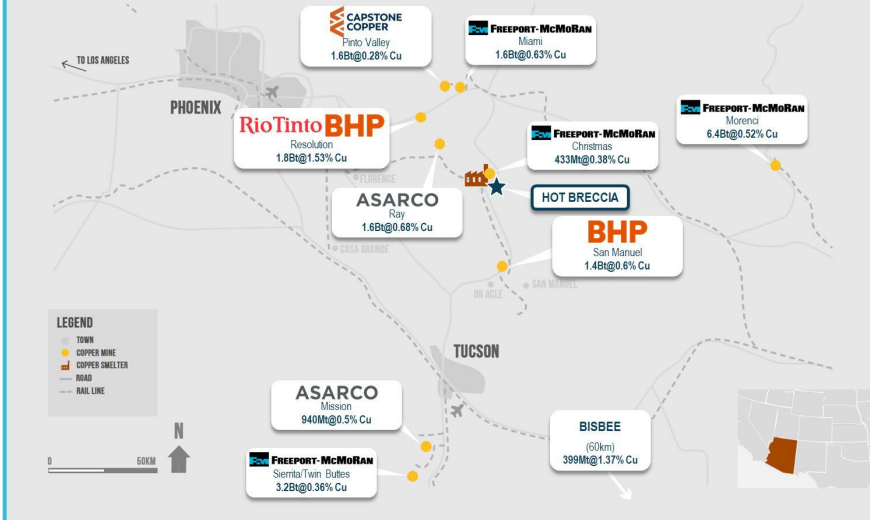
(1) Exercisable at \$0.10 per share  
 (2) WAEP of \$0.27

# Hot Breccia Project

**1,420 Hectares** in Heart of Arizona Copper Belt

- Near several major mines: current, historic and future producers
- **Excellent infrastructure**
  - 90-minute drive from Phoenix and Tucson
  - Near Ray mine and Hayden smelter
- **Adjacent to Freeport's Christmas mine:**
  - Skarns: historic production of 363 million lbs copper
  - Porphyry: inventory of 1.7 billion lbs copper

## Tier 1 jurisdiction in the Arizona Copper Belt



- **Historic drilling. Proven exploration concept:**
  - 77' with 0.54% Cu
  - 60' with 1.4% Cu, 4.65% Zn
  - 25' with 1.73% Cu and 0.11% Zn and 15' with 1.4% Cu and 0.88% Zn