

# Palos Verdes



CSE: PRIZ  
OTCQB: PMOMF

- Surrounded by Vizsla Silver (TSXV: VZLA)
- Vizsla: strategic partner with 9.9% ownership in Prismo Metals
- Within the historic Panuco silver-gold district in Sinaloa, Mexico with important historic precious metal production
- Important mining region with several current and past exploration projects:
  - Panuco project, Picachos project, Plomosas & Trinidad projects
- Located on the interstate highway from Mazatlan to Durango with excellent infrastructure
- 50 km from Mazatlan
- Sierra Madre Au-Ag Belt



The Palos Verdes Property location in Sinaloa State, northwestern Mexico. Located in west central Sinaloa, about 50 km northeast of Mazatlán.

# Panuco District

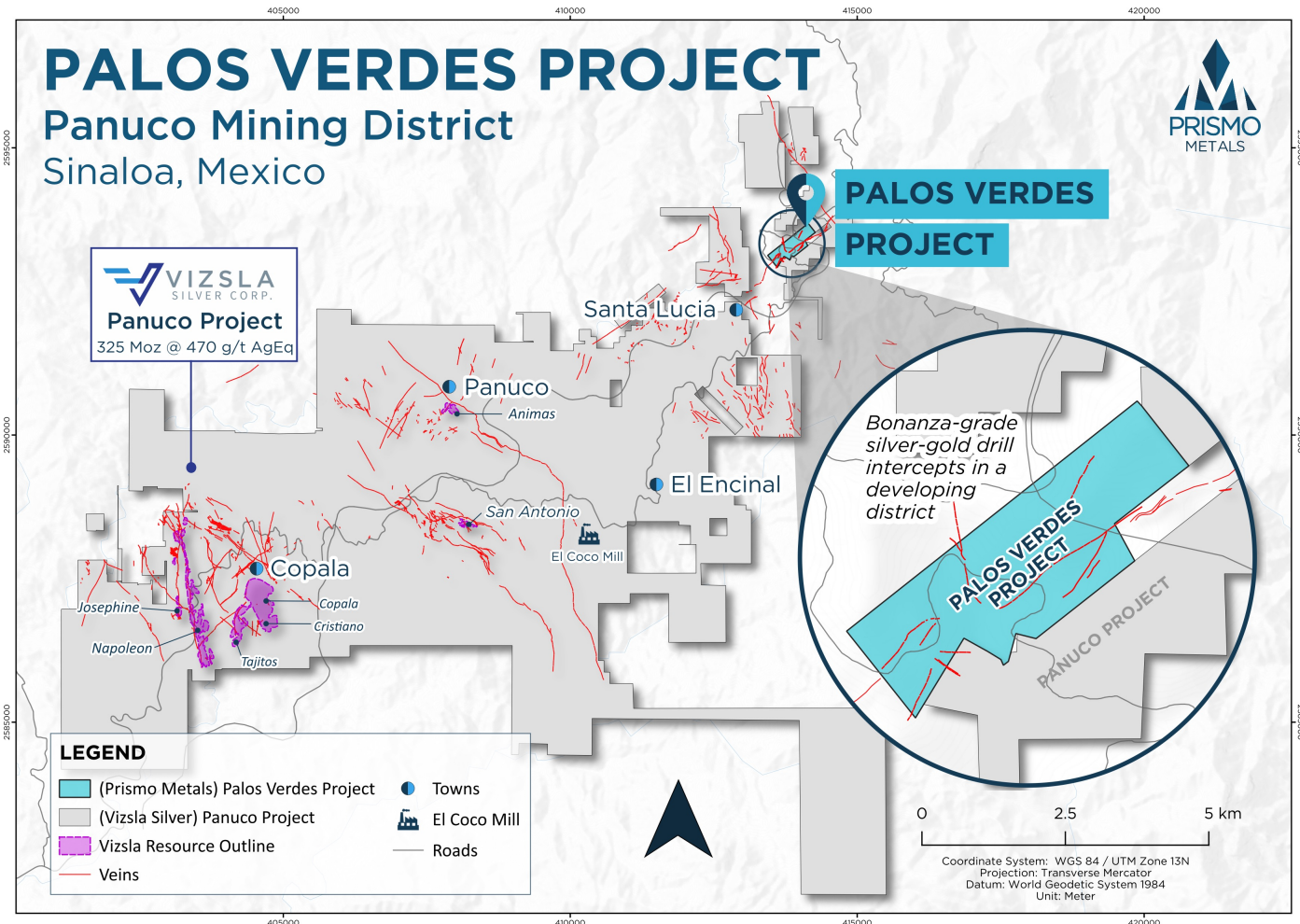
## Panuco district

- Much of the district has been consolidated by Vizsla Silver Corp., Prismo's strategic partner
- Rapidly developed large precious metal resource, 155.8Moz Ag equivalent indicated resources with 169.6Moz Ag equivalent inferred
- Robust PEA with 85.7% IRR and 15.2moz silver equivalent per year production
- Planned 3,300 tpd production with initial 10+ year mine life

## Palos Verdes

- Near the northeastern limit of Panuco district
- At higher structural level - less erosion
- Mineralized portion of the vein appears to be entirely preserved
- Surrounded by Vizsla Silver

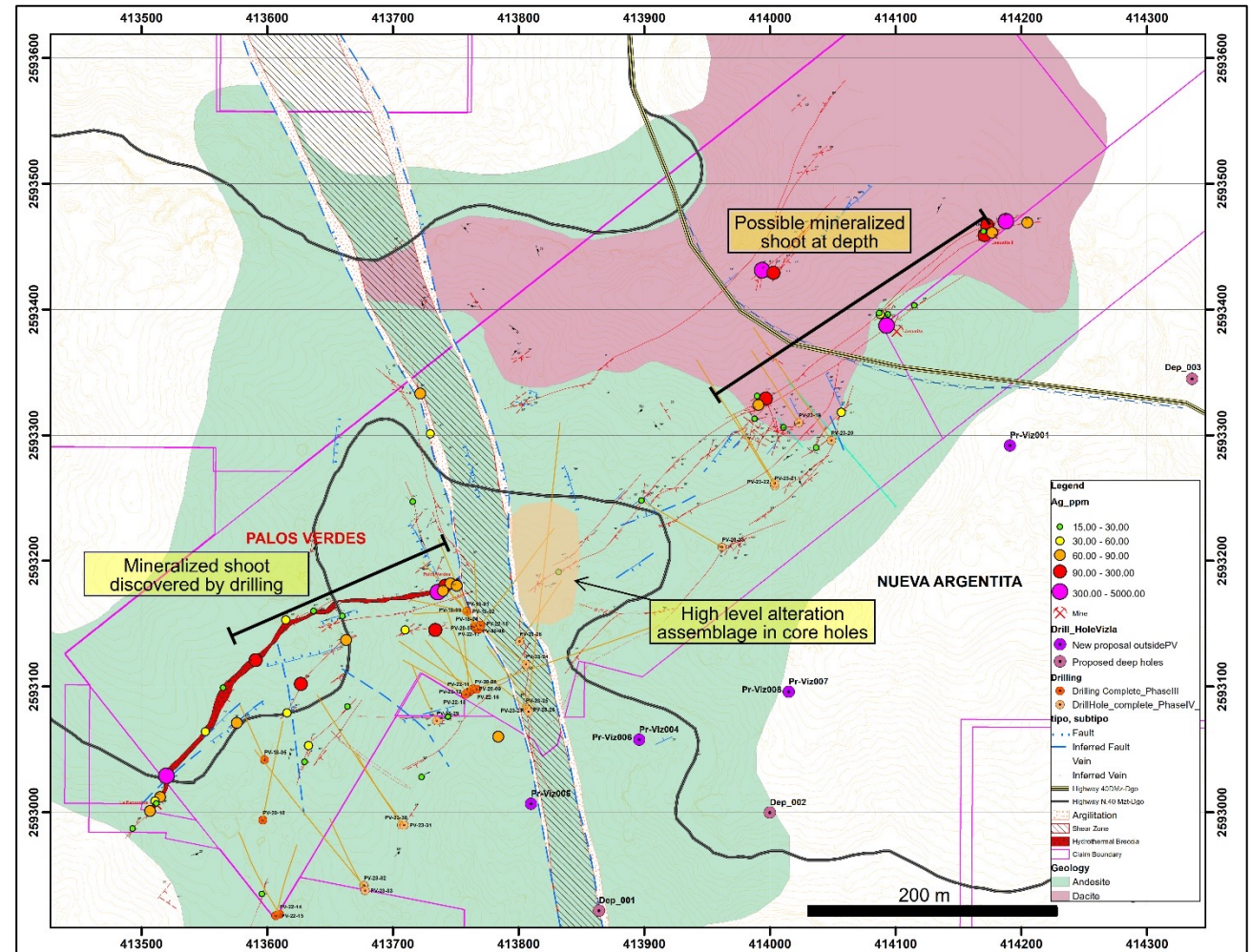
Land map for the Panuco Copala district showing the Palos Verdes Property location in light blue in the northeastern portion of the district, with Vizsla Resources in gray. Important vein orientations are northwest and northeast.



# Exploration Results

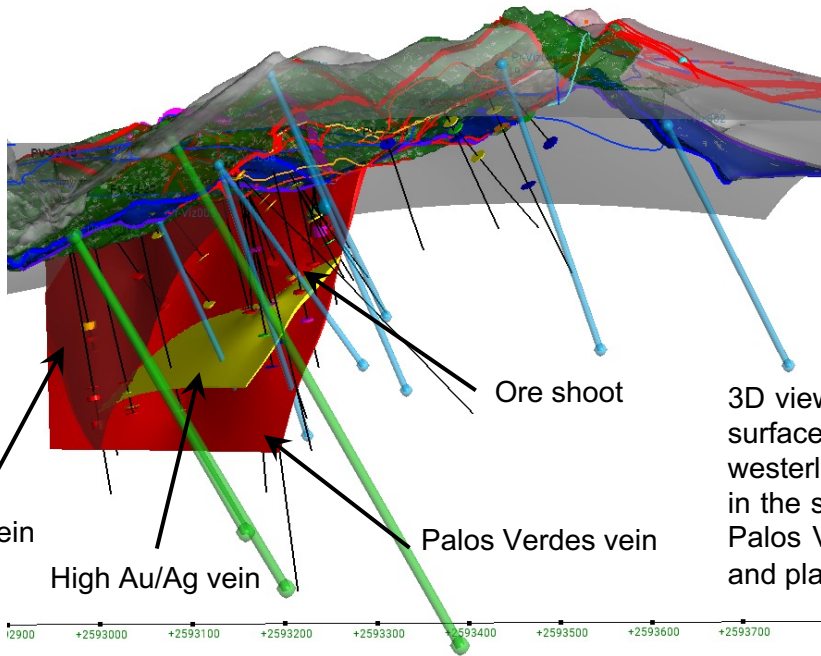
- 6,052 meters completed in 33 holes
- Bonanza grade intercepts in mineralized shoot
- Drill hole PV-18-02 cut:
  - 8.42 g/t Au, 2,335.98 g/t Ag, 0.27% Cu, 1.72% Pb and 2.46% Zn or **3,205 g/t silver equivalent over 1.15 m**
- Drill hole PV-23-25 cut the best intercept to date at the project:
  - With 102 g/t Au and 3,100 g/t Ag, or **11,520 g/t silver equivalent over 0.5 meters**
  - This intercept is part of a wider mineralized interval with **4,311 g/t Ag equivalent over 1.35 meters**

Geologic map of the Palos Verdes and surrounding concessions showing completed drill holes and planned deep drill holes.



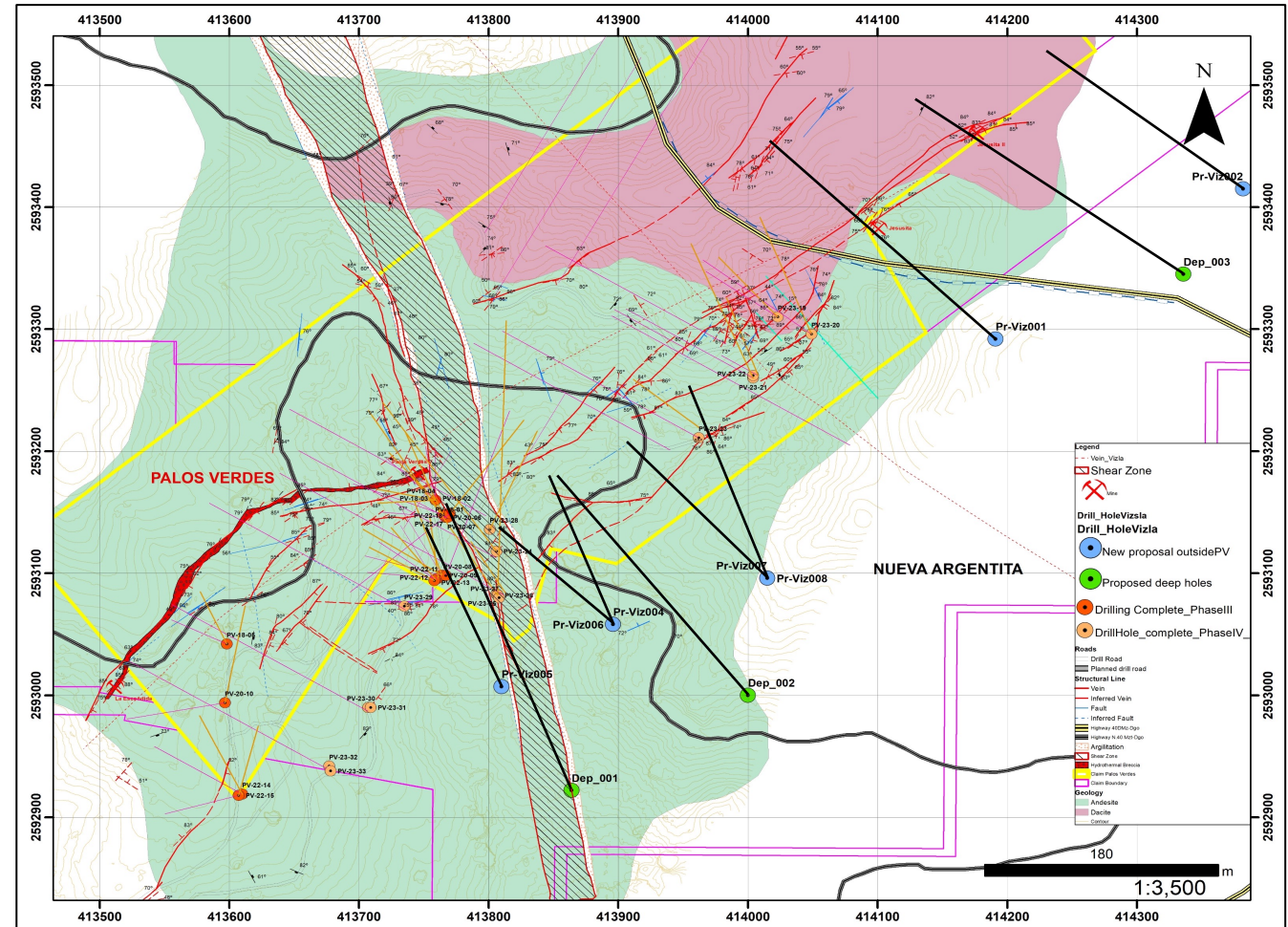
# Exploration Plan 2024

- Joint Prismo and Vizsla Technical Committee (Gibson, Velador, Megaw) recommended an expanded program of deeper drilling
- Collar holes on Vizsla concessions to get proper angle
- Planned 3,000 meters in staged program



3D view of the subsurface looking westerly, with veins in the southwestern Palos Verdes claim and planned holes

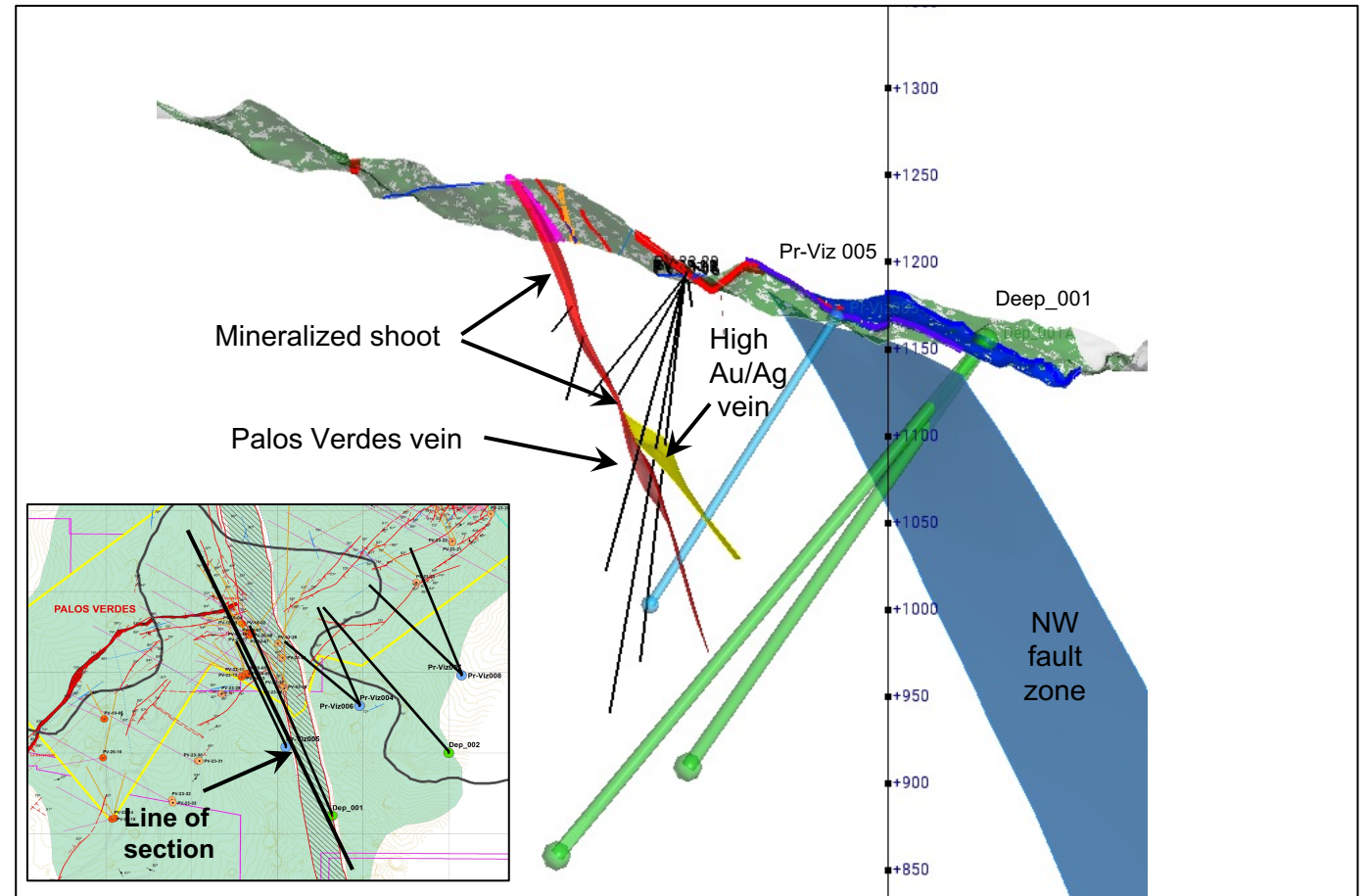
Map and 3D view of subsurface showing planned deep drill holes in blue and green.



### Drilling to Southwest of Shear Zone

- Cross section showing proposed drilling underneath mineralized shoot defined by drilling to date
- Planned to cut the high Au/Ag vein as well as the Palos Verdes vein at least 50m underneath past drilling
- 50- and 100-meter offsets could significantly expand the mineralization in this area
- Will test main Palos Verdes vein as well as high Au/Ag vein with highest grades to data
- Priority holes from sites Pr-Viz 005

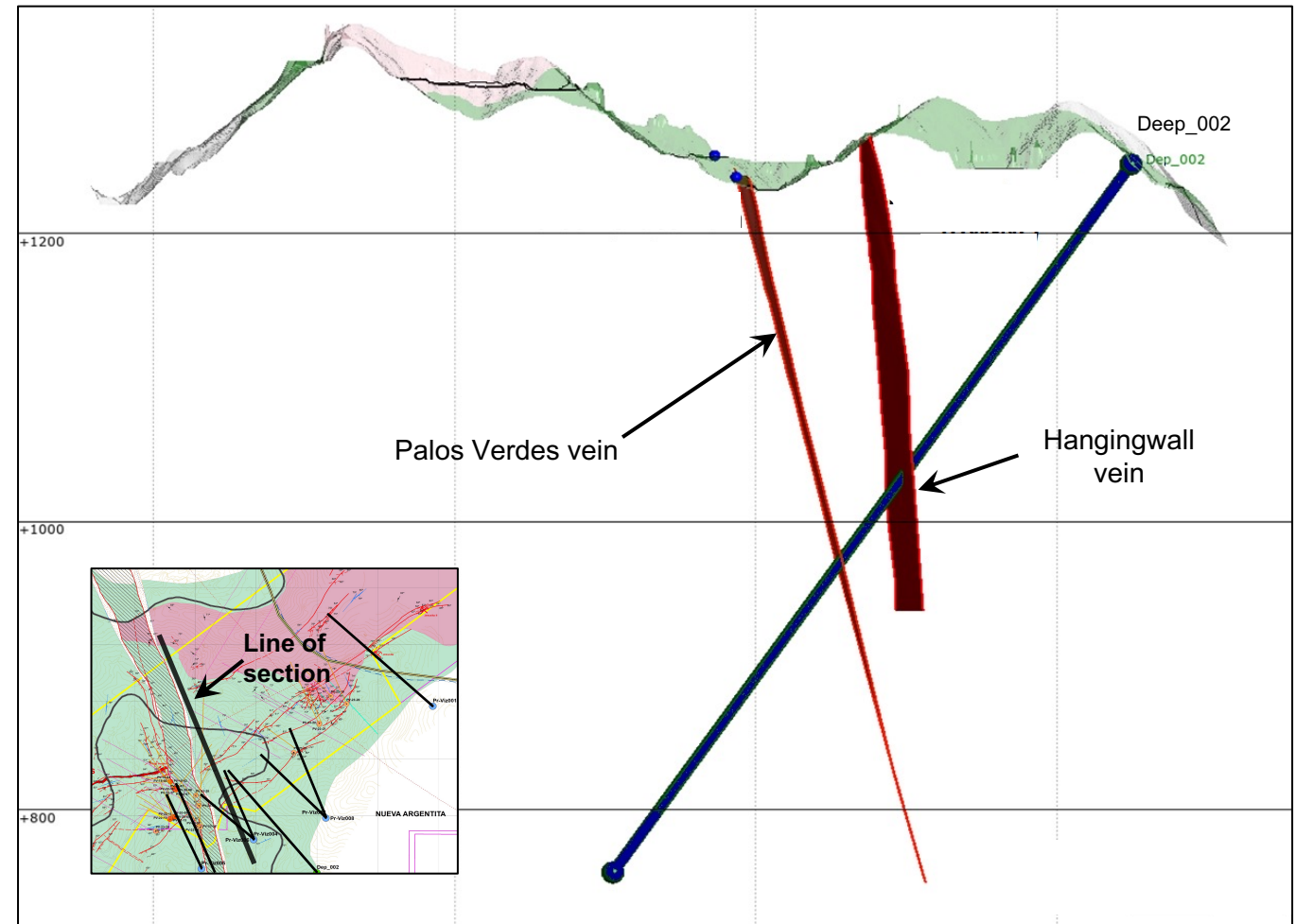
Cross section through mineralized shoot southwest of the NW fault zone



### Drilling to Northeast of Shear Zone

- Cross section showing proposed drill hole to northeast of the NW shear zone that offsets the Palos Verdes vein
- Planned to cut the Palos Verdes vein and hangingwall splits at significant depths where they have only been tested at very shallow depths
- Geologic mapping and alteration studies indicate that the mineralized shoot may have been displaced downward in this area
- Second priority, site Deep\_002 and Pr-Viz 004

Cross section northeast of the NW fault zone



### Drilling the Palos Verdes vein

- 725 meters in priority holes to test mineralized body at depth
- 750 meters to test for extension of mineralized body to NE of NW shear
- 750 meters along strike to NE
- 400 meters near the Jesusita mine at NE limit of concession
- Follow up holes in each area depending on results

Hole_ID	Easting	Northing	Elev	Azimuth	Inclination	Depth	Priority	Target
<b>Target below mineralized shoot, SW of NW shear</b>								
Pr-Viz005A	413,809	2,593,015	1,153	340	-60	275	1	Test under mineralized body
Pr-Viz005B	413,809	2,593,015	1,153	340	-65	325	1	Alt to deep_001A
deep_001A	413,864	2,592,922	1,173	340	-55	450	1	Test under mineralized body
<b>NE of fault</b>								
Pr-Viz004	413,924	2,593,065	1,248	320	-50	350	1	Test to NE of shear
Pr-Viz004A	413,924	2,593,065	1,248	320	-65	400	1	Alternate of site Deep_002
deep_002	414,005	2,593,043	1,306	320	-60	600	1	Test at depth to NE of shear
Pr-Viz004B	413,924	2,593,065	1,248	0	-60	400	2	Alternate of site Pr-Viz007
Pr-Viz007	414,016	2,593,132	1,275	320	-60	350	2	Test along strike
<b>Jesusita</b>								
X1-V2A	414,263	2,593,248	1,366	290	-45	400	3	Jesusita SW
X1-V2	414,263	2,593,248	1,315	310	-45	350	4	Jesusita
PV-3	414,382	2,593,415	1,362	310	-45	300	4	NE limit of concession
						Ore shoot SW of fault	725	
						Test NE of fault	750	
						Further NE	750	
						Jesusita	400	
						<b>Total</b>	<b>2625</b>	

Table of planned drill holes