



CSE: PRIZ
OTCQB: PMOMF
FSE: 7KU

Silver and Copper in Arizona & Mexico

亚利桑那州与墨西哥的 银、铜项目

Q3 - 2025
2025年第三季度

www.prismometals.com

Non-Reliance

This presentation does not provide full disclosure of all material facts relating to Prismo Metals Inc., or its securities, and is not subject to liability for misrepresentations under applicable securities legislation.

This presentation is property of Prismo Metals Inc. (the "Company", "Prismo", "us" or "we") and is strictly confidential. It cannot be circulated or forwarded without our consent. Any graphs, tables or other information demonstrating our historical performance or that of any other entity contained in this presentation are intended only to illustrate past performance and are not necessarily indicative of our or such entities' future performance. The information contained in this presentation is accurate only as of the date of this presentation or the date indicated. No securities regulatory authority has expressed an opinion about the securities described herein and it is an offence to claim otherwise.

Cautionary Note Regarding Forward-Looking Information

This presentation contains "forward-looking information" and "forward-looking statements" (collectively, "forward-looking information") within the meaning of applicable securities laws. Forward-looking information may relate to our future financial outlook and anticipated events or results and may include information regarding our financial position, business strategy, growth strategies, addressable markets, budgets, operations, expected future – including exploration expectations as stated herein, plans and objectives. In some cases, forward-looking information can be identified by the use of forward looking terminology such as "plans", "targets", "expects" or "does not expect", "is expected", "an opportunity exists", "budget", "scheduled", "estimates", "outlook", "forecasts", "projection", "prospects", "strategy", "intends", "anticipates", "does not anticipate", "believes", or variations of such words and phrases or statements that certain actions, events or results "may", "could", "would", "might", "will", "will be taken", "occur" or "be achieved". In addition, any statements that refer to expectations, intentions, projections or other characterizations of future events or circumstances contain forward-looking information. Statements containing forward-looking information are not historical facts but instead represent management's expectations, estimates and projections regarding future events or circumstances. This forward-looking information and other forward-looking information are based on our opinions, estimates and assumptions in light of our experience and perception of historical trends, current conditions and expected future developments.

as well as other factors that we currently believe are appropriate and reasonable in the circumstances. Despite a careful process to prepare and review the forward-looking information, there can be no assurance that the underlying opinions, estimates and assumptions will prove to be correct. Certain assumptions in respect of our ability to execute our business plan; our ability to retain key personnel; our ability to finance our overheads and exploration plans; our ability to obtain and maintain financing on acceptable terms; currency exchange and interest rates; the changes and trends in our industry or the global economy; and the changes in laws, rules, regulations, and global standards are material factors made in preparing forward-looking information and management's expectations.

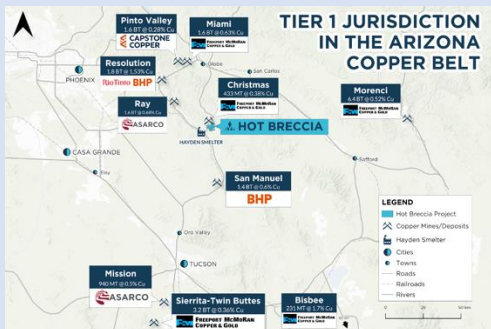
When relying on forward-looking statements to make decisions, we caution readers not to place undue reliance on these statements, as forward-looking statements involve significant risks and uncertainties and should not be read as guarantees of future performance or results and will not necessarily be accurate indications of whether or not the times at or by which such performance or results will be achieved. A number of factors could cause actual results to differ, possibly materially, from the results discussed in the forward-looking statements. With respect to the forward-looking statements contained in this presentation, assumptions have been made regarding, among other things: current and future commodity prices; future global economic and financial conditions; demand for commodities and related products, and the supply of commodities; the accuracy and veracity of information and projections sourced from third parties respecting, among other things, future industry conditions and demand for commodities; and, where applicable, each of those assumptions set forth in the footnotes provided herein in respect of particular forward-looking statements.

All of the forward-looking information contained in this presentation is expressly qualified by the foregoing cautionary statements. These statements speak only as of the date of this presentation. Except as may be required by law, the Company expressly disclaims any intention or obligation to revise or up-date any forward-looking statements or information whether as a result of new information, future events or otherwise.

As required by NI 43-101, Prismo hereby confirms that references to technical information about adjacent or nearby properties does not mean nor does it imply that Prismo will obtain similar information from its own properties.

Hot Breccia

Large Cu Prospect in Arizona
亚利桑那州大型铜矿远景靶区



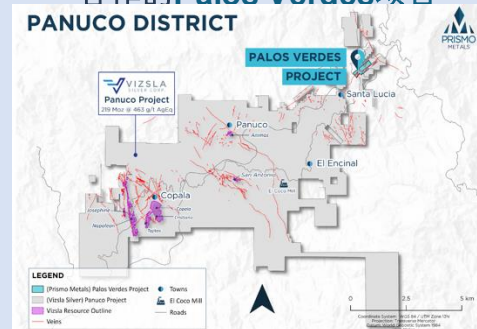
- Located in the heart of the Arizona copper belt / 位于亚利桑那铜矿带核心区域
- Optioned 75% interest in January 2023 / 2023年1月获75%项目期权权益
- Fully permitted / 已获全面勘探许可

Silver King & Ripsey Silver & antimony in Arizona 亚利桑那州银与锑多金属项目



- Historic high-grade silver, copper and base metals producer with antimony potential / 历史上曾为高品位银、铜及基本金属生产矿山，具备锑矿潜力

Palos Verdes Partnership with Vizsla Silver (TSXV: VZLA) 与Vizsla Silver (TSXV: VZLA) 合作的Palos Verdes项目



- Vizsla / Prismo technical committee focused on district scale potential: Dr. Peter Megaw (Prismo); Dr. Jesus Velador (Vizsla); & Dr. Craig Gibson (Prismo) / 聚焦区域规模潜力的技术委员会，成员包括Peter Megaw博士（Prismo）、Jesus Velador博士（Vizsla）和Craig Gibson博士（Prismo）。
- Drilling highlights at Palos Verdes: 102g/t Au, 3,100g/t Ag (11,520g/t AgEq) over 0.5m / 钻探亮点：0.5米范围内金102克/吨，银3100克/吨（银当量11,520克/吨）

About Us / 关于我们



CSE: PRIZ
OTCQB: PMOMF
FSE: 7KU

Successful Explorers

成功的勘探者



Gord Aldcorn
President
总裁



Dr. Craig Gibson
Co-Founder & Chief
Exploration Officer
联合创始人兼首席勘探官



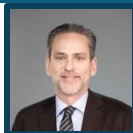
Steve Robertson
Advisor
顾问



Dr. Peter Megaw
Advisor & Significant
Shareholder
顾问、大股东

Capital Markets

资本市场专家



Alain Lambert
CEO
首席执行官



Carmelo Marrelli
CFO
首席财务官



Louis Doyle
Director
董事

INVESTMENT HIGHLIGHTS 投资亮点

- Right balance between: / 二者之间完美平衡:
 - ◆ **Successful explorers / 成功的勘探者**
 - ◆ **Capital markets expertise / 资本市场专家**
- Right **people, right projects, right timing** / 天时地利人和
- Focused on silver, copper and antimony / 聚焦优势矿产: 白银、铜与锑
- Share structure: **only 83.6 million shares** / 精简股本结构: 仅发行**8360**万股
- Low valuation: Market cap: **\$8.5 million** (September 3, 2025) / 低估值优势: **\$850万** (截至2025年9月3日)
- Strong insider ownership: **28.7% ownership by insiders, founders & advisors** / 内部强力控股: 内部人士、创始人及顾问持股**28.7%**
- Vizsla Silver (TSXV: VZLA) largest shareholder:
 - ◆ **6.1% ownership / 战略股东支持: Vizsla Silver (TSXV: VZLA) 作为最大股东持股6.1%**

Location / 地理位置

Two precious metal properties in the Arizona Copper Belt in same region as Prismo's Hot Breccia copper project / 位于亚利桑那铜矿带的两处贵金属资产，与Prismo的Hot Breccia铜矿项目同属一个区域

Silver King mine / Silver King矿

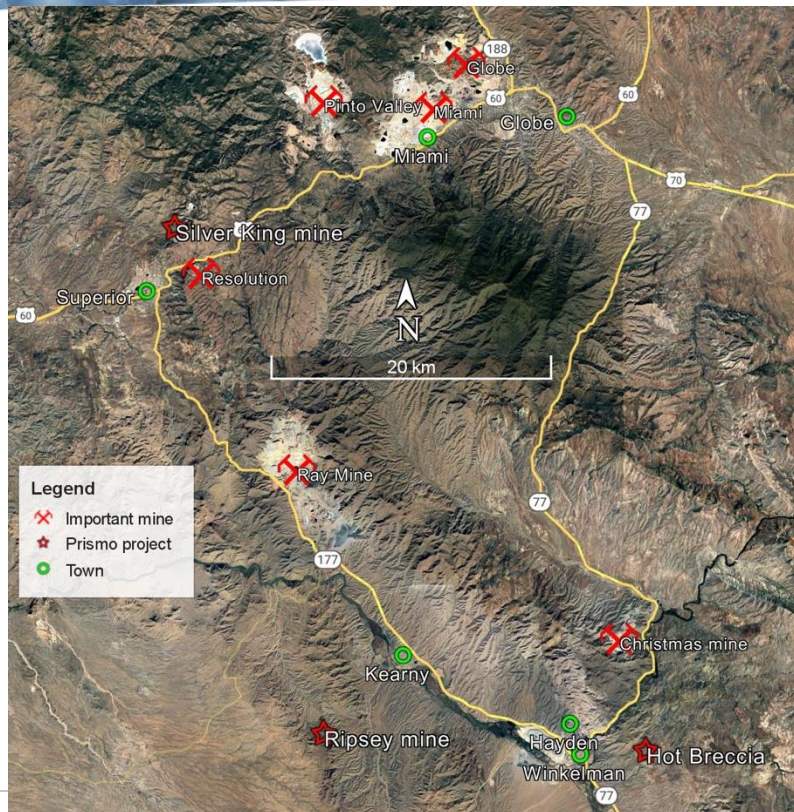
- Historic high-grade silver, copper and base metals producer with antimony potential / 历史上曾为高品位银、铜及基本金属生产矿山，具备锑矿潜力
- Located near Superior, AZ and 3 km from the main Resolution Copper shaft / 坐落于亚利桑那州苏必利尔镇附近，距Resolution Copper主矿井仅3公里
- Resolution Copper: / Resolution Copper项目
 - BHP and Rio Tinto joint venture / 必和必拓（BHP）与力拓（Rio Tinto）合资开发
 - Largest unmined copper deposit in the world / 全球最大的未开发铜矿床
- Silver King is a unique land position within a large claim block controlled by Resolution Copper / Silver King处在Resolution Copper控制的大型矿权地块内的独特战略位置上

Ripsey Mine / Ripsey矿

- Historic gold-silver-copper producer / 历史上的金-银-铜生产矿山
- Located 22 km W from Prismo's Hot Breccia copper project / 位于Prismo的Hot Breccia铜矿项目以西22公里处

Proposed deal / 交易方案

- Option to acquire 100% of the two projects / 获得两个项目100%权益的期权协议



High-Grade Silver / 高品位银矿

Silver King

- Discovered in 1875, became one of the most important mines in Arizona / 1875年发现，曾经是亚利桑那州最重要的矿山之一
- Discovery outcrops were described as very high grade, with near surface production in one area measuring 10,000 ounces per ton silver / 发现时的露头被描述为极高品位，其中一处近地表区域白银产量达每吨10,000盎司
- Produced high grade silver in two main periods: / 生产高品位白银的两个主要阶段：
 - 1875-89, nearly 6 million ounces of silver at average head grades of 61oz/ton to 21 oz/ton silver with significant copper, lead and zinc values / 1875-1889年间生产近600万盎司白银，平均原矿品位61至21盎司/吨，并含显著铜、铅、锌价值
 - 1918-28, produced over 230,999 oz silver with a head grade of 18.7 oz/ton / 1918-1928年间生产了超过230,999盎司白银，原矿品位18.7盎司/吨
- No significant production after 1928 / 1928年后无重大生产活动
- No recent modern exploration / 近期未进行过现代勘探
- Unique land position within a large claim block controlled by Resolution Copper / 位于Resolution Copper控制的大型矿权地块内的独特战略位置



Silver King mine in 1880's:
Upper photo shows the mine and mill, lower photo shows Ore wagons leaving the mine for processing at nearby Pinal City.
1880年代的Silver King矿：
上图显示矿山与选矿厂，下图呈现矿石车队离开矿山前往附近皮纳尔城加工的场景。



Project Map / 项目区位图

Silver King / Silver King项目

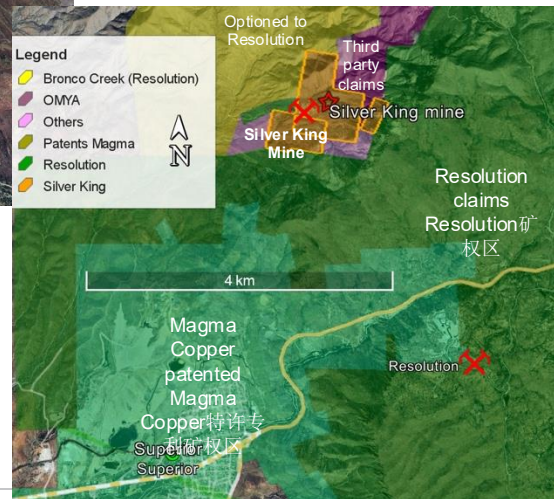
- 125 hectares about 3 km from the main Resolution Copper shaft / 占地面积125公顷，距Resolution Copper主矿井约3公里
 - 10 claims plus two patented claims / 包含10个矿权区及2个特许专利矿权
- Claim block within the large land position of Resolution Copper / 矿权区块位于Resolution Copper大型地块范围内
- Two shafts accessed the deposit that was mined on nine levels to a depth of only 300 meters below the surface / 矿床通过两个竖井开采，地下9个中段深度仅达300米
- The main shaft was dewatered and rehabilitated with a modern headframe and hoist in the late 1990's to provide access to the uppermost levels for small scale production / 主竖井于1990年代末完成排水改造，配备现代化井架和提升系统，用于浅层小规模生产
- Limited widely spaced shallow drilling was completed by Magma copper in the 1970's but the deposit has never been explored systematically with modern techniques
- 1970年代Magma铜业公司完成有限浅层钻探，但未采用现代技术进行系统性勘探



View of the Silver King mine looking southeast with the Resolution installations in the background and the town of Superior on the right. The land position at the project is indicated with claims in orange color and patented ground in blue and pink.

东南视角Silver King矿全景：背景为Resolution厂区，右侧为苏必利尔镇。橙色标注矿权区范围，蓝粉色为特许专利地块。

Aerial view of the Silver King mine area with approximate land boundaries. The Silver King acquisition including the two patented claims is shown in orange. 航空俯视图显示Silver King矿区大致边界，橙色区域为本次收购范围（含两处特许专利矿权）。



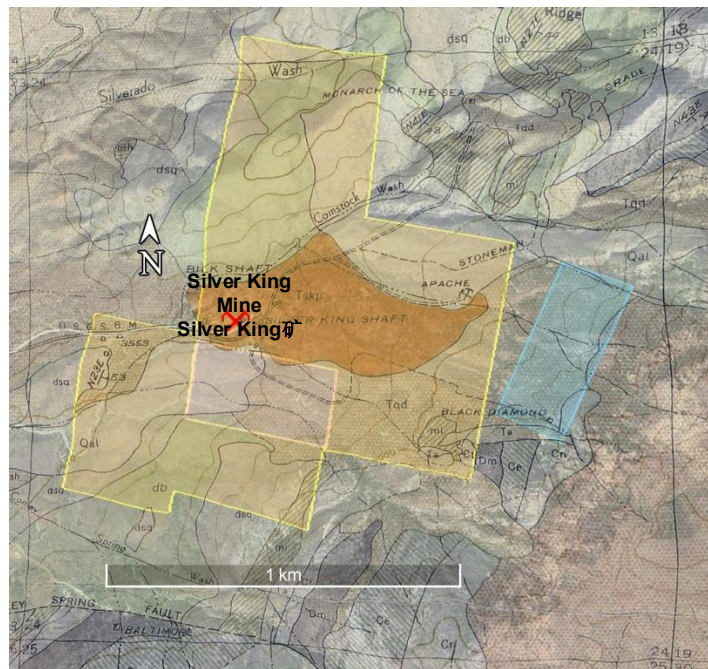
Silver King / Silver King项目

- The mineralization at Silver King is described as a stockwork and breccia that forms an irregular cylindrical body plunging steeply to the west / Silver King的矿化被描述为网状脉与角砾岩系统，形成向西陡倾的不规则筒状矿体
- The mineralization is hosted by a quartz diorite porphyry intrusion into Precambrian and Paleozoic rocks / 矿化赋存于侵入前寒武系与古生代岩石的石英闪长玢岩中
- The high-grade mineralization was mined at the surface and areas of lower grade can be sampled in the surrounding rocks / 高品位矿化区曾进行地表开采，周边岩石中可采集到低品位样本
- The deposit has never been explored systematically with modern techniques, only limited widely spaced shallow drilling was completed by Magma Copper in the 1970's / 该矿床从未经过现代技术系统勘探，仅由Magma Copper于1970年代完成有限的大间距浅层钻探

Sample 样本	Easting 东坐标	Northing 北坐标	Type 类型	Width m 宽度(米)	Au g/t 金(克/吨)	Ag g/t 银(克/吨)	Cu 铜 %
Surface samples / 地表样本							
13468	491,966	3,687,862	Dump / 废石堆	-	-	49	>1
13469	491,972	3,687,860	Dump / 废石堆	-	-	40.3	0.16
13472	Spoil from crusher 破碎场废料		Grab / 抓取样本	-	-	124	0.07
13484	491,935	3,687,886	Chip/grab 刻线/抓样	1.1	-	15.5	0.11

Assay values from
the Silver King mine

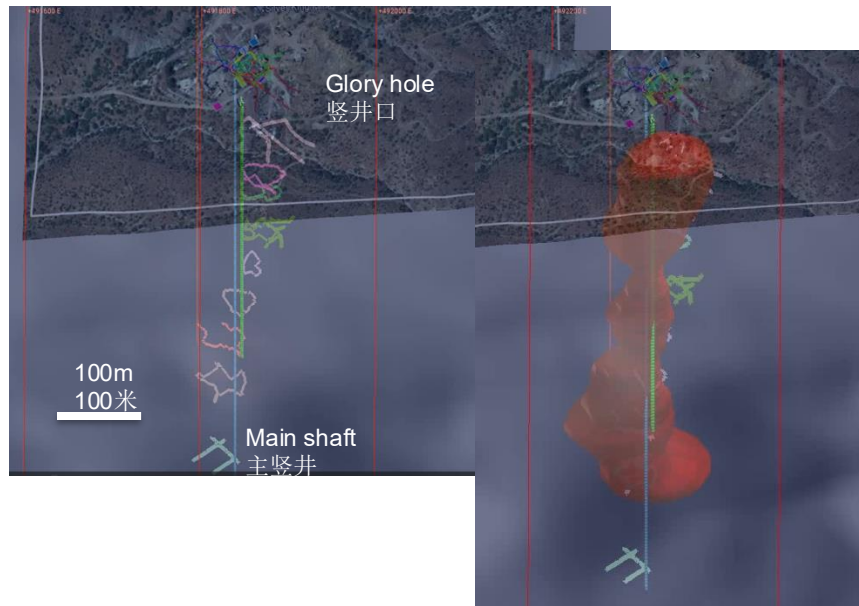
Silver King矿
山化验值



Geologic map of the Silver King mine area showing quartz diorite intrusion (orange) that hosts mineralization. Surrounding rocks are precambrian basement, Paleozoic limestone and Tertiary cover. / Silver King矿区地质图显示：承载矿化的石英闪长玢岩侵入体（橙色），围岩为前寒武系基底、古生代石灰岩及第三系覆盖层。

Silver King / Silver King矿

- The mine produced from 9 levels over about 300 vertical meters / 该矿在约300米垂直深度范围内分9个中段进行开采
- The mineralization is described a stockwork and breccia that forms an irregular cylindrical body plunging steeply to the west hosted by a quartz diorite porphyry / 矿化被描述为网状脉与角砾岩系统，形成向西陡倾的不规则筒状矿体，赋存于石英闪长玢岩中
- Mineralization near the surface was extremely rich with silver in the 20-30% range with abundant native silver and was mined as a pit or glory hole / 近地表矿化极其富集，银品位达20-30%，含大量天然银，采用露天坑或漏斗式开采
- Mining below the pit used the square set stoping method and it is believed that significant mineralized material was used as backfill and remains in the stopes / 坑下采矿采用方框支架法，据信大量矿化材料被用作回填料仍留存于采场。
- Historic descriptions indicate that a portion of the body from about 60-100 meters below the surface were not extensively mined / 历史记录显示地表以下60-100米区间的部分矿体未进行大规模开采。
- The deposit has never been explored systematically with modern techniques; only six widely spaced shallow rotary drill holes were completed by Magma Copper in the 1970's / 该矿床从未经过现代技术系统勘探，仅由Magma Copper于1970年代完成6个大间距浅层旋转钻孔



Silver King mine model showing levels on the left with the interpreted shape of the pipe-like mineralized body on the right.

左图显示开采中段布局，右图为筒状矿化体解释形态标注

Mineralization / 矿化特征

Silver King / Silver King矿

- Historic reports described the mineralization at Silver King / 历史报告中描述了Silver King的矿化特征
- High-grade oxidized mineralization was mined at the surface and contained abundant native silver and chlorargyrite (silver chloride) with silver content measured in percents / 地表开采的高品位氧化矿带含大量天然银和角银矿（氯化银），银含量以百分比计
- Below the oxidized zone the minerals of importance include stromeyerite (silver copper sulfide), Ag-bearing tetrahedrite (freibergite - a silver copper antimony sulfide), acanthite, and native silver along with galena and sphalerite / 氧化带下方重要矿物包括：硫铜银矿（硫化铜银）、含银黝铜矿（银锑硫化铜）、深红银矿、天然银、伴生方铅矿与闪锌矿
- The mineralization is zoned from tetrahedrite and stromeyerite in upper levels to acanthite and stromeyerite at depth.
- 矿化具分带性，上部以黝铜矿-硫铜银矿为主，深部过渡为深红银矿-硫铜银矿组合



Photos taken during small scale production undertaken by the Deen family in the late 1990's. / 1990年代末Deen家族小规模生产期间拍摄的照片

Silver King / Silver King 矿

- The presence of freibergite (AgCuSbS) (silver, copper, antimony sulphide) indicates that antimony could be important especially in the more accessible upper levels of the mine / 含银黝铜矿 (AgCuSbS , 银铜锑硫化物) 的存在表明锑可能具有重要价值, 尤其在矿山更易开采的上部中段。
- Samples taken during small scale production in 2000 show that high grade mineralization remains and samples were taken with as much as 644 oz/t Ag (or 18,250 g/t Ag) and 0.53 oz/t Au (15 g/t) Au / 2000年小规模生产期间采集的样本显示, 高品位矿化依然存在, 最高含银量达644盎司/吨 (18,250克/吨)、最高含金量达0.53盎司/吨 (15克/吨)

Assay values from the 114' level of the Silver King from small scale production in the late 1990s to 2000

1990年代末至2000年 Silver King 矿 114中段 小规模生产化验值

Sample 样本编号	Easting 东坐标	Northing 北坐标	Type 类型	Au oz/t 金(盎司/ 吨)	Ag oz/t 银(盎司/ 吨)
181	114 level / 114中段		Selected 选择性采样	0.12	401
199	114 level / 114中段		Selected 选择性采样	0.26	430
255	114 level mill run / 114中段 选厂		Selected 选择性采样	0.53	644



Photos taken during small scale production undertaken by the Deen family in the late 1990's. 1990年代末Deen家族小规模生产期间拍摄的照片

Exploration Plan / 勘探计划

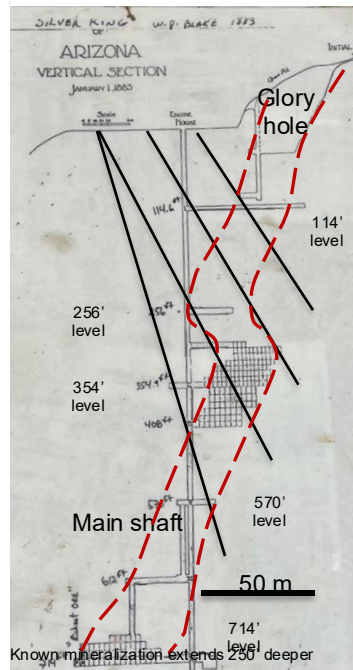
Silver King Phase I Exploration Plan / Silver King 第一阶段勘探方案

- 1,000 meters of diamond or RC drilling to test the main pipelike body at 4 elevations, as well as lateral to the body / 实施1000米金刚石钻或反循环钻探，在4个不同标高测试筒状主矿体及其侧向延伸
- Dewater the shaft to the 256 level that was rehabilitated in the late 1990's to obtain a bulk sample for metallurgical testing / 对1990年代末改造过的256中段主竖井进行排水作业，获取冶金试验大样
- Mapping and sampling of other nearby mineral occurrences on the land package referenced in historic reports, such as the Black Diamond breccia reported to be similar to the Silver King body at the surface but never fully explored / 对矿权地块内历史记载的其他邻近矿点（如Black Diamond角砾岩体）开展测绘与采样——该岩体地表特征与Silver King矿体相似但未经过全面勘探



Drone view of the Silver King mine looking easterly.

无人机东视角Silver King矿区全景

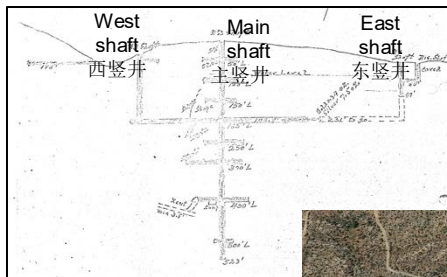


Cross section through the Silver King mine workings showing proposed drill holes to test the pipelike mineralized body in red / 矿区剖面图：红色标注测试筒状矿化体的拟施工钻孔

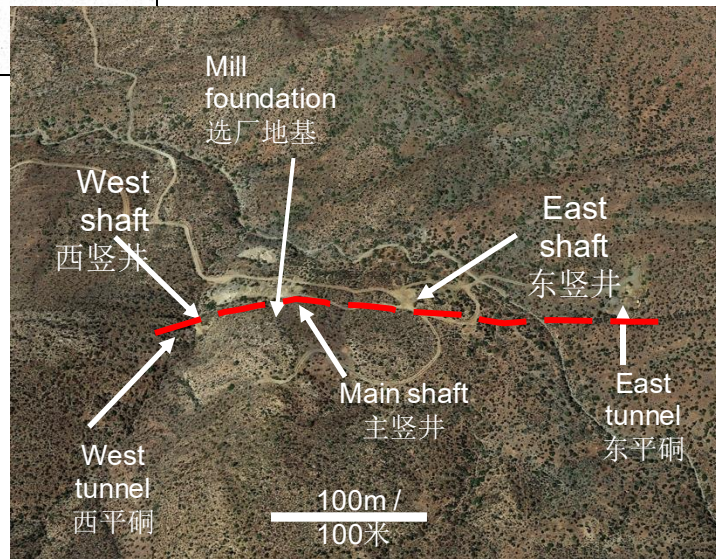
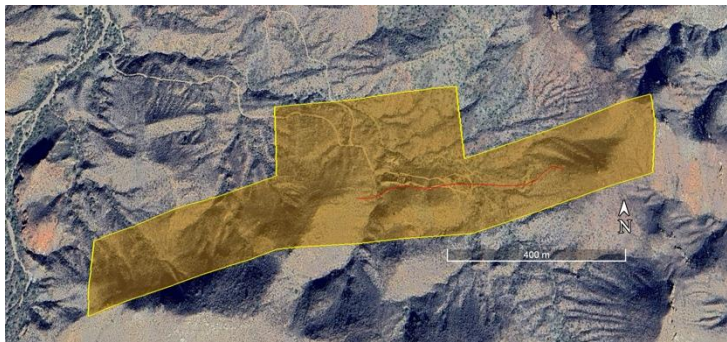
Project Map / 项目区位图

Four patented claims and two patented mill sites / 包含4个特许专利矿权及2个特许选厂场地

- Located about 20 km south of the Ray mine and 20 km west of Prismo's Hot Breccia copper project / 位于Ray矿以南约20公里，Prismo的Hot Breccia铜矿项目以西20公里
- Road accessible, easy access / 有现成的公路可抵达，交通便利
- Historic gold-copper-silver producer with antimony potential / 历史上为金-铜-银生产矿山，具备锑矿潜力
- 30 hectares of patented claims staked over a nearly east-west vein with mine workings over about 500 meters along strike and 160 meters depth / 30公顷特许矿权区覆盖近东西走向矿脉，沿走向500米、垂深160米范围内存在采掘活动
- No modern exploration / 未进行现代勘探



Longitudinal section showing working along the central portion of the Ripsey vein / 沿Ripsey矿脉中部采掘活动的纵剖面图



Ripsey Mine / Ripsey 矿

- Nearly east-west, south dipping structure / 近东西走向、向南倾斜的构造
- Mine workings have traced the vein for about 400 meters along strike and 160 meters depth / 采掘活动沿矿脉走向追踪约400米，垂深160米
- Sampling has yielded high grade gold, silver and base metals
- 采样结果显示高品位金、银及基本金属

Sample 样本号	Easting 东坐标	Northing 北坐标	Type 类型	Width m 宽度(米)	Au g/t 金(克/吨)	Ag g/t 银(克/吨)	Cu 铜%	Pb 铅%	Zn 锌%
13473	in east tunnel / 东平洞内		Chip / 碎屑	1	8.68	181	3.0	0.4	9.4
13474	in east tunnel / 东平洞内		Chip / 碎屑	0.3	3.21	210	6.2	0.5	0.6
13475	502,566	3,651,692	Dump / 废料	dump 废料	1.52	12	0.9	0.1	0.4
13476	in west shaft / 西竖井内		Chip / 碎屑	0.35	8.65	276	0.1	0.8	0.0
13477	502,276	3,651,704	Dump / 废料	dump 废料	1.00	47	0.2	0.1	0.1
13478	502,259	3,651,745	Tailings 尾矿	tailings 尾矿	1.00	34	0.1	0.1	0.2
13485	in east tunnel / 东平洞内		Chip / 碎屑	1.2	0.80	17	0.4	0.2	3.5
13486	502,622	3,651,741	Dump / 废料	dump / 废料	1.84	43	0.6	0.1	2.2
13487	502,287	3,651,690	Chip / 碎屑	0.75	15.85	275	0.0	0.3	0.0
13488	502,216	3,651,650	Chip / 碎屑	1.25	0.41	14	0.0	0.1	0.0
13489	in west tunnel / 西平洞内		Chip / 碎屑	0.6	0.11	1	0.0	0.0	0.0



View open stope on the Ripsey vein near the main shaft
主竖井附近Ripsey矿脉露天采场视图



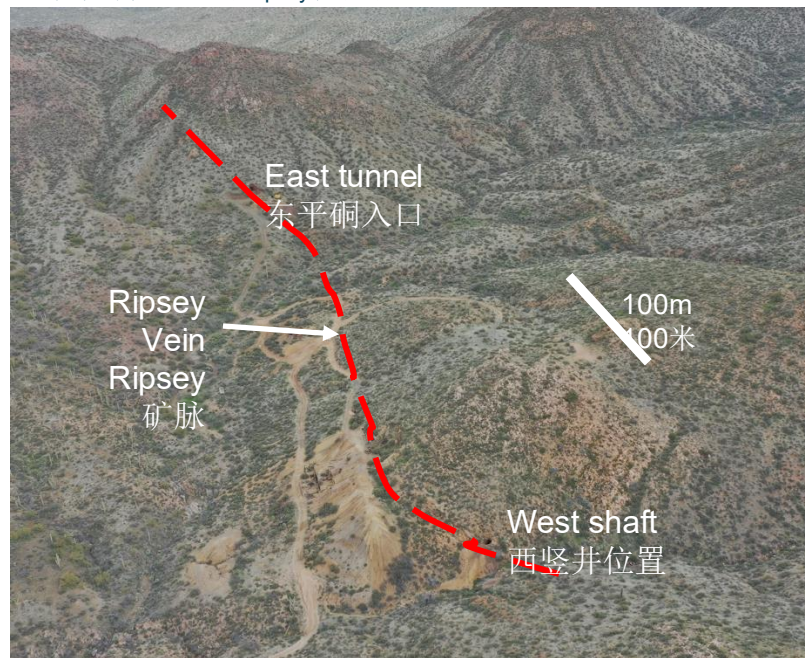
View of Ripsey vein at the West Shaft, looking easterly
西竖井处东视角Ripsey矿脉形态

Two stage exploration program / 两阶段勘探计划

- No modern exploration has been conducted / 该区域未进行过现代勘探
- Detailed mapping and sampling of the Ripsey vein / 对Ripsey矿脉开展详细测绘与采样
 - In and around historic workings / 覆盖历史采掘区内外范围
 - Along strike / 沿矿脉走向延伸追踪
 - Area prospecting / 区域普查找矿
- Initial drill program / 初步钻探计划
 - Test the vein at depth / 测试矿脉深部延伸
 - Determine width of mineralized zone / 确定矿化带宽度



Drone image of the Ripsey mine looking easterly showing trace of the Ripsey vein
无人机东视角航拍：显示Ripsey矿脉走向轨迹



Investment Highlights / 投资亮点



Strategic Acquisition in a World-Class Mining District / 世界级矿区内的战略收购

- **Prime Location:** Located in Arizona's prolific Copper Belt, near Resolution Copper (BHP/Rio Tinto JV), the world's largest unmined copper deposit. / **黄金区位:** 位于亚利桑那州富铜矿带, 毗邻全球最大未开发铜矿 Resolution Copper (必和必拓/力拓合资项目)
- **Unique Land Position:** Silver King is strategically positioned within a large claim block controlled by Resolution Copper, enhancing its value and potential for partnerships. / **稀缺地块:** Silver King位于 Resolution Copper 控制的大型矿权区内, 战略位置提升其价值与合作潜力

High-Grade, Underexplored Assets / 高品位、勘探程度低的资产

- **Silver King:** Historic production of ~6M oz silver at grades up to 61 oz/ton, with recent samples showing 644 oz/ton Ag and 0.53 oz/ton Au. No modern exploration conducted. / **历史产量**约600万盎司白银, 品位高达61盎司/吨, 近期采样结果显示**644盎司/吨银**、**0.53盎司/吨金**, 未进行现代勘探
- **Ripsey Mine:** High-grade gold (up to 15.85 g/t Au), silver (up to 276 g/t Ag), and copper from historic workings, with no modern drilling
Ripsey矿: 历史采区见高品位金(15.85克/吨)、银(276克/吨)及铜, 未实施现代钻探。

Significant Upside Potential / 重大上升潜力

- **Untapped Resources:** Both projects have seen minimal modern exploration, offering opportunities for resource expansion using advanced techniques. / **未开发资源:** 两个项目均未经过系统现代勘探, 采用先进技术具备资源扩张潜力
- **Antimony Potential:** Presence of freibergite at Silver King indicates potential for antimony, a critical mineral with growing demand.
锑矿潜力: Silver King存在的含银黝铜矿预示锑元素潜力——锑作为关键矿产需求持续增长

Clear Exploration Path / 明确的勘探路径

- **Silver King:** Phase I includes 1,000m of drilling and shaft dewatering for bulk sampling, targeting high-grade zones. / **第一阶段**含1000米钻探及竖井排水获取大样, 靶向高品位矿带
- **Ripsey Mine:** Detailed mapping, sampling, and initial drilling to test vein depth and width.

Ripsey矿: 通过详细测绘、采样及初步钻探测试矿脉深度与宽度

In The Heart of the AZ Copper Belt

位于亚利桑那铜矿带腹地



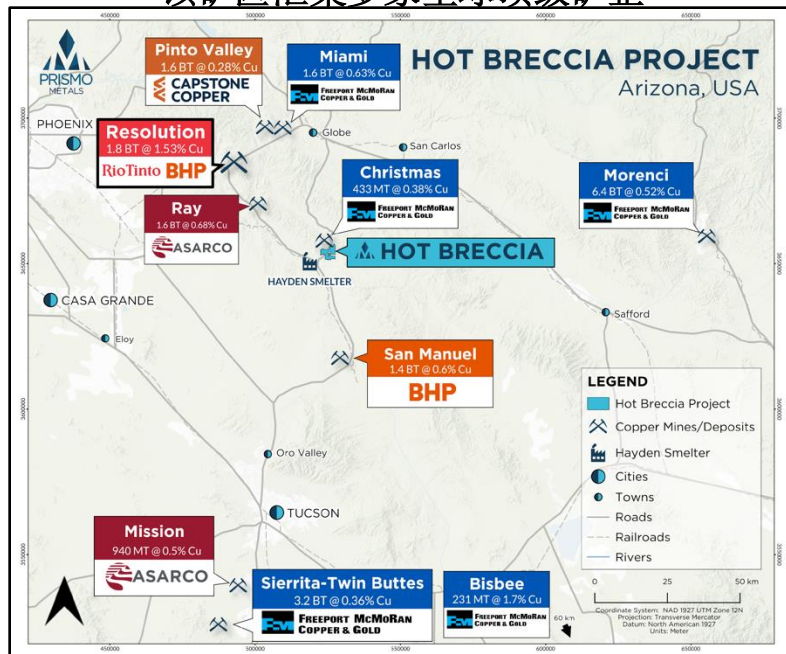
CSE: PRIZ
OTCQB: PMOMF
FSE: 7KU

- **Right address:** in the heart of the Arizona Copper Belt
- **顶级区位优势:** 位于亚利桑那铜矿带核心区域
- **Infrastructure:** highway, water, power lines, Hayden smelter, Asarco concentrator close to property boundary. / **基础设施:** 高速公路、水源、输电线路俱全, Hayden冶炼厂、Asarco选矿厂紧邻矿权边界
- **Fully permitted, driller selected / 已获全部许可, 已选定钻探商**

Copper Deposit 铜矿床	Total Cu Endowment (Blb Cu) 铜资源总量 (十亿磅铜)
Morenci	74.7
Resolution	60.1
Miami	22.0
Ray	21.0
Sierrita-Esperanza	13.2
Pinto Valley	12.6
San Manuel-Kalamazoo	11.8

Most Majors Present in the District

该矿区汇集多家全球顶级矿企

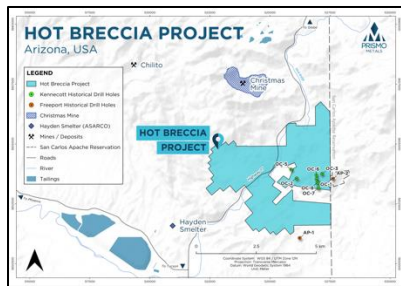


Mineralization Model / 矿化模型

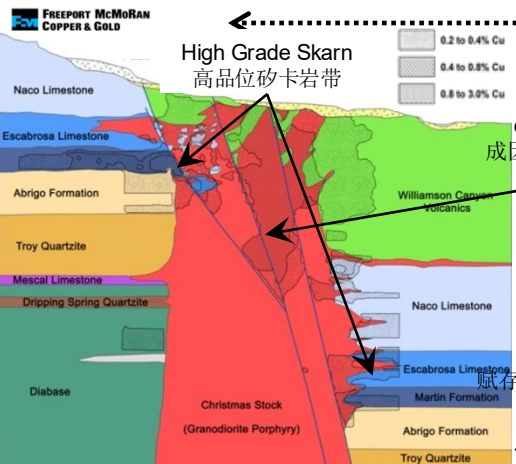
Hot Breccia: High grade mineralization similar to nearby Christmas Mine

Hot Breccia项目：矿化特征与邻近Christmas矿类似的高品位矿床

- High grade skarn mineralization in favorable Paleozoic sedimentary rocks and basement rocks / 高品位砂卡岩矿化，赋存于有利的古生代沉积岩与基底岩系
- Laramide age, multi-phase, causative intrusive bodies / 拉腊米期多期次成因侵入岩体



Christmas Mine

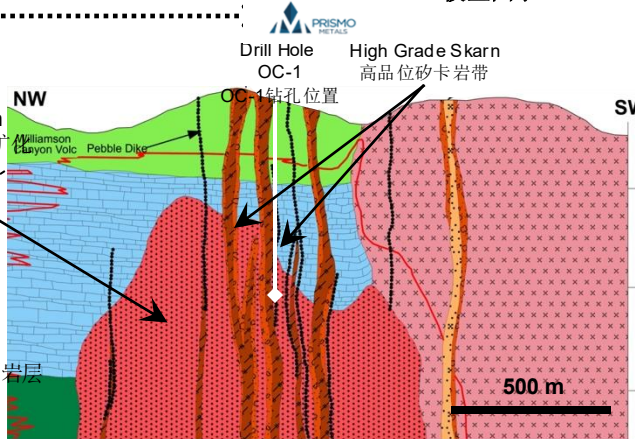


CROSS SECTION THROUGH CHRISTMAS DEPOSIT
Christmas矿床剖面示意图

Reference: Briggs, D.F., 2021, History of the Christmas Mine, Gila County, Arizona. Arizona Geological Survey CR-21-A, 45 p.

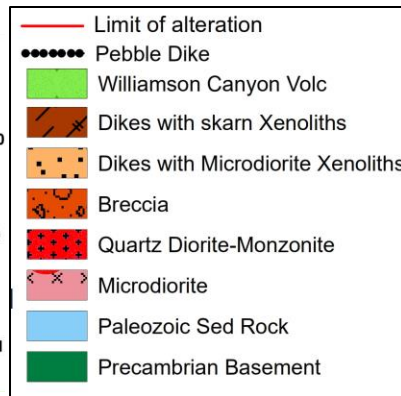
参考文献: Briggs, D.F., 2021, 亚利桑那州吉拉县Christmas矿历史。亚利桑那地质调查局CR-21-A, 45页。

Hot Breccia Model / Hot Breccia模型图示



SCHEMATIC CROSS SECTION THROUGH HOT BRECCIA
Hot Breccia剖面示意图

Reference / 参考文献: Barrett, L., 1974,

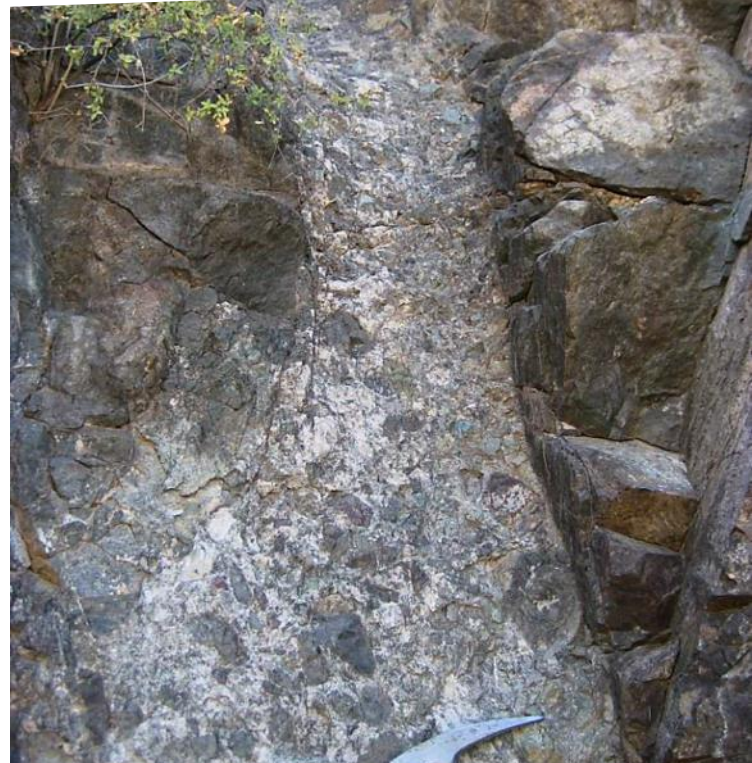


角砾岩：大自然严选的采样方案

- Breccias exposed in the area of past drilling: / 该区域历史钻探揭露的角砾岩特征:
 - Polyolithic breccias, mainly andesite and intrusive fragments, with some fragments of limestone and quartzite brought up from depth. / 多岩性角砾岩，以安山岩和侵入岩碎屑为主，含深部上涌的石灰岩和石英岩碎屑
 - Fragments of high grade mineralized rock / 包含高品位矿化岩碎块
 - Copper and gold assays in the area of the breccia exposures / 角砾岩出露区铜金化验结果



Cu-bearing magnetite skarn in quartz diorite dike
石英闪长玢岩脉中的含铜磁铁矿矽卡岩



Breccia dike or pipe cutting up through volcanic cover
(Courtesy: Walnut Mines LLC)
切穿火山岩盖层的角砾岩脉/岩筒
(图片来源: Walnut Mines LLC)

Historic Drill Holes / 历史钻孔数据

- **Kennecott (subsidiary of Rio Tinto)** and **Conoco** drilled seven holes from 1974 to 1981 and **Phelps Dodge** drilled two holes near the property in the same time frame / **Kennecott (力拓子公司)** 与 **康菲公司** 于1974-1981年间施工7个钻孔, **Phelps Dodge** 同期在矿权区附近施工2个钻孔

- **All drill holes reported: / 所有钻孔均显示:**

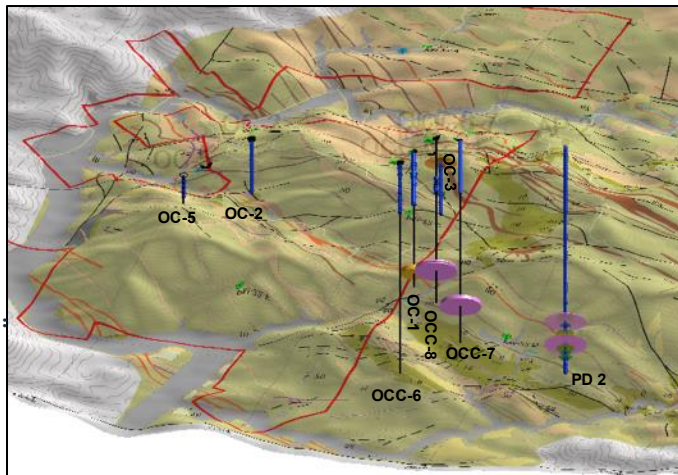
- Hydrothermal alteration within the volcanics, increasing intensity downwards / 火山岩内存在热液蚀变, 向深部强度递增
- Paleozoic carbonate host units **have several copper intercepts reported to exceed 1% + zinc** / 古生代碳酸盐岩赋矿单元见多处铜矿段品位超1%+锌

- **Kennecott reported highlights: / Kennecott重点成果:**

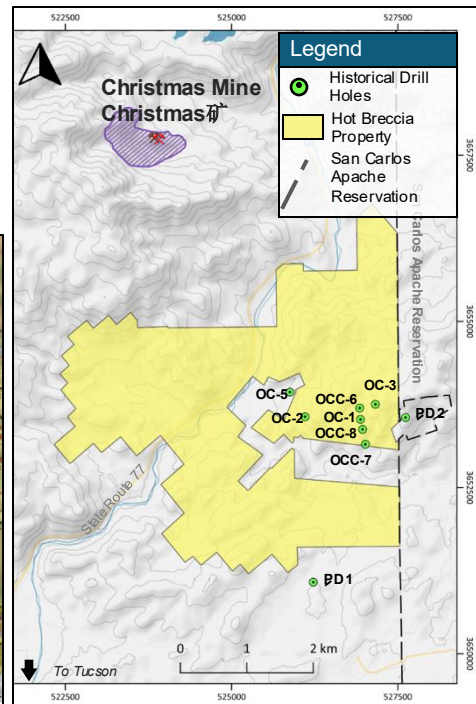
- OC-1: 77' with **0.54% Cu** at 2,100' / 钻孔OC-1: 2100英尺处77英尺段长, **铜品位0.54%**
- OCC-7: 60' with **1.4% Cu, 4.65% Zn** at 2,900' / 钻孔OCC-7: 2900英尺处60英尺段长, **铜品位1.4%, 锌品位4.65%**
- OCC-8: 25' with **1.73% Cu, 0.11% Zn** at 2,305' and 15' with **1.4% Cu, 0.88% Zn** at 2,350' / 钻孔OCC-8: 2305英尺处25英尺段长, **铜品位1.73%, 锌品位0.11%**; 2350英尺处15英尺段长, **铜品位1.4%, 锌品位0.88%**

- **Phelps Dodge drill hole PD 2 reported: / Phelps Dodge PD-2孔报告:**

- **1,270 feet** of variably mineralized skarn with several intercepts **>1% copper** and a high of **3.16% copper**
- **1270英尺**范围内见可变矿化矽卡岩, 多个矿段**铜品位>1%, 最高达3.16%**



View of subsurface looking upward to northeast with drillholes and intercepts shown in text, land boundary shown by red lines
 东北向上视角地下钻孔及截距分布图 (红色界线标示矿权范围)



Surface map showing Hot Breccia claims in yellow and historic drill holes / 地表地图: 黄色标注Hot Breccia矿权区及历史钻孔位置

Looking For The Next Resolution

寻找下一个Resolution级矿床

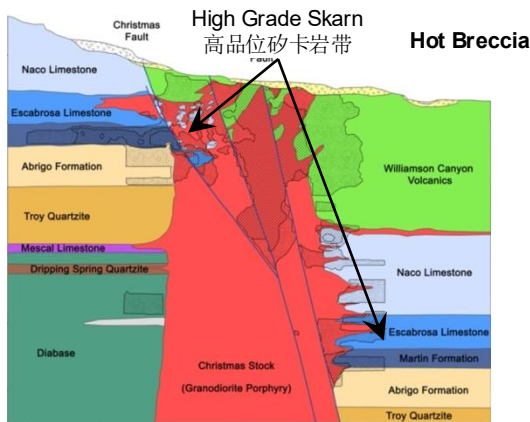


CSE: PRIZ
OTCQB: PMOMF
FSE: 7KU

- **Christmas Mine/Hot Breccia model is reminiscent of Magma Mine/Resolution: / Christmas矿/Hot Breccia模型令人联想到Magma矿/Resolution矿床:**

- Mineralization in block faulted favorable sedimentary and basement rocks that are covered by an andesitic volcanic sequence / 矿化赋存于块断作用的有利沉积岩与基底岩系中，被安山质火山岩序列覆盖
- Multi-phase causative intrusive rocks of Laramide age / 存在拉腊米期多期次成因侵入岩
- High-grade mineralization mined historically nearby / 周边历史上开采过高品位矿化
- One **Difference** is that the Hot Breccia prospective host rocks start 400 m below surface; Resolution deposit starts at 1,200 m below surface
- 唯一**差异**: Hot Breccia远景赋矿岩层起始于地表下400米，而Resolution矿床始于地表下1200米

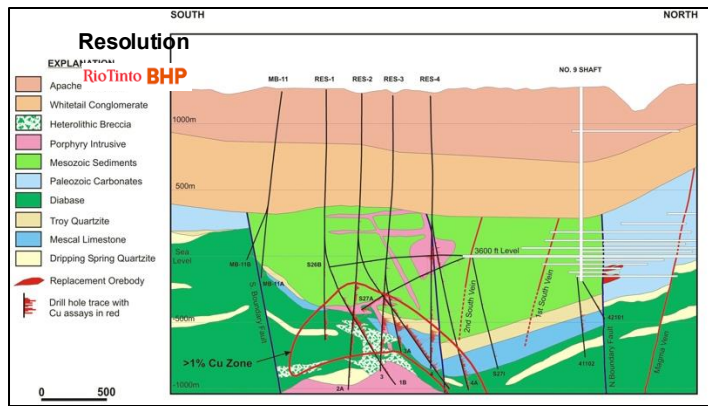
Christmas Mine / Christmas矿



CROSS SECTION THROUGH CHRISTMAS DEPOSIT

Christmas / 矿剖面示意图

Reference: Briggs, D.F., 2021, History of the Christmas Mine, Gila County, Arizona, Arizona Geological Survey CR-21-A, 45 p. / 参考文献: Briggs, D.F., 2021年, 亚利桑那州吉拉县Christmas矿历史. 亚利桑那地质调查局CR-21-A, 45页.



Schematic section of the Resolution deposit, after Ballantyne et al., 2003
Resolution矿床示意剖面 (据Ballantyne等, 2003年绘制)

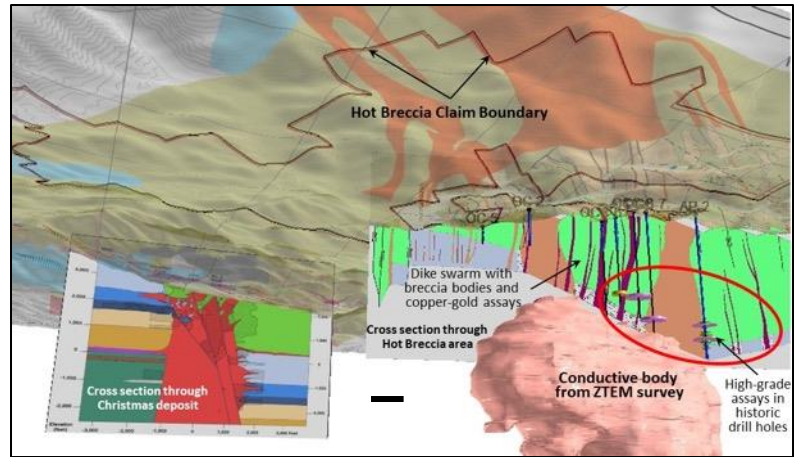
Geophysics Found Large Anomaly

地球物理发现大型异常带



CSE: PRIZ
OTCQB: PMOMF
FSE: 7KU

- A ZTEM survey was completed over the property in 2023 / 2023年已在该矿区完成ZTEM航磁测量
 - Interpretation of the geophysical survey shows a large resistivity low at depth below a dike swarm and the namesake breccia and copper surface mineralization / 地球物理数据解译显示：在岩脉群、同名角砾岩及地表铜矿化下方深部存在大规模低阻异常带
 - Historic drill intercepts with >1% copper intercepts / 历史钻孔见>1%铜品位的矿断
- The geophysical anomaly is on the scale of the footprint of the high-grade Resolution deposit 40km to the northwest / 该地球物理异常带规模与西北40公里外Resolution高品位矿床的分布范围相当
- Based on ZTEM and upcoming drilling results, considering a ground MT survey to further define the conductive body / 基于ZTEM数据及即将获得的钻探结果，计划开展地面MT测量以进一步圈定导矿体
- Prismo has entered into an agreement with ExploreTech to use Artificial Intelligence to refine a drill program to test the anomaly / Prismo已与ExploreTech达成协议，将利用人工智能技术优化钻探方案以验证该异常带

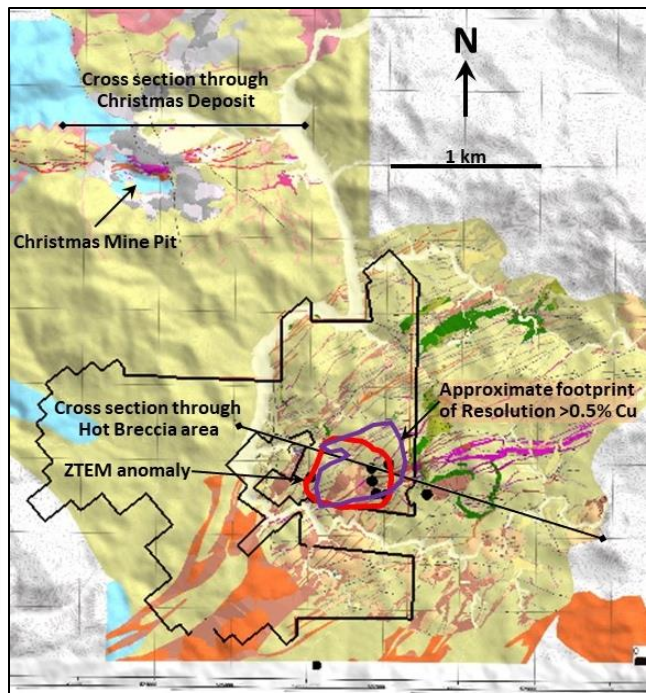
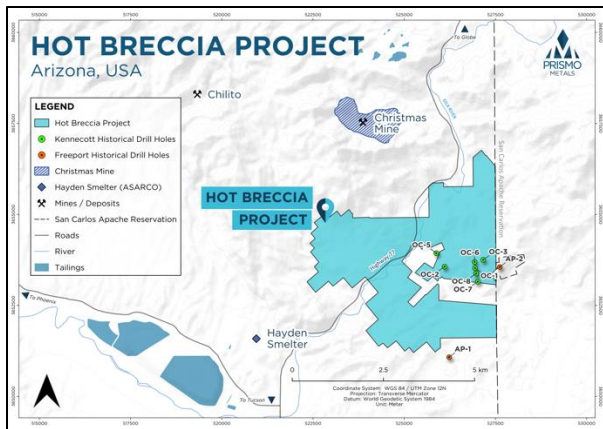


Schematic view of Hot Breccia from underneath the surface showing cross sections through the Christmas deposit and Hot Breccia, and conductive anomaly from ZTEM survey under geology similar to the Resolution deposit

地下视角Hot Breccia剖面：展示Christmas矿床与Hot Breccia剖面关系，以及ZTEM在类似Resolution地质环境下探测的导电异常带

Drilling Plan / 钻探计划

- Fully permitted / 已获全部许可
- Driller selected / 钻探商已选定
- Drilling budget: US \$2M
钻探预算：200万美元
- Planned drilling: / 计划钻探方案：
5,000m (3-5 holes): / 5000米
(3-5个钻孔)
 - Drill near historic holes: Test known mineralization and deepen to test new targets / 历史钻孔附近：验证已知矿化并向深部拓展新靶区
 - Drill in new areas: Test ZTEM anomaly and AI generated targets / 新区块钻探：测试ZTEM异常及人工智能生成靶区



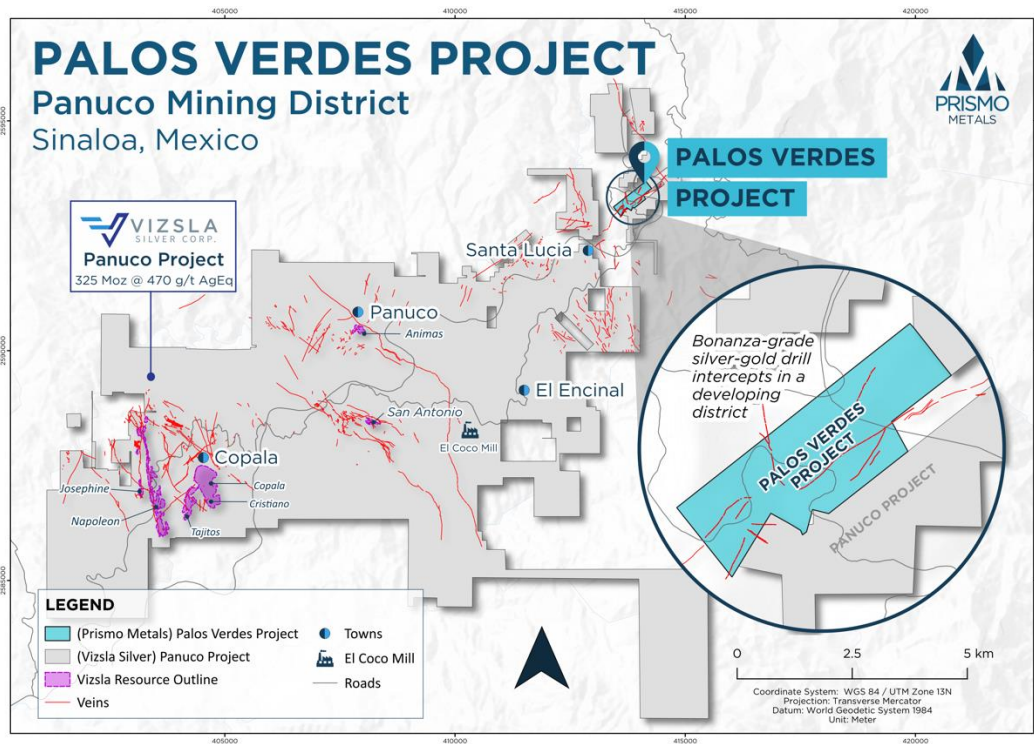
Geologic map of the Hot Breccia and Christmas areas, with cross section lines and historic drill holes shown, and approximate surface projection of the ZTEM conductor and the 0.5% Cu limit of the Resolution deposit / Hot Breccia与Christmas区域地质图标注：剖面线及历史钻孔位置，ZTEM导体地表投影范围，以及Resolution矿床0.5%铜品位边界近似投影

Panuco District / Panuco矿区

Panuco district / Panuco矿区

- **Strategic partner / 战略合作伙伴:** Vizsla Silver Corp. (TSXV: VZLA):
 - ◆ 155.8Moz Ag equivalent indicated resources & 169.6Moz Ag equivalent inferred / 指示资源量: 1.558亿盎司银当量; 推断资源量: 1.696亿盎司银当量
 - ◆ Robust PEA with 85.7% IRR and 15.2moz silver equivalent per year production / 初步经济评估 (PEA) 显示强劲效益: 85.7%内部收益率, 年产量1520万盎司银当量
 - ◆ Planned 3,300 tpd production with initial 10+ year mine life / 规划日处理量3300吨, 初始矿山寿命10年以上
 - ◆ Market cap: 1 billion / 市值: \$10亿
- **Palos Verdes / Palos Verdes项目**
 - ◆ Northeastern end of Panuco district
 - ◆ 位于Panuco矿区东北端
 - ◆ Surrounded by Vizsla Silver / 被Vizsla Silver矿包围

Land map for the Panuco Copala district showing the Palos Verdes Property location in light blue in the northeastern portion of the district, with Vizsla ground in gray. Important vein orientations are northwest and northeast.



Drilling Results / 钻探成果

Prismo Drilling to Date / Prismo迄今钻探进展

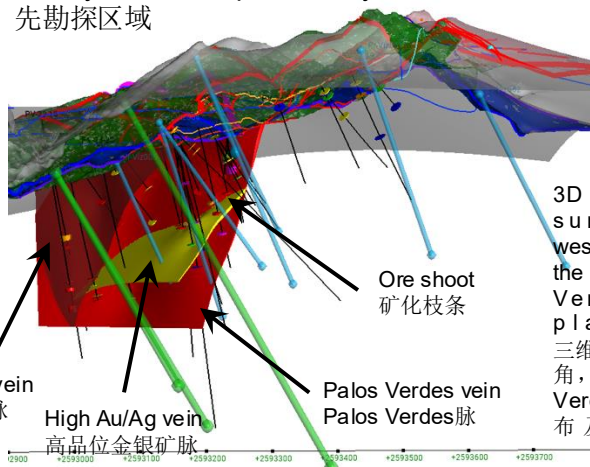
- 6,052 meters completed in 33 holes to date / 已完成33个钻孔，总进尺6052米
- Bonanza grade intercepts in mineralized shoot / 矿化脉中发现富矿级矿段
- Comparable results to west side of district (Napoleon, Copala)
成果与矿区西侧（Napoleon、Copala区域）具可比性
- Drill hole PV-18-02 cut: / 钻孔PV-18-02见矿情况：
 - 8.42 g/t Au, 2,335.98 g/t Ag, 0.27% Cu, 1.72% Pb and 2.46% Zn or **3,205 g/t silver equivalent over 1.15 m / 1.15米矿段中见8.42克/吨金、2335.98克/吨银、0.27%铜、1.72%铅、2.46%锌，即3205克/吨银当量**
- Drill hole PV-23-25 cut the best intercept to date at the project: / 钻孔PV-23-25中返回项目迄今最佳矿段：
 - With 102 g/t Au and 3,100 g/t Ag, or **11,520 g/t silver equivalent over 0.5 meters / 0.5米矿段中见102克/吨金、3100克/吨银，即11,520克/吨银当量**
 - This intercept is part of a wider mineralized interval with **4,311 g/t Ag equivalent over 1.35 meters / 该矿段属于更广阔矿化段的一部分：1.35米矿段中见4311克/吨银当量**



Drill site for hole PV-24-34 of the current drill program
当前钻探计划中钻孔PV-24-34在现场

Drilling Plan / 钻探计划

- Joint Prismo and Vizsla Technical Committee (Gibson, Velador, Megaw) recommended an expanded program of deeper drilling Prismo与Vizsla联合技术委员会 (Gibson, Velador, Megaw成员) 建议实施扩增的深部钻探方案:
- Collar holes on Vizsla concessions to get proper angle / 在Vizsla特许矿权地布设孔位以获得最佳钻探角度
- Priority area for exploration by Vizsla Silver / 列为Vizsla Silver优先勘探区域

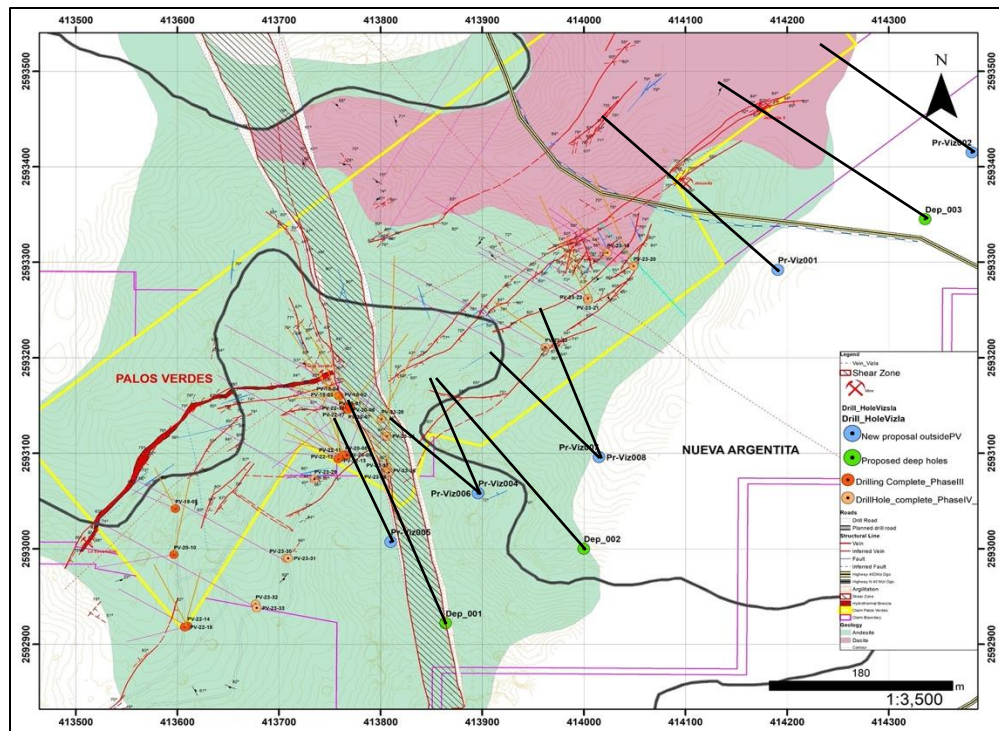


3D view of the subsurface looking westerly, with veins in the southwestern Palos Verdes claim and planned holes

三维可视化西向地下视角，显示西南部Palos Verdes矿权地内矿脉分布及计划钻孔位置

Map and 3D view of subsurface showing planned deep drill holes in blue and green.

含规划深钻孔的地下图与三维视图 (蓝色与绿色标注设计孔位)



Tight Share Structure

紧凑的股本结构



CSE: PRIZ
OTCQB: PMOMF
FSE: 7KU

Capital Structure / 股权结构

Shares held by founders, insiders, advisors & partners 创始人、内部人士、顾问及合作伙伴持股	24,045,648	28.7%
--	------------	-------

Vizsla Silver Corp (TSXV: VZLA)	5,100,000	6.1%
---------------------------------	-----------	------

Institutions / 机构投资者	5,800,000	6.9%
----------------------	-----------	------

Float / 流通股	48,702,038	58.5%
-------------	------------	-------

Total Shares Outstanding (basic) 总发行股本（基本）	83,647,686	100%
---	-------------------	-------------

Officers, directors & advisor options / 高管、董事及顾问期权 ⁽¹⁾	3,200,000	\$896,000
---	-----------	-----------

Officers, directors & advisor SARs & RSUs 高管、董事及顾问股票增值权（SARs）与限制性股票单位（RSUs）	1,925,000	N/A
--	-----------	-----

Warrants / 认股权证 ⁽²⁾	14,046,965	\$2,387,984
--------------------------------	------------	-------------

Warrants (Vizsla Silver) / Vizsla Silver 权证	550,000	\$137,500
---	---------	-----------

Sub total / 小计	19,721,965	\$5,552,259
-----------------------	-------------------	--------------------

Total Outstanding (Fully diluted) 总发行股本（完全稀释后）	103,369,651	
---	--------------------	--

Strong ownership by

Founders, Management Team, Advisors
创始人、管理团队及顾问持有大量股份

28.7% Management, Founders & Advisors / 管理层、创始人及顾问

6.1% Vizsla Silver (TSXV: VZLA)

Market cap: \$8.5 million⁽¹⁾

市值: \$850万⁽¹⁾

⁽¹⁾ As of September 3, 2025

（截至2025年9月3日）



CSE: **PRIZ**
OTCQB: **PMOMF**
FSE: **7KU**

Thank You

感谢参阅!

Alain Lambert,
CEO / 首席执行官
alambert@cpvcgroup.ca

Gord Aldcorn
President / 总裁
Gord.aldcorn@prismometals.com

www.prismometals.com