



PRISMO
METALS

**WHAT LIES BENEATH
THE SILVER KING?**

April 2026

Cautionary note

Forward-looking information and other disclaimers

This presentation contains “forward-looking information” and “forward-looking statements” (collectively, “forward-looking information”) within the meaning of applicable securities laws. Forward-looking information may relate to our future financial outlook and anticipated events or results and may include information regarding our financial position, business strategy, growth strategies, addressable markets, budgets, operations, expected future – including exploration expectations as stated herein, plans and objectives. In some cases, forward-looking information can be identified by the use of forward looking terminology such as “plans”, “targets”, “expects” or “does not expect”, “is expected”, “an opportunity exists”, “budget”, “scheduled”, “estimates”, “outlook”, “forecasts”, “projection”, “prospects”, “strategy”, “intends”, “anticipates”, “does not anticipate”, “believes”, or variations of such words and phrases or statements that certain actions, events or results “may”, “could”, “would”, “might”, “will”, “will be taken”, “occur” or “be achieved”. In addition, any statements that refer to expectations, intentions, projections or other characterizations of future events or circumstances contain forward-looking information. Statements containing forward-looking information are not historical facts but instead represent management’s expectations, estimates and projections regarding future events or circumstances. This forward-looking information and other forward-looking information are based on our opinions, estimates and assumptions in light of our experience and perception of historical trends, current conditions and expected future developments.

Statements containing forward-looking information are not historical facts but instead represent management’s expectations, estimates and projections regarding future events or circumstances. This forward-looking information and other forward-looking information are based on our opinions, estimates and assumptions considering our experience and perception of historical trends, current conditions and expected future developments, as well as other factors that we currently believe are appropriate and reasonable in the circumstances. Despite a careful process to prepare and review the forward-looking information, there can be no assurance that the underlying opinions, estimates and assumptions will prove to be correct. Certain assumptions in respect of our ability to execute our business plan; our ability to retain key personnel; our ability to finance our overheads and exploration plans; our ability to obtain and maintain financing on acceptable terms; currency exchange and interest rates; the changes and trends in our industry or the global economy; and the changes in laws, rules, regulations, and global standards are material factors made in preparing forward-looking information and management’s expectations.

When relying on forward-looking statements to make decisions, we caution readers not to place undue reliance on these statements, as forward-looking statements involve significant risks and uncertainties and should not be read as guarantees of future performance or results and will not necessarily be accurate indications of whether or not the times at or by which such performance or results will be achieved. A number of factors could cause actual results to differ, possibly materially, from the results discussed in the forward-looking statements. With respect to the forward-looking statements contained in this presentation, assumptions have been made regarding, among other things: current and future commodity prices; future global economic and financial conditions; demand for commodities and related products, and the supply of commodities; the accuracy and veracity of information and projections sourced from third parties respecting, among other things, future industry conditions and demand for commodities; and, where applicable, each of those assumptions set forth in the footnotes provided herein in respect of particular forward-looking statements.

All of the forward-looking information contained in this presentation is expressly qualified by the foregoing cautionary statements. These statements speak only as of the date of this presentation. Except as may be required by law, the Company expressly disclaims any intention or obligation to revise or up- date any forward-looking statements or information whether as a result of new information, future events or otherwise.

Non-Reliance

This presentation does not provide full disclosure of all material facts relating to Prismo Metals Inc., or its securities, and is not subject to liability for misrepresentations under applicable securities legislation.

This presentation is property of Prismo Metals Inc. (the “Company”, “Prismo”, “us” or “we”) and is strictly confidential. It cannot be circulated or forwarded without our consent. Any graphs, tables or other information demonstrating our historical performance or that of any other entity contained in this presentation are intended only to illustrate past performance and are not necessarily indicative of our or such entities’ future performance. The information contained in this presentation is accurate only as of the date of this presentation or the date indicated. No securities regulatory authority has expressed an opinion about the securities described herein and it is an offence to claim otherwise.

As required by NI 43-101, Prismo hereby confirms that references to technical information about adjacent or nearby properties does not mean nor does it imply that Prismo will obtain similar information from its own properties.



Focused on discovery

A team of world-class mining exploration talent growing shareholder value by acquiring, exploring, and developing precious and base metals assets in Arizona and Mexico

- 4 Catalyst-rich exploration properties** in Tier One jurisdictions
- 3 Company-making discoveries** credited to accomplished leadership team and advisors
- 2 Precious and base metals past producers** being explored with modern techniques in the heart of the famous Arizona copper belt
- 1 Potentially world-class project:** significant silver and copper target in Arizona

\$10M Mkt Cap

Common shares outstanding: 115 m, approximately 25% held by engaged and supportive founders, advisers, and partners. Largest shareholder Vizsla Silver holds 5%



Accomplished leadership

A proven team of successful explorers with a legacy of discovery balanced by capital markets expertise



Alain Lambert
CEO & Co-founder

- 35 years: financing and advising small- to medium-sized companies
- Involved in raising \$1B via public and private financings
- Extensive capital market network



Gordon Alcorn
President

- Formerly President and VP, Corp Dev for two Chilean gold and copper exploration companies
- Extensive capital markets and corporate development experience
- Previously with Nesbitt Burns and Wood Gundy



Dr. Craig Gibson
CXO & Co-founder

- Founder of Mexico-based exploration services company
- Director, Garibaldi Resources
- PHD in Economic Geology
- Qualified Person under NI 43-101

Successful Explorers

Redefining silver exploration in Arizona and Mexico

Dr. Peter Megaw

Co-founder and Technical Advisor

- Discovered MAG Silver's Juanicipio silver deposit in Fresno district, for which he won 2017 Thayer Lindsey award
- Discovered Excellon Resources' Platosa Mine and co-founded Minaurum Gold
- Winner: Society of Mining Engineers 2012 Robert M. Dryer Award for Excellence in Applied Economic Geology

Steve Robertson

Advisor

- As CEO of Infinitum Copper, guided company through acquisition of projects in Arizona and Mexico
- Founder, Sun Metals, where he led the team through a significant copper-gold discovery
- Imperial Metals: designed successful Red Chris deep drilling program, increasing global resources



A catalyst rich exploration portfolio

Four properties: identifying and drilling new targets at historic silver and copper mines in Arizona plus a strategic relationship in Mexico

ACTIVE EXPLORATION



SILVER KING

High-grade silver in Arizona surrounded by Resolution

- **Historic producer of ~ 6.2 Moz silver at bonanza grades (up to 644 oz/t Ag)**, strategically located and fully enclosed by the claim block of Resolution Copper (BHP/Rio Tinto)
- Recent exploration has identified multiple new targets, including new **mineralized veins and a porphyry style mineralization**

RIPSEY GOLD

Historic producer, modern exploration planned

- **Historic high-grade gold-silver-copper producer** located 20 km west of the Hot Breccia project in the Arizona Copper Belt
- Sampling by Dr. Craig Gibson returned up to **15.9 g/t gold and 275 g/t silver over 0.75 meters** from the project, which has seen virtually no modern exploration

LIQUIDITY EVENTS



HOT BRECCIA

Indirect interest through 24% ownership of Blade Resources

- **Copper-gold in Arizona**, 40 km south of the Resolution Deposit (BHP/Rio Tinto JV)
- **Builds on historic Kennecott (now Rio Tinto & Phelps Dodge drilling (>1% Cu intercepts))** with modern data, including a large ZTEM anomaly and AI analysis, to refine targets for a **planned 5,000m drill program**

PALOS VERDES

Strategic relationship with Vizsla Silver

- **Vizsla / Prismo technical committee** focused on district scale potential: Dr. Peter Megaw (Prismo); Dr. Jesus Velador (Vizsla); & Dr. Craig Gibson (Prismo)
- Drilling highlights include **102g/t Au & 3,100g/t Ag (11,520g/t AgEq) over 0.5m**; a recent program, which utilized pads on Vizsla's ground to test the vein at depth, is now awaiting assay results



Arizona

A world-class district and major mining center that's been producing since the 1700s

THE RIGHT ADDRESS

In the heart of the AZ copper belt

INFRASTRUCTURE

This is mining country

THREE PROJECTS

Close enough to be managed from the same base, keeping costs low



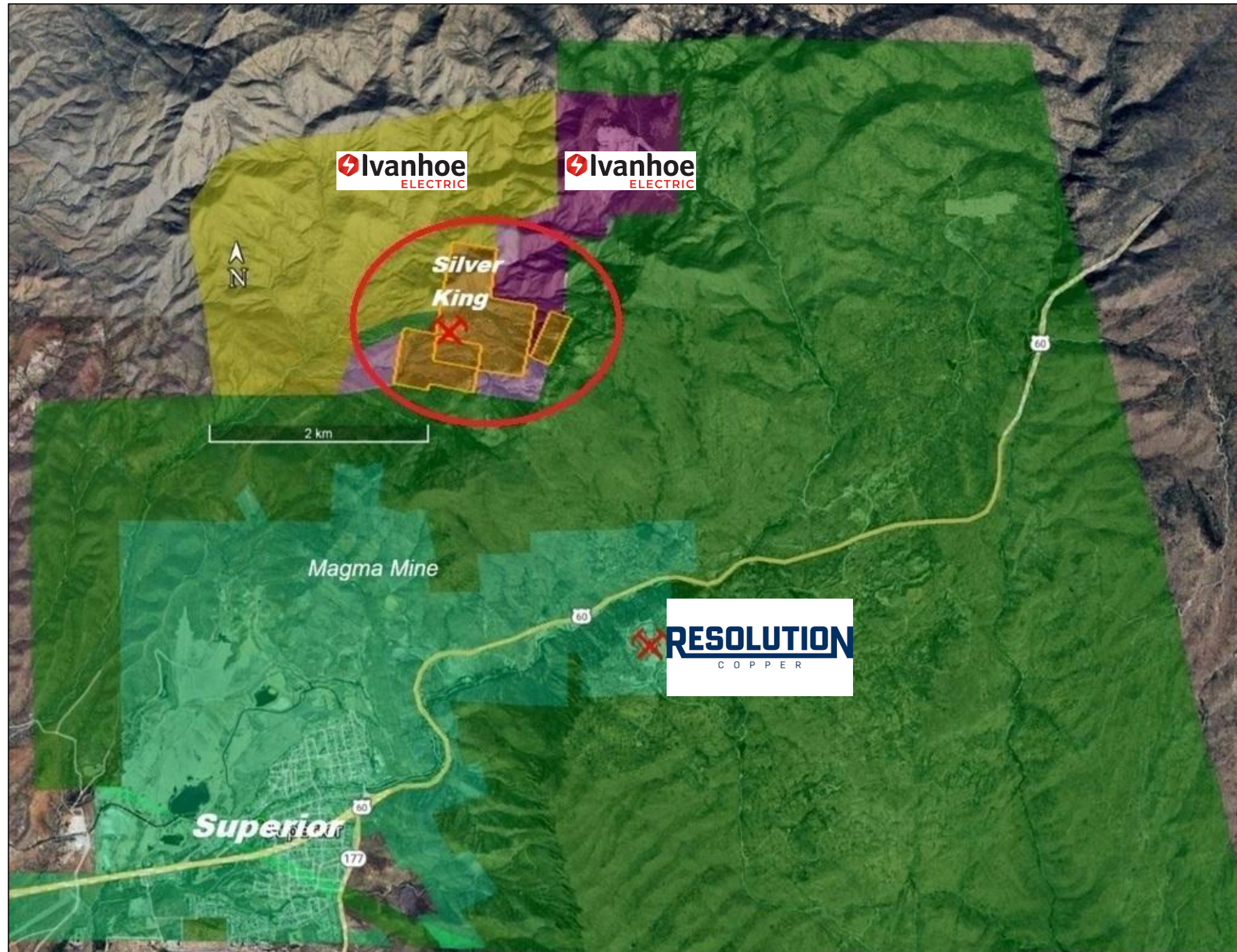
Superior Mining District, AZ

- The Superior Mining District in Arizona is renowned for its rich history of silver, copper, and gold mining, dating back to the 1870s.
- It gained fame with the Silver King Mine, then Arizona's richest silver producer, and later the Magma Mine (originally Silver Queen), which transitioned to major copper output.
- Today, it's highlighted by the massive undeveloped Resolution Copper deposit, one of the world's largest, underscoring the district's ongoing significance in copper production



Silver King Mine

Prime location with near surface mineralization



Surrounded by Resolution Copper (Rio Tinto and BHP) and Ivanhoe Electric (NYSE: IE) claims.



Exploration Focus: Silver King

- No records of exploration at depth
- No modern exploration or drilling
- Unique land position within a large claim block controlled by Resolution Copper/Ivanhoe Electric
- Produced high-grade silver, copper, and base metals

1875

Staking of the Silver King Mine

1879-1889

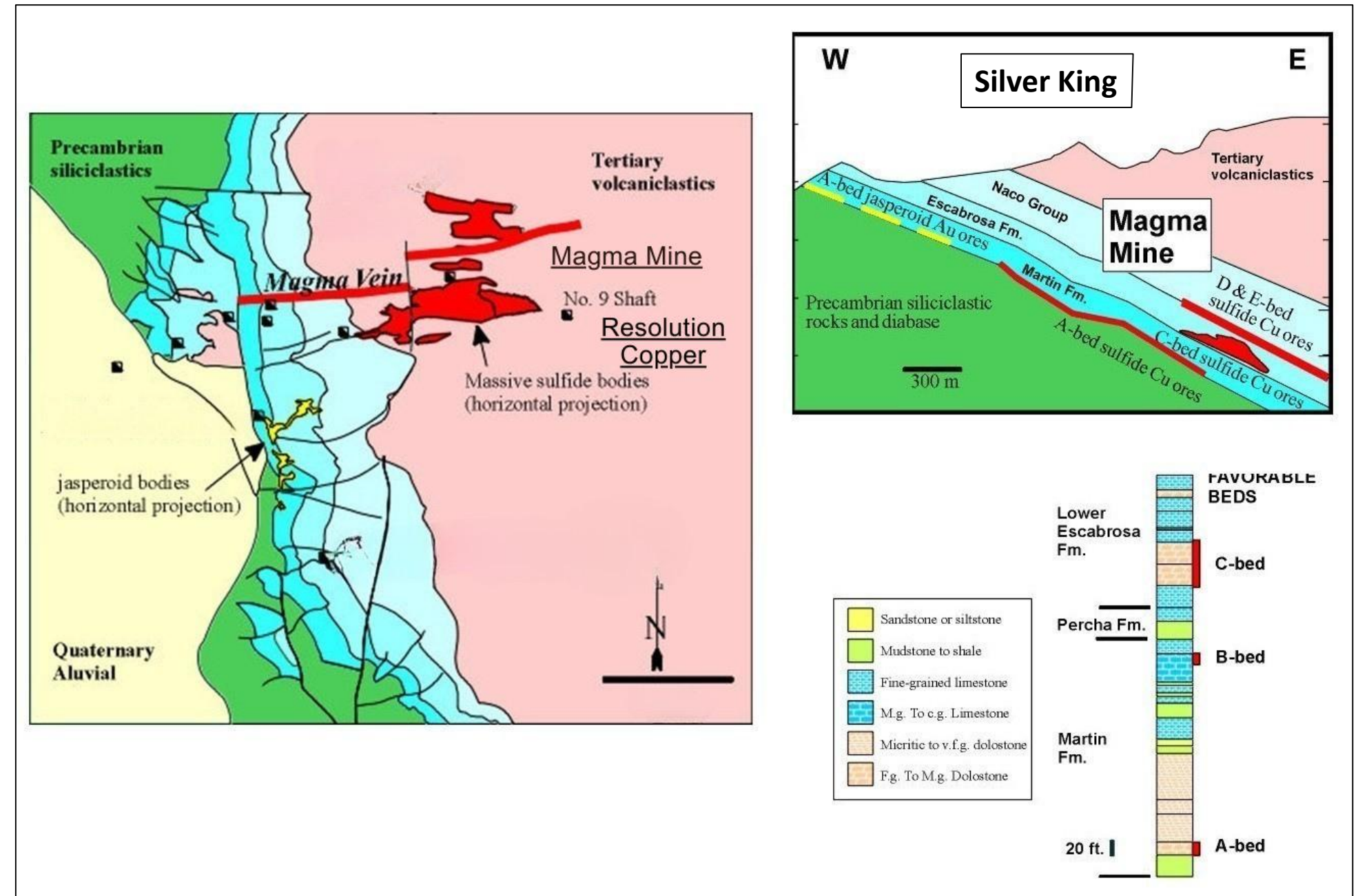
~ 6M ounces of silver at an average head grade ranging from 2,000 to 750 grams per ton with significant copper, lead, and zinc values

1918-1928

More than 231K ounces of silver at a head grade of 530 grams per ton silver

Magma Copper Mine

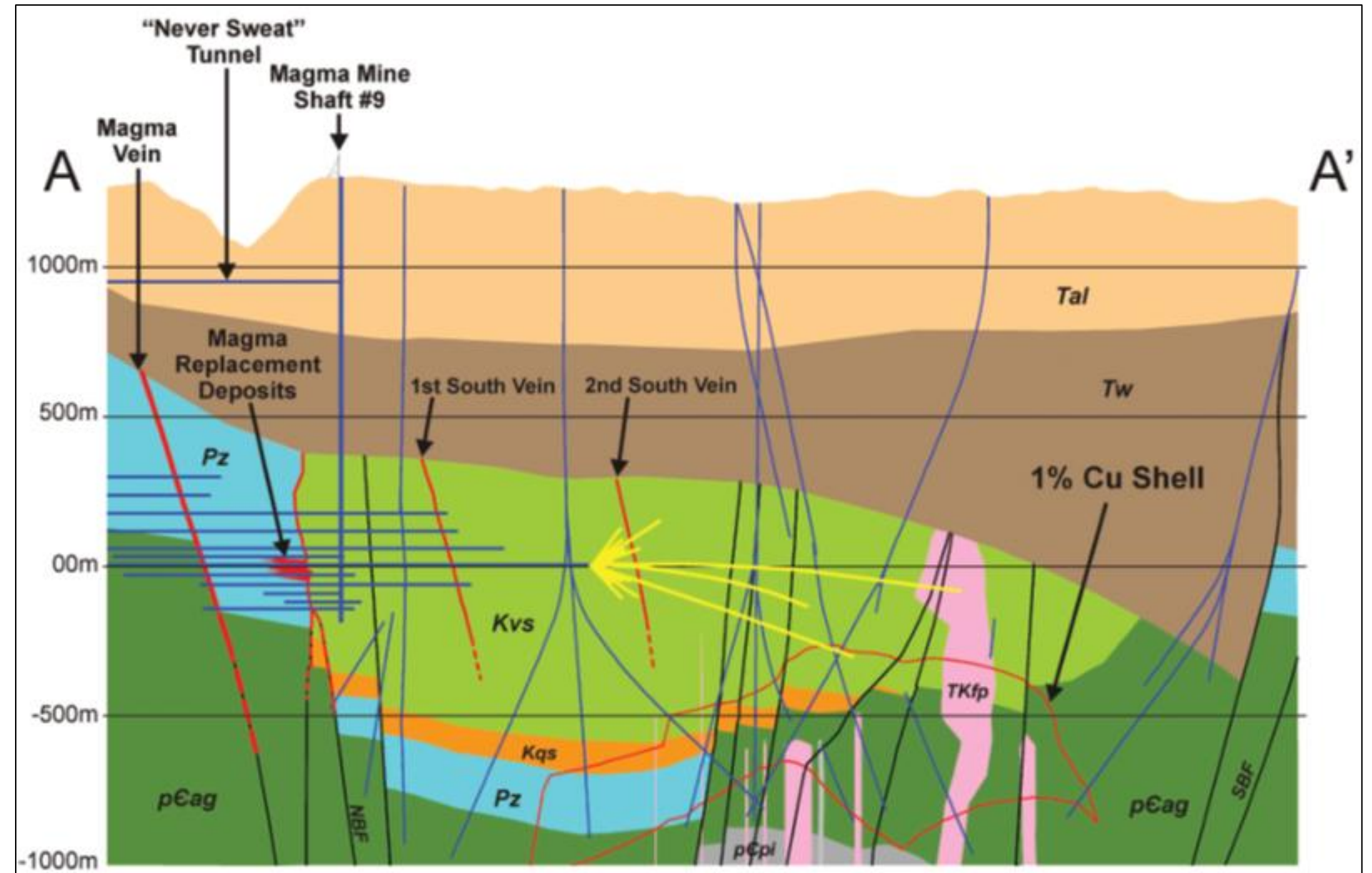
- Discovered in 1875 as the Silver Queen Mine, it focused on high-grade silver veins with initial shallow workings.
- In 1912, the mineralization shifted to copper-dominant sulfides like chalcopyrite and bornite at depth of 600-800 feet
- Became a major copper producer, yielding over 24.5 million tons of ore at ~5% Cu, plus 25 million ounces of silver and zinc byproducts.
- Magma represents deeper extensions linking it to the Resolution porphyry to the west, suggesting Silver King's shallower silver veins may overlie untapped copper zones, enhancing exploration potential
- Underground exploration at Magma eventually led to the discovery of the nearby Resolution copper deposit



Resolution Copper

- **Joint Venture:** BHP acquired Magma in 1996, then partnered with Rio Tinto to form the Resolution Copper Mining LLC joint venture (Rio Tinto 55%, BHP 45%), initiating advanced exploration.
- **Discovery:** The Resolution Copper deposit was identified in 1995 by Magma Copper Company geologists during deep drilling (~5,000–7,000 ft)
- **Massive Scale:** The Resolution Copper deposit contains an estimated 1.859 billion metric tons resource, making it one of the world's largest undeveloped copper deposits.
- **High-Grade Orebody:** Average grade of ~1.52% copper about 62.3 billion pounds of Cu ⁽¹⁾
- **Strategic Significance:** It could supply up to 25% of U.S. copper demand for 75 years, create thousands of jobs, and boost Arizona's economy by billions.

(1) Valued at US \$365 billion at current prices



March 16, 2026

**Resolution Copper
announces \$500 million
drill campaign**

Tal	Tertiary Apache Leap Dacite Tuff	Kqs	Cretaceous Quartzose Sedimentary Rocks
Tw	Tertiary Whitetail Conglomerate	Pz	Paleozoic Carbonate Rocks, Sandstone and Shale
TKfp	Tertiary-Cretaceous Felsic Porphyry Intrusive Rocks	pEag	Proterozoic Apache Group Sedimentary Rocks and Diabase Sills
Kvs	Cretaceous Volcaniclastic and Epiclastic Rocks	pEpi	Proterozoic Pinal Schist



Silver King In Elephant Country

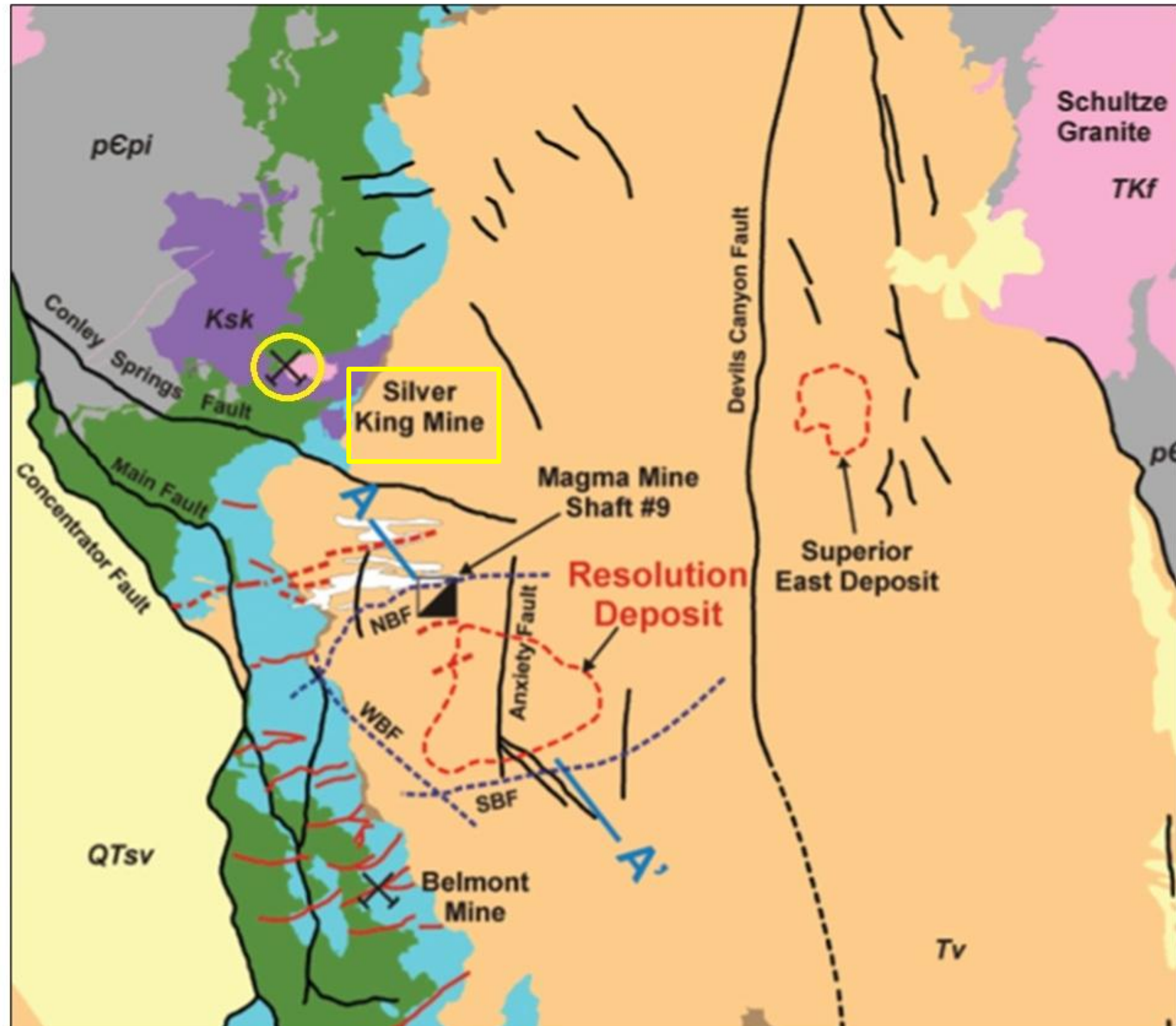
Prime Location in Proven Copper Belt

Adjacent to World-Class Resolution Copper Deposit

Surrounded by Majors

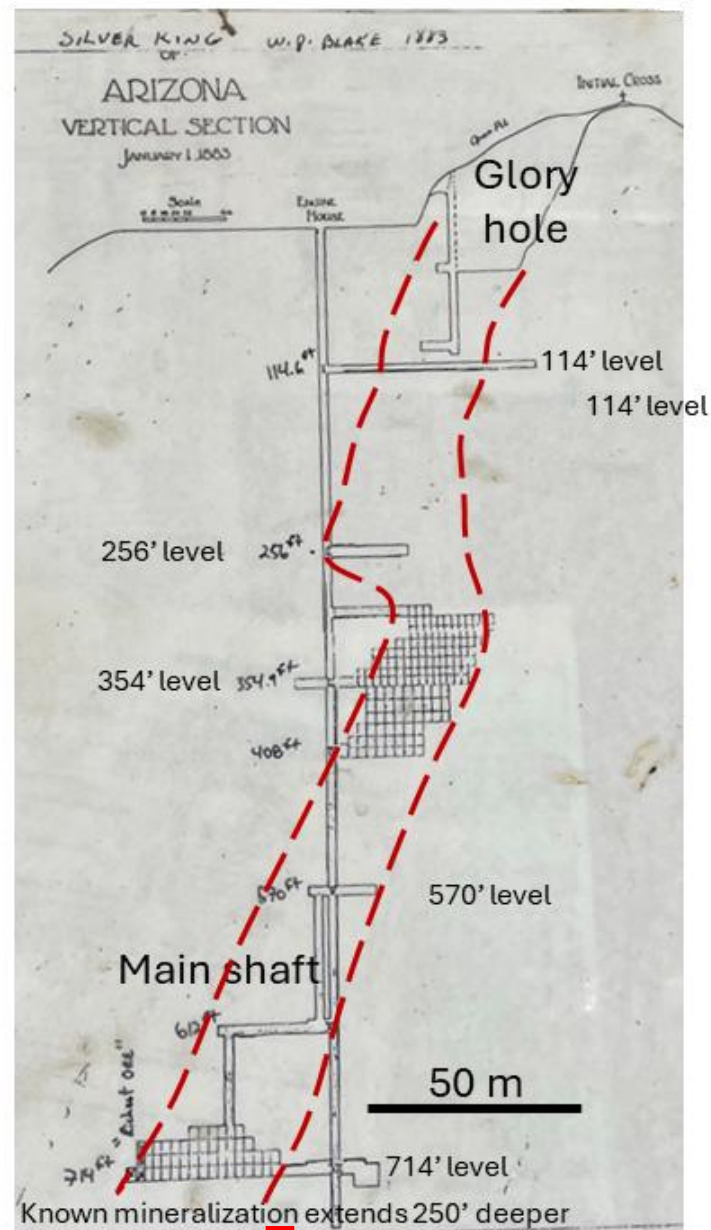
Exploration Upside

Shared Geology with Giants



Drill Campaign Phase 1 Completed

Goal is to test high-grade zone from surface to depth, as well as identify new targets located outside historic mining area



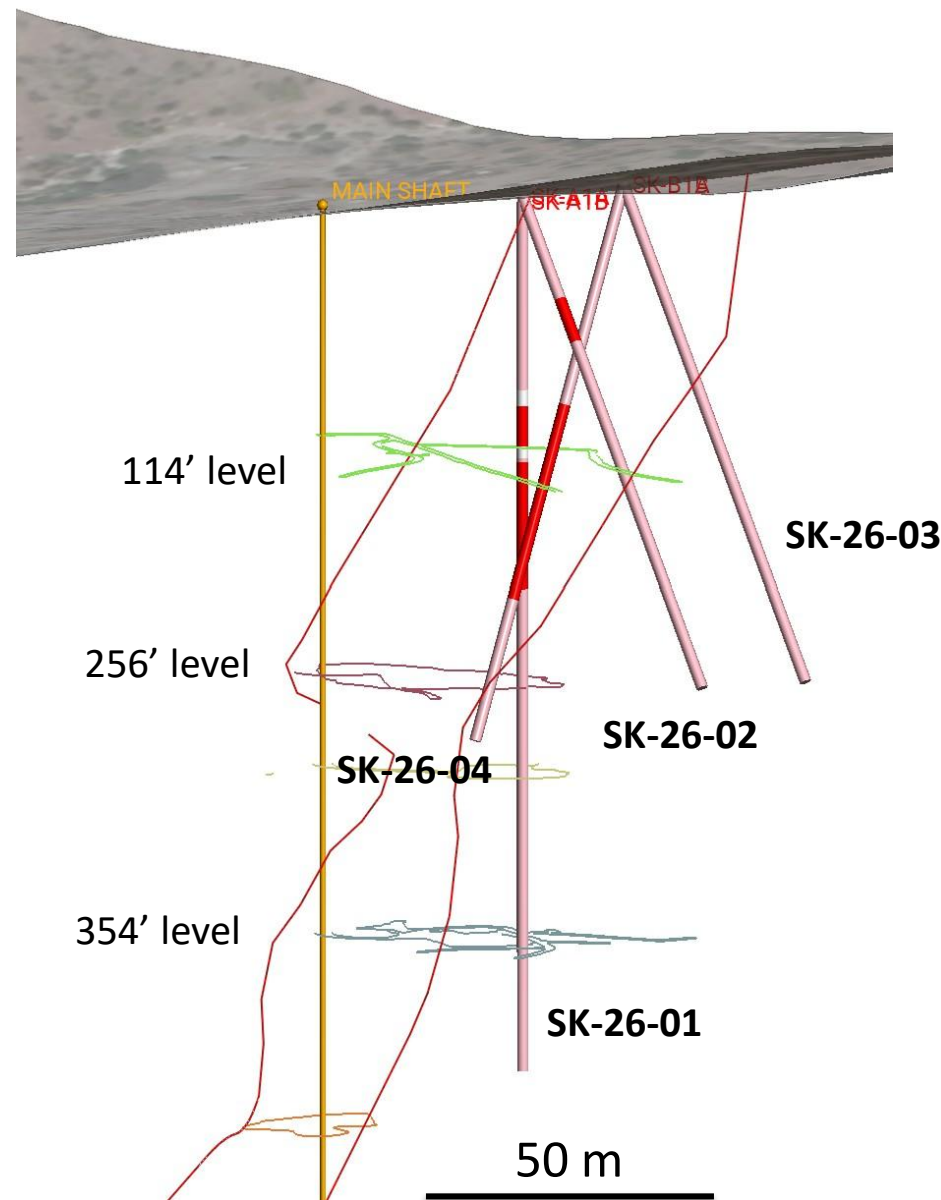
- 1,272 meters of drilling in Phase 1 completed:
 - Seven holes were designed to test the upper portions of the historically mined Silver King pipe-like mineralized body
 - One hole (SK-26-07) was a deep test targeting the down-plunge extension below the historic mine workings
 - Extensive quartz veining and visible silver-bearing sulfides confirmed in the upper portions of the historic Silver King pipe-like body
 - Deep hole intersected potassic alteration, abundant disseminated pyrite, and local chalcopyrite and pyrrhotite in a previously unrecognized

Vertical zoning established — shallow high-grade silver transitioning into deeper possible porphyry-style copper mineralization similar to transition at the nearby Magma mine (formerly Silver Queen)



Next phase of exploration start April 20

Next Steps



- Down hole geophysics
- Petrographic thin-section analysis of key rock types to confirm alteration and mineral species
- Multi-element geochemical sampling and mapping of workings across the mineralized embayment
- Detailed structure / alteration mapping of the embayment, including the Crown porphyry-stockwork north of the Black Diamond skarn replacement body, east of the historic Silver King workings

3D view of the Silver King mine workings showing completed drill holes with quartz veining and stockworks in red

Potassic Alteration



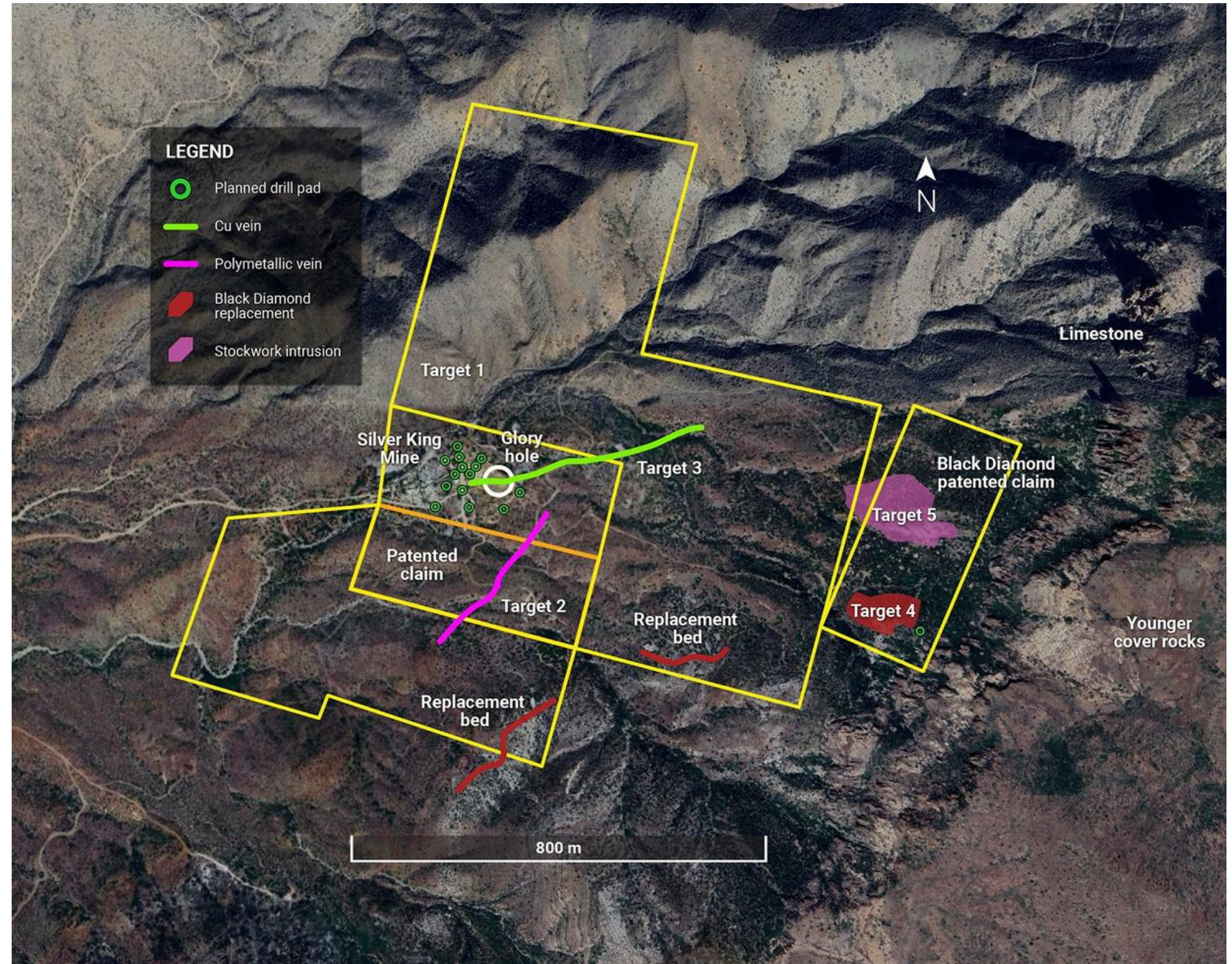
Silver bearing minerals and other sulfides



Silver King's Potential

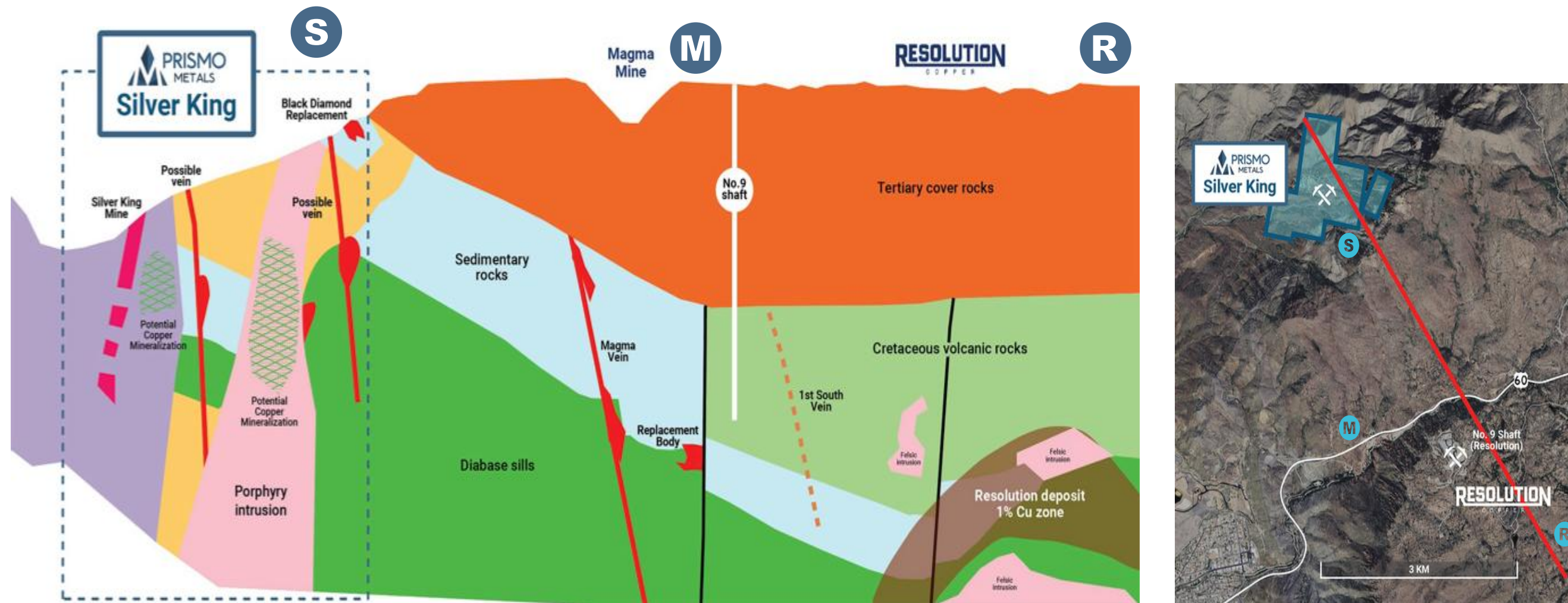
Significant exploration potential

- **Silver King Mine** – initial drill program explored high-grade cylindrical shaped silver deposit with historical mining
- **Polymetallic vein**, mineralization similar to the Silver King Mine with important historical production
- **Copper Vein** – copper and silver bearing vein with historic workings
- **Black Diamond limestone replacement body**, specular hematite masses with copper mineralization
- **Crown porphyry body** with anomalous metal values and local high-grade gold



No volcanic cover over favorable rocks

Like Resolution Copper, hosted by quartz diorite porphyry: mineralization described as stockwork and breccia forming an irregular cylindrical body plunging steeply to the west



Presence of freibergite (AgCuSbS) (silver, copper, antimony sulfide) indicates antimony could be important especially in the more accessible upper levels of the mine

Favorable limestone exposed at surface

- Favorable host rocks exposed on the eastern portion of the Silver King land package have similar replacement copper mineralization as the Magma mine
- Porphyry style mineralization is also exposed on the Silver King property with a strongly sericite-pyrite altered felsic intrusion with abundant stockwork quartz-pyrite veins



Exploration to date yield high grade assays in samples and new polymetallic vein

Results highlight high-grade nature of mineralization and identify multiple new drill targets

sample	Au (g/t)	Ag (g/t)	Cu (%)	Pb (%)	Zn (%)	Sb ppm	Bi ppm	Ba ppm	Hg ppm
SILVER KING MINE (SHAFT AREA)									
544514	1.07	619	0.59	0.44	0.63	337	3	>10000	1.7
544517	0.04	511	0.09	0.26	0.43	377	0.02	>10000	15.66
NEW POLYMETALIC VEIN									
544510	0.03	757	1.51	6.69	11.53	7788	0.3	>10000	12.84
COPPER VEIN									
544553	0.005	183	0.31	0.02	0.03	21.6	0.5	157	0.18
544554	0.009	198	0.29	0.01	0.03	24.5	0.6	92	0.02
544504	<005	44	0.10	0.01	0.02	396	0.2	524	0.13

MINERALIZATION
in stockpiles from
the historic silver
deposit

New **high-grade vein** identified
during recon

New **silver-copper vein** identified in
the area of the
glory hole



Exploration has identified two additional targets on the east side of the project

Results highlight highly mineralized nature of the area and identify new drill targets

sample	Width (m)	Au (g/t)	Ag (g/t)	Cu (%)	Pb (%)	Zn (%)
BLACK DIAMOND COPPER REPLACEMENT ZONE						
544502	grab	0.47	7	1.35	–	0.02
544507	dump	2.26	25	2.43	–	0.23
544508	0.7	0.73	12	1.11	–	0.28
544575	0.5	1.08	0.15	5.56	0.013	0.03
544578	0.8	0.285	12.43	6.02	–	0.01
CROWN PORPHYRY STOCKWORK ZONE						
544561	2.0	0.02	177	0.07	0.37	0.02
544563	0.5	0.03	176	-	0.09	0.01
544591	1.0	5.19	46.44	0.05	0.21	0.06
544592	1.0	4.06	13.97	0.02	0.10	0.07

MINERALIZATION occurs as a **large body** on the Black Diamond claim **along strike** with the **stratigraphic horizon** at the nearby Magma mine

MINERALIZATION occurs as a **stockwork quartz veins** in a strongly **altered intrusive body** near the replacement



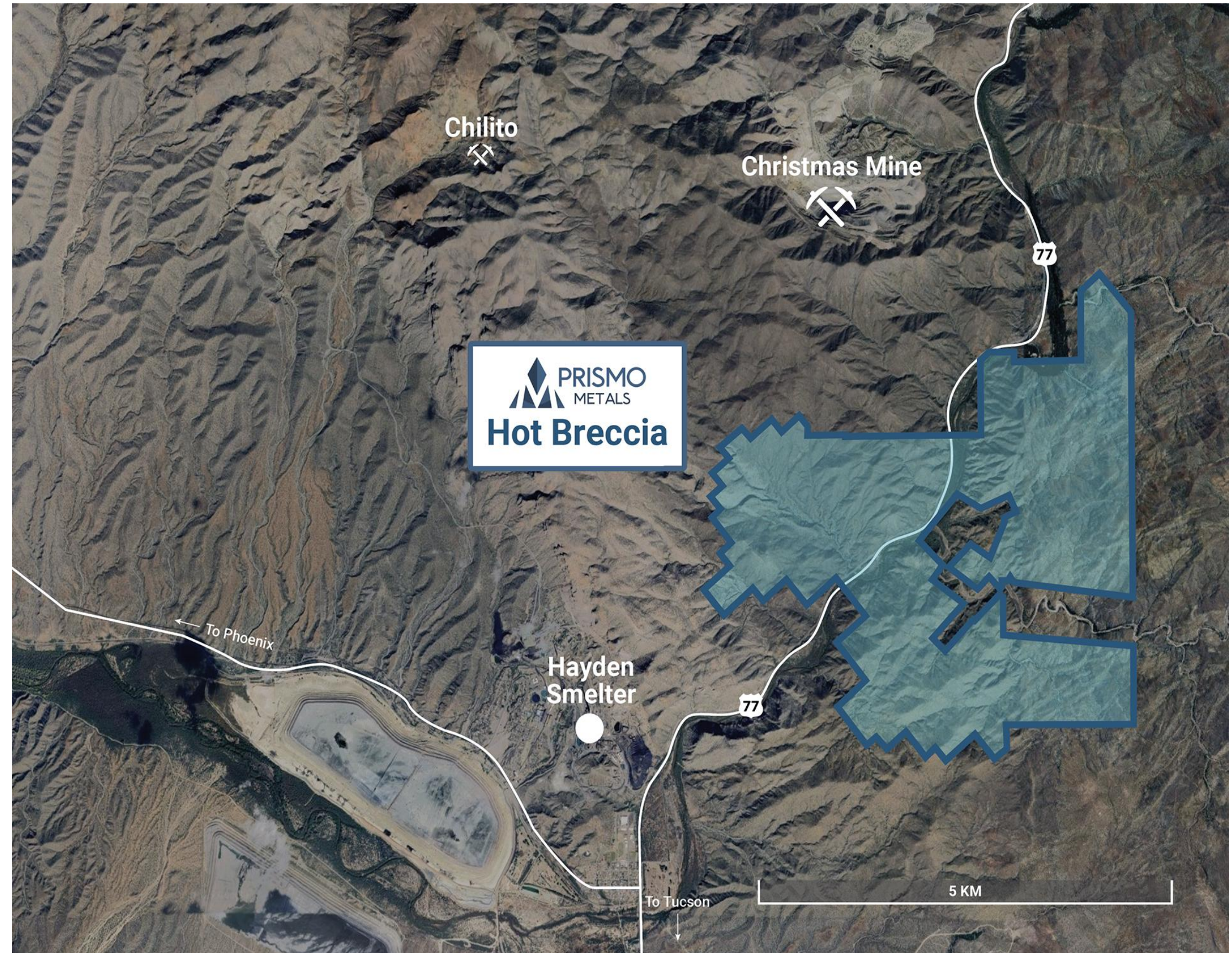
Fully permitted Hot Breccia

Indirect interest through 24% ownership of
Blade Resources

LARGE COPPER PROSPECT

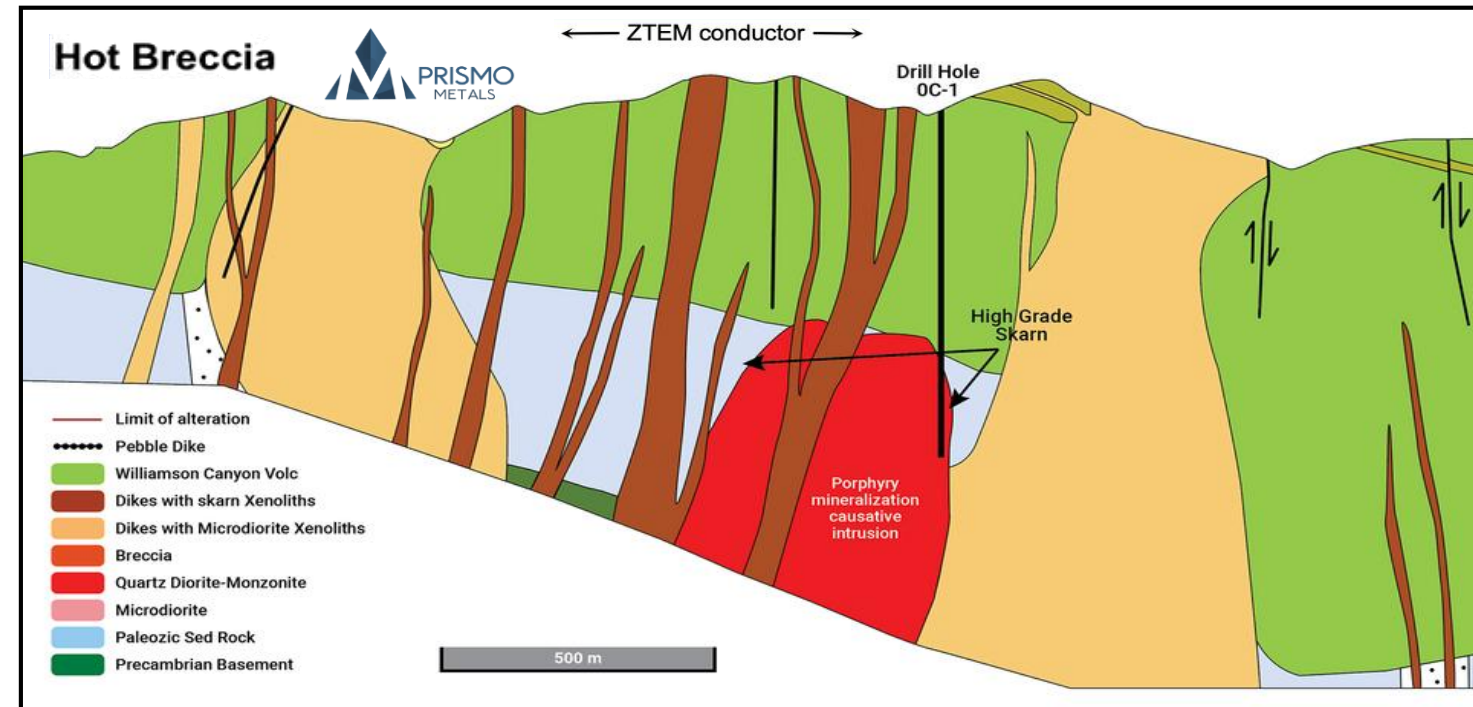
Looking for Resolution style target

- Located in district that hosts many of North America's largest porphyry copper deposits and over 200 known deposits
- Includes giants like Resolution, Morenci, Ray, Miami, and Bagdad, operated by majors like BHP, Freeport-McMoRan, Rio Tinto

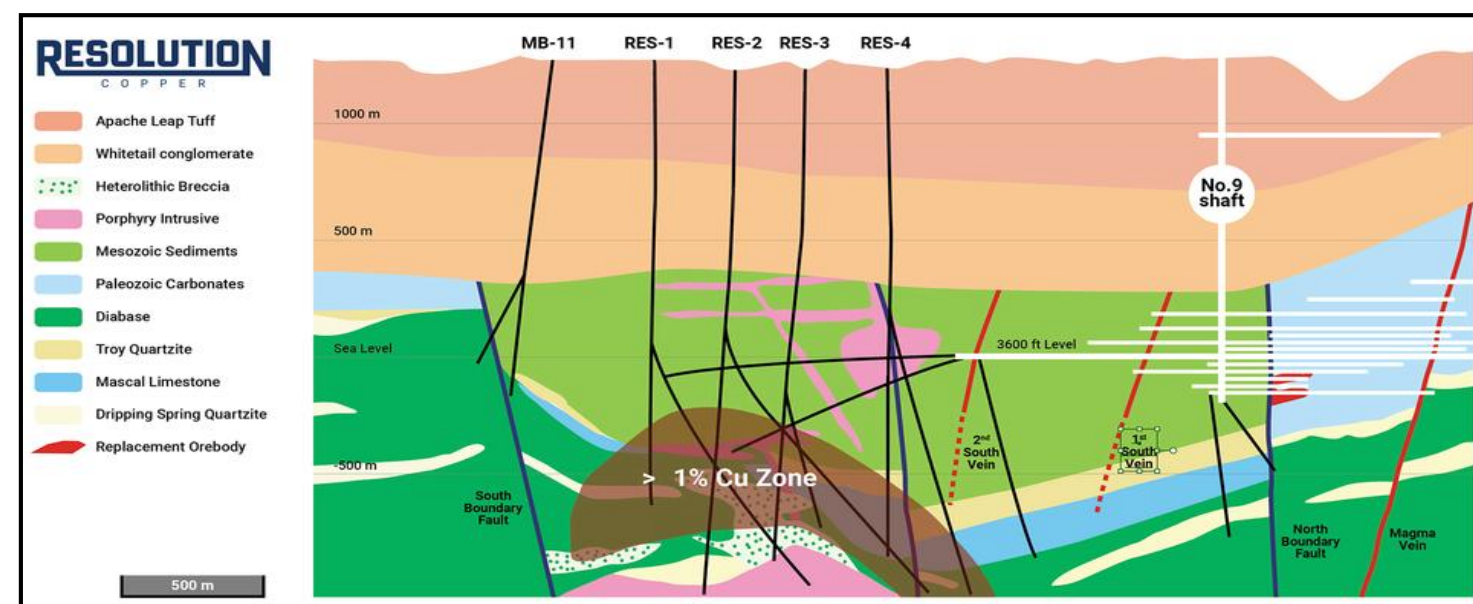


Fully permitted Hot Breccia

Indirect interest through 24% ownership of Blade Resources



- 40 km southeast of Resolution Copper
- Shares same Laramide-age geology and host rocks as Resolution, but starts much closer to surface
- Geological analogue to the historic Christmas Mine, which produced ~ 60M pounds of copper at grades exceeding 3% copper
- 2023 ZTEM geophysics revealed a large conductive anomaly comparable in scale to Resolution
- Builds on historic Kennecott (now Rio Tinto & Phelps Dodge drilling >1% copper intercepts) with modern data and AI to refine targets for planned 5,000 m drill program planned targeting skarn and porphyry-style mineralization



Schematic view of Hot Breccia from underneath the surface showing cross sections through the Christmas deposit and Hot Breccia, and conductive anomaly from ZTEM survey under geology similar to the Resolution deposit.



Ripsey Gold Mine

Part of Silver King acquisition package

- **500 meters of exposed vein** along strike
- Historic **gold-copper-silver** producer
- **Four patented** claims and patented mill site
- Like Silver King, **no modern** exploration techniques
- **Five-year earn-in** option agreement with no minimum exploration expenditures

PATENTED CLAIMS do not require a drill permit



No permits required

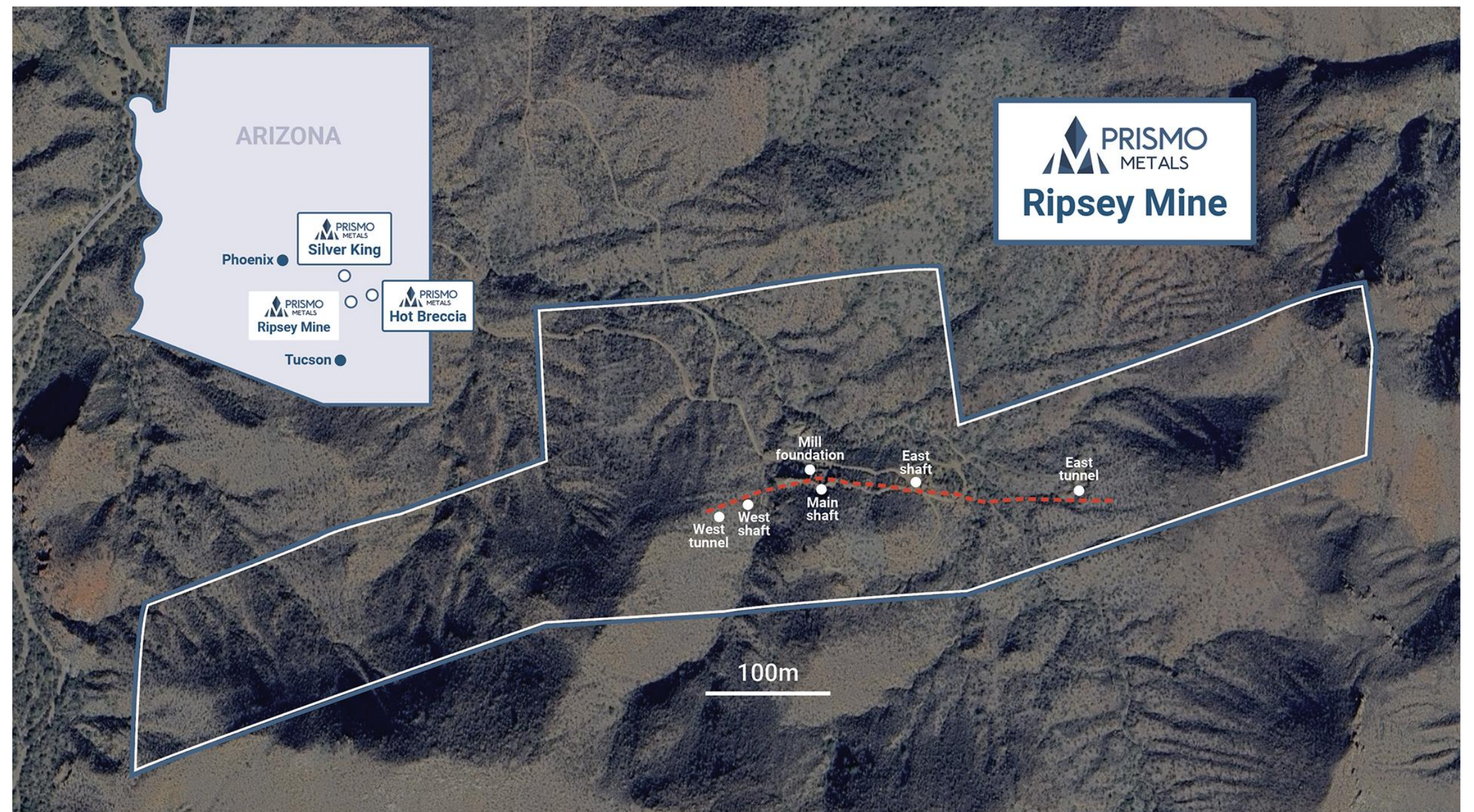
A two-phase, modern exploration program to complement Silver King

- Phase 1: detailed mapping and sampling over Ripsey vein in and around historic workings and along strike, as well as prospecting
- Phase 2: testing vein at depth and determine width of mineralized zone

30 HECTARES
in four patented claims

400 METERS
of strike covering an east-west vein with south dipping structure

160 METERS
depth of mine workings, which include three shafts



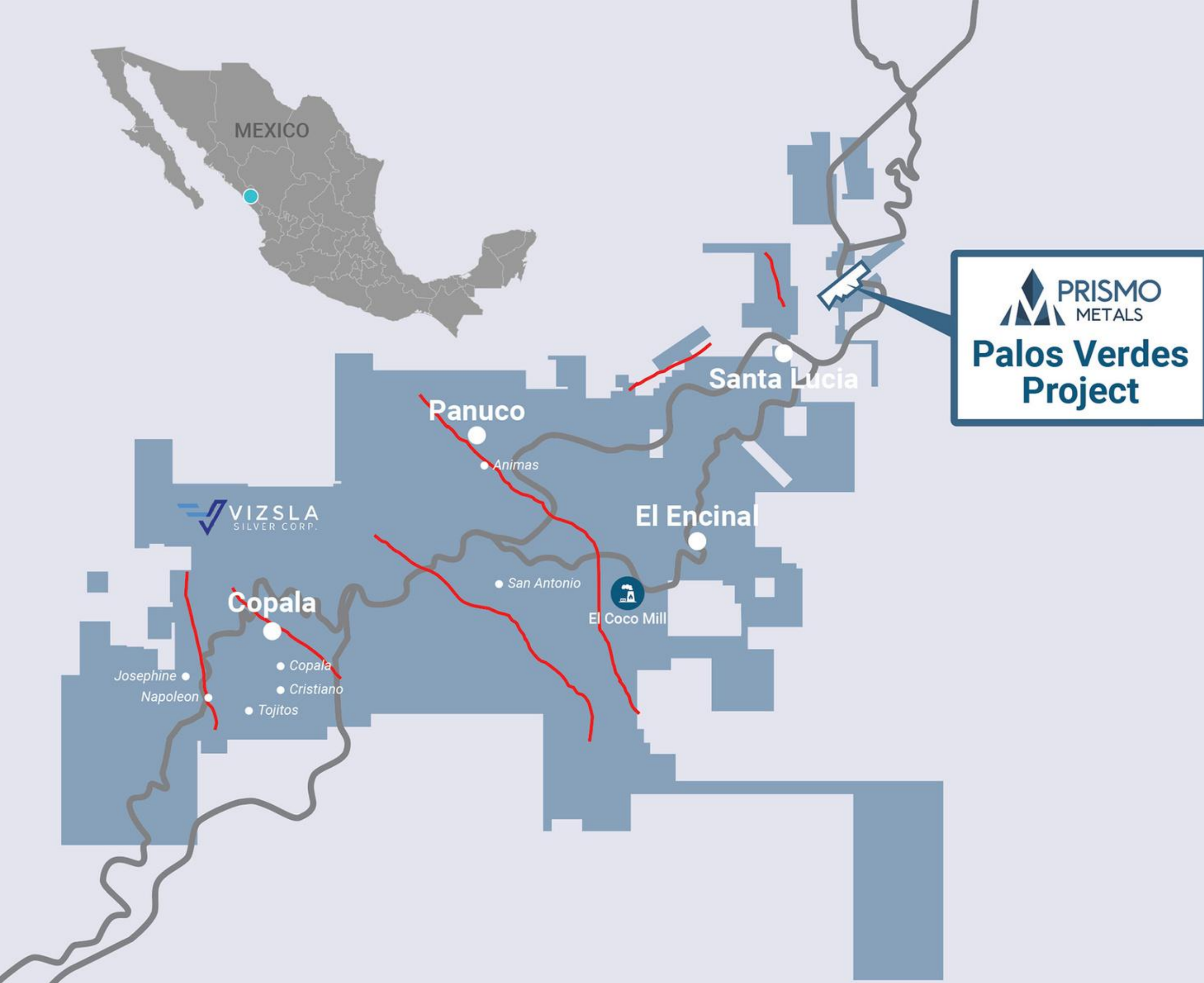
Spectacular assays from Ripsey Gold Mine samples: both in mine and at surface

Results extend known mineralization by 200 meters and significantly expand drill potential

sample	location	easting	northing	width (m)	Au (g/t)	Ag (g/t)	Cu (%)	Pb (%)	Zn (%)
544101	east surface	502,639	3,651,725	1.5	2.98	60.40	1.62	0.01	0.23
544102	east surface	502,679	3,651,748	0.5	0.02	1.80	0.79	–	1.56
544103	east surface	502,745	3,651,782	1.0	0.79	3.82	–	0.24	0.24
544104	east tunnel	–	–	0.6	14.7	214	3.28	0.42	3.26
544105	east tunnel	–	–	0.7	3.24	82.39	1.69	0.21	5.11
544106	east tunnel	–	–	0.6	3.14	132	3.46	0.36	6.52
544107	east tunnel	–	–	0.8	3.05	223	4.85	0.71	7.83
544108	east tunnel	–	–	0.75	1.42	68.10	0.30	0.16	3.39
544110	main stope	502,320	3,651,688	1.5	2.66	57.33	0.37	0.01	0.18
544111	main stope	502,309	3,651,888	0.4	0.06	1.36	–	–	–
544112	main shaft	502,288	3,651,888	0.75	14.6	148	0.60	0.20	0.18
544113	vein HW	502,259	3,651,677	0.75	0.75	42.50	0.17	0.10	–
54414	vein FW	502,250	3,651,677	0.75	0.11	5.10	–	–	–
54415	east shaft	502,420	3,651,693	1.5	1.19	18.57	0.11	–	–

overlimit results





Palos Verdes

Dual exposure to Vizsla's district-scale development and Prismo exploration upside

PANUCO

a productive, high potential silver district in Mexico

VIZSLA UNIQUE LOCATION

Surrounded on three sides by Vizsla Silver

6,000 METERS OF DRILL RESULTS

- Mineralization and results comparable to Vizsla Silver
- 33 holes include bonanza grades of 102 g/t gold, 3,100 g/t silver with base metals, and up to 11,520 g/t AgEq over 0.5 m, among the highest in the district

Catalysts for value creation

Driven by a systematic exploration approach that's based on results

ACTIVE EXPLORATION



SILVER KING

High-grade silver in Arizona surrounded by Resolution

- 2,000 meters of drilling in two phases
- Induced polarization study results pending

RIPSEY GOLD

Historic producer, modern exploration planned

- Phase 2 of exploration program

HOT BRECCIA

Blade Resources
eventual public listing

- 2026 objective: mobilize 5,000 m drill program targeting the deep ZTEM anomaly

LIQUIDITY EVENTS



PALOS VERDES

Strategic relationship with Vizsla Silver

- Hold in portfolio
- Advance
- Sell to Vizsla Silver
- Sell a silver royalty



Capital Structure

Shares held by founders, insiders, advisors & partners	29,045,648	25%
Vizsla Silver Corp (TSXV: VZLA)	5,100,000	5%
Float	81,017,668	70%
Total Shares Outstanding (basic)	115,163,316	100%
Officers, directors & advisor options ⁽¹⁾	4,000,000	\$760,000
Officers, directors & advisor SARs & RSUs	1,050,000	N/A
Warrants ⁽²⁾	43,836,227	\$7,890,521
Sub total	48,049,543	\$8,650,521
Total Outstanding (Fully diluted)	164,049,543	

(1) WAEP of \$0.19

(2) WAEP of \$0.18

Strong ownership by Founders, Management, Advisors

25%

Management, Founders & Advisors

5%

Vizsla Silver (TSXV: VZLA)

Market cap: \$10 million ⁽¹⁾

(1) As of March 15, 2026





CONTACT US

prismometals.com



linkedin.com/company/prismo-metals-inc/



x.com/PrismoMetals



instagram.com/prismometals



youtube.com/@prismometals



facebook.com/PrismoMetals



1110-1111 Melville Street,
Vancouver, BC
V6E 3V6



info@prismometals.com