

WHAT LIES BENEATH THE SILVER KING?

June 2026

Cautionary note

Forward-looking information and other disclaimers

This presentation contains “forward-looking information” and “forward-looking statements” (collectively, “forward-looking information”) within the meaning of applicable securities laws. Forward-looking information may relate to our future financial outlook and anticipated events or results and may include information regarding our financial position, business strategy, growth strategies, addressable markets, budgets, operations, expected future – including exploration expectations as stated herein, plans and objectives. In some cases, forward-looking information can be identified by the use of forward looking terminology such as “plans”, “targets”, “expects” or “does not expect”, “is expected”, “an opportunity exists”, “budget”, “scheduled”, “estimates”, “outlook”, “forecasts”, “projection”, “prospects”, “strategy”, “intends”, “anticipates”, “does not anticipate”, “believes”, or variations of such words and phrases or statements that certain actions, events or results “may”, “could”, “would”, “might”, “will”, “will be taken”, “occur” or “be achieved”. In addition, any statements that refer to expectations, intentions, projections or other characterizations of future events or circumstances contain forward-looking information. Statements containing forward-looking information are not historical facts but instead represent management’s expectations, estimates and projections regarding future events or circumstances. This forward-looking information and other forward-looking information are based on our opinions, estimates and assumptions in light of our experience and perception of historical trends, current conditions and expected future developments.

Statements containing forward-looking information are not historical facts but instead represent management’s expectations, estimates and projections regarding future events or circumstances. This forward-looking information and other forward-looking information are based on our opinions, estimates and assumptions considering our experience and perception of historical trends, current conditions and expected future developments, as well as other factors that we currently believe are appropriate and reasonable in the circumstances. Despite a careful process to prepare and review the forward-looking information, there can be no assurance that the underlying opinions, estimates and assumptions will prove to be correct. Certain assumptions in respect of our ability to execute our business plan; our ability to retain key personnel; our ability to finance our overheads and exploration plans; our ability to obtain and maintain financing on acceptable terms; currency exchange and interest rates; the changes and trends in our industry or the global economy; and the changes in laws, rules, regulations, and global standards are material factors made in preparing forward-looking information and management’s expectations.

When relying on forward-looking statements to make decisions, we caution readers not to place undue reliance on these statements, as forward-looking statements involve significant risks and uncertainties and should not be read as guarantees of future performance or results and will not necessarily be accurate indications of whether or not the times at or by which such performance or results will be achieved. A number of factors could cause actual results to differ, possibly materially, from the results discussed in the forward-looking statements. With respect to the forward-looking statements contained in this presentation, assumptions have been made regarding, among other things: current and future commodity prices; future global economic and financial conditions; demand for commodities and related products, and the supply of commodities; the accuracy and veracity of information and projections sourced from third parties respecting, among other things, future industry conditions and demand for commodities; and, where applicable, each of those assumptions set forth in the footnotes provided herein in respect of particular forward-looking statements.

All of the forward-looking information contained in this presentation is expressly qualified by the foregoing cautionary statements. These statements speak only as of the date of this presentation. Except as may be required by law, the Company expressly disclaims any intention or obligation to revise or up- date any forward-looking statements or information whether as a result of new information, future events or otherwise.

Non-Reliance

This presentation does not provide full disclosure of all material facts relating to Prismo Metals Inc., or its securities, and is not subject to liability for misrepresentations under applicable securities legislation.

This presentation is property of Prismo Metals Inc. (the “Company”, “Prismo”, “us” or “we”) and is strictly confidential. It cannot be circulated or forwarded without our consent. Any graphs, tables or other information demonstrating our historical performance or that of any other entity contained in this presentation are intended only to illustrate past performance and are not necessarily indicative of our or such entities’ future performance. The information contained in this presentation is accurate only as of the date of this presentation or the date indicated. No securities regulatory authority has expressed an opinion about the securities described herein and it is an offence to claim otherwise.

As required by NI 43-101, Prismo hereby confirms that references to technical information about adjacent or nearby properties does not mean nor does it imply that Prismo will obtain similar information from its own properties.



Potential Big Copper in Arizona

The Silver King and Hot Breccia projects located in the heart of the Arizona copper belt offer investors exposure to potentially world-class copper discoveries

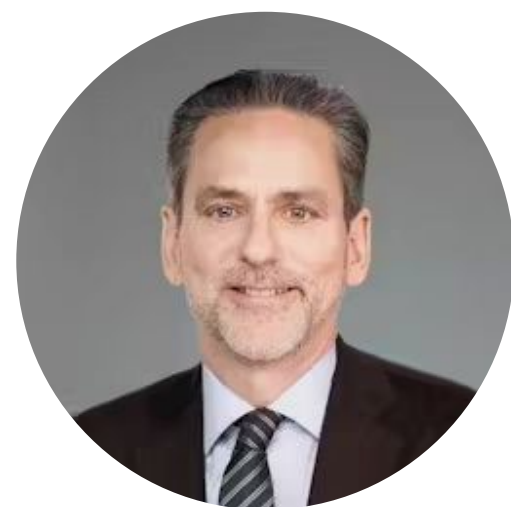
- 2 **Potentially world-class projects:** significant porphyry copper targets in Arizona
- 2 **Precious metals exploration properties** in Tier One jurisdictions
- 3 **Company-making discoveries** credited to accomplished leadership team and advisors

\$9.2M Mkt Cap **Common shares outstanding:** 115 m, approximately 25% held by engaged and supportive founders, advisers, and partners.



Accomplished leadership

A proven team of successful explorers with a legacy of discovery balanced by capital markets expertise



Alain Lambert
CEO & Co-founder

- 35 years: financing and advising small- to medium-sized companies
- Involved in raising \$1B via public and private financings
- Extensive capital market network



Dr. Craig Gibson
CXO & Co-founder

- Founder of Mexico/Arizona-based exploration services company
- Director, Garibaldi Resources
- Ph D in Economic Geology
- Qualified Person under NI 43-101



Dr. Linus Keating
Special Advisor

- 40+ Years experience with expertise in porphyry copper
- 14 years with Kennecott/Rio Tinto as Principal Geologist and District Manager
- Discovery Track Record
- AIPG Certified Professional Geologist and NI 43-101 Qualified Person

Successful Explorers

Redefining silver exploration in Arizona and Mexico

Steve Robertson *Advisor*

- As CEO of Infinitem Copper, guided company through acquisition of projects in Arizona and Mexico
- Founder, Sun Metals, where he led the team through a significant copper-gold discovery
- Imperial Metals: designed successful Red Chris deep drilling program, increasing global resources

Dr. Peter Megaw *Co-founder and Technical Advisor*

- Discovered MAG Silver's Juanicipio silver deposit in Fresno district, for which he won 2017 Thayer Lindsey award
- Discovered Excellon Resources' Platosa Mine and co-founded Minaurum Gold
- Winner: Society of Mining Engineers 2012 Robert M. Dryer Award for Excellence in Applied Economic Geology

Arizona: Mining Country

ARIZONA COPPER BELT

Produces 2/3 of USA's copper

EXCELLENT INFRASTRUCTURE

Mining-friendly jurisdiction

Roads, power, labor

SURROUNDED BY GIANTS

All large mining companies present

CSE: PRIZ | OTCQB: PMOMF | FSU: 7KU

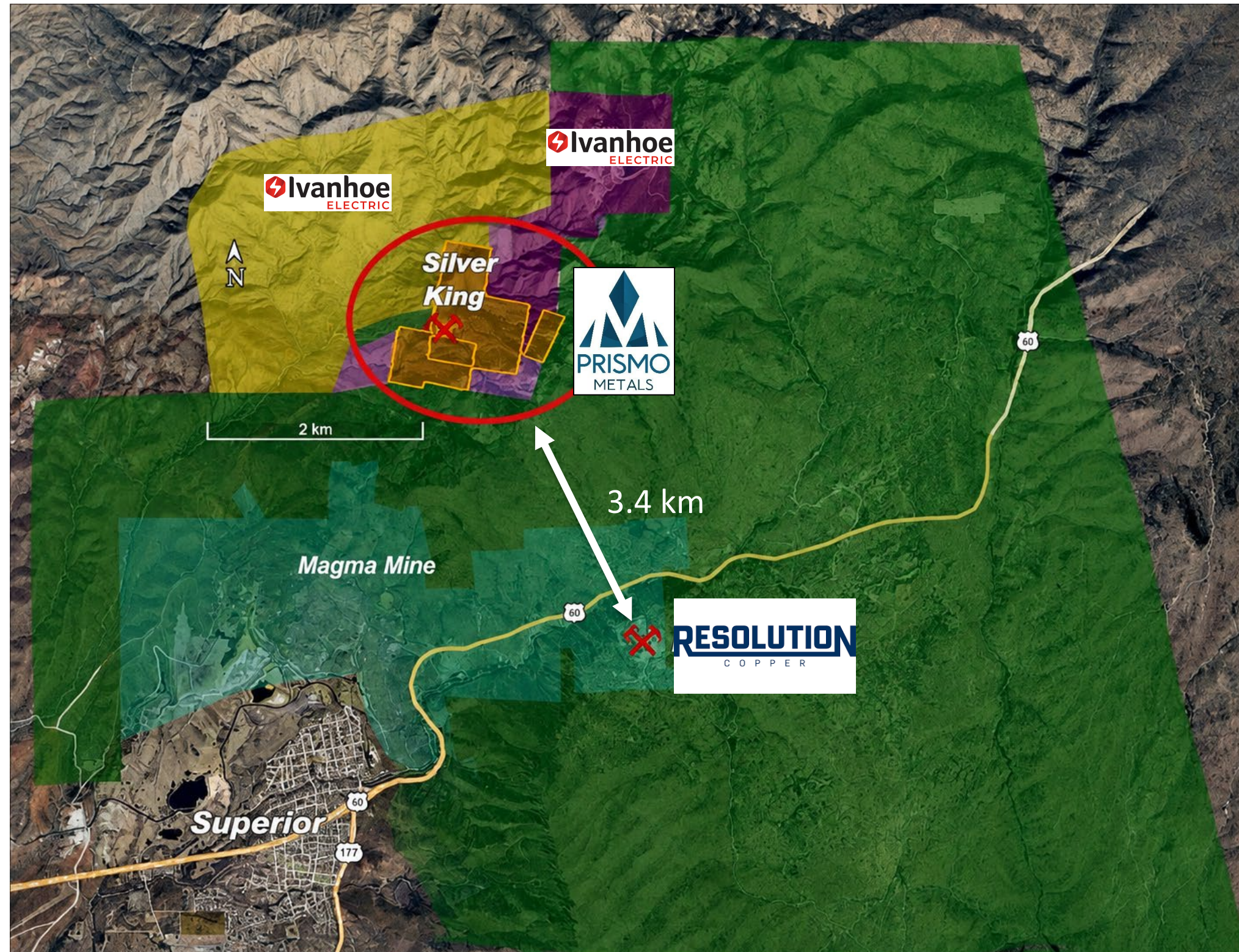


Superior (Pioneer) Mining District, AZ

- The Superior (Pioneer) Mining District in Arizona is renowned for its rich history of silver and copper mining, dating back to the 1870s.
- It gained fame with the **Silver King Mine**, then Arizona's richest silver producer, and later the Magma Mine (originally **Silver Queen**), which transitioned to major copper output.
- Today, it's highlighted by the massive undeveloped **Resolution Copper** deposit, one of the world's largest, underscoring the district's ongoing significance in copper production
- Arrival of **Ivanhoe Electric** in the district (Nov 2025)



Silver King – Enclosed by Giants



Essentially
Three Players
Resolution Copper
(Rio Tinto and BHP)

Ivanhoe Electric
(NYSE: IE)

Prismo Metals
(CSE: PRIZ)

Historic High-Grade Silver Mine with a Clear Copper Vector at Depth



- Purchased in the 90s by the Deen family
- No modern exploration or drilling recorded
- No exploration at depth until Prismo

• What Lies Beneath The Silver King?

- Does the mineralization beneath the mine change to copper porphyry style?

- Will the Silver Queen story repeat itself?

1875

Staking of the Silver King Mine

1879-1889

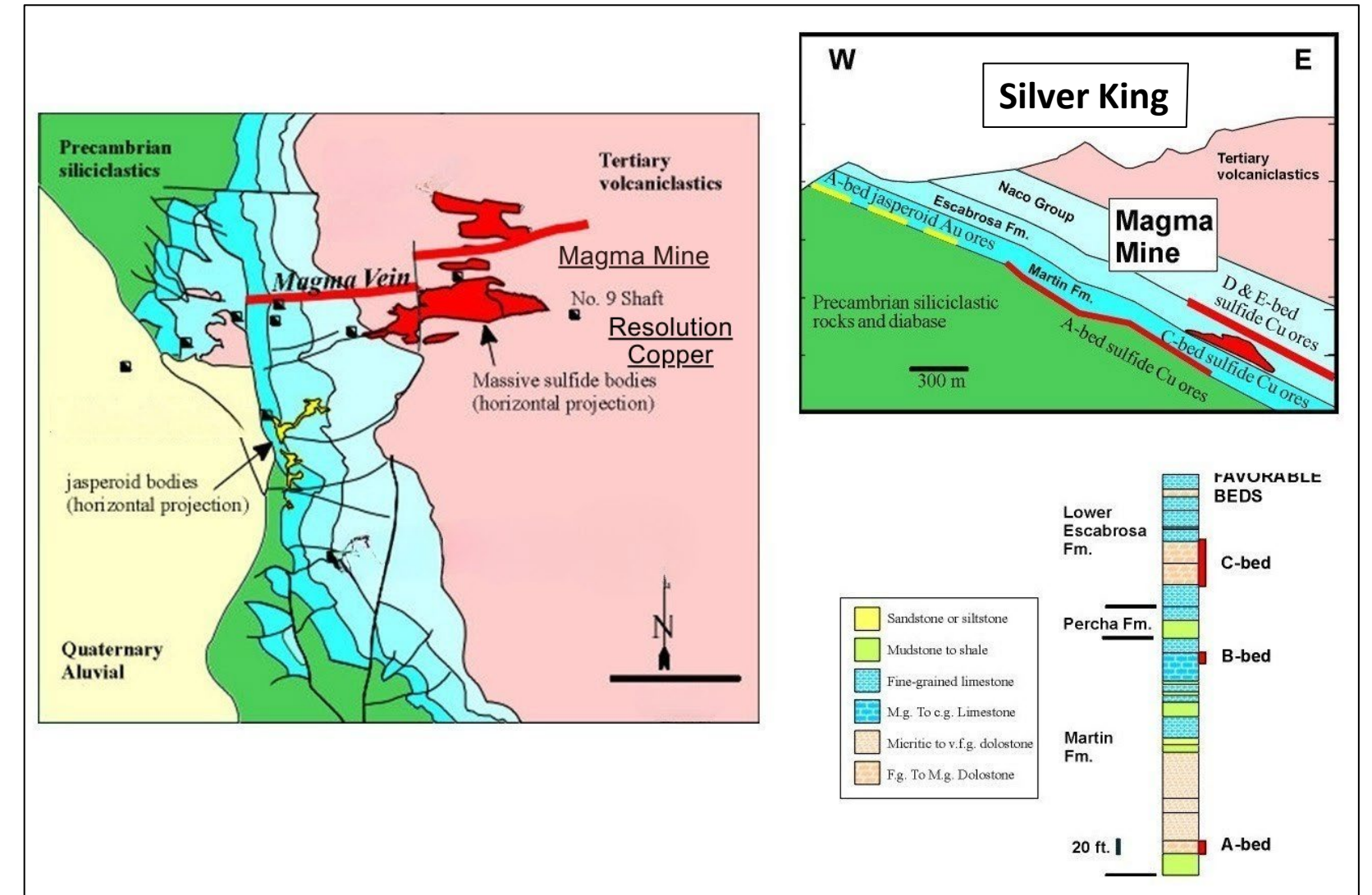
~ 6M ounces of silver at an average head grade ranging from 2,000 to 750 grams per ton with significant copper, lead, and zinc values

1928-2025

Largely dormant until Prismo Metals started exploration in the fall of 2025

Magma Mine: A Relevant District Analogy for Vertical Zoning

- Discovered in 1875, the historic Magma Mine (originally Silver Queen) began as a high-grade silver mine near surface.
- Became a major copper producer, yielding over 24.5 million tons of ore **at an average ~5% Cu**, plus 25 million ounces of silver and zinc byproducts.
- At depths of 600–800 ft, mineralization transitioned into copper-dominant hypogene sulfides (bornite and chalcopyrite).
- Magma ultimately produced over 24.5 million tonnes at an average grade of ~5% Cu.
- **Key parallel with Silver King:** Both show a transition from shallow silver-rich mineralization to copper-bearing hypogene mineralization at depth.



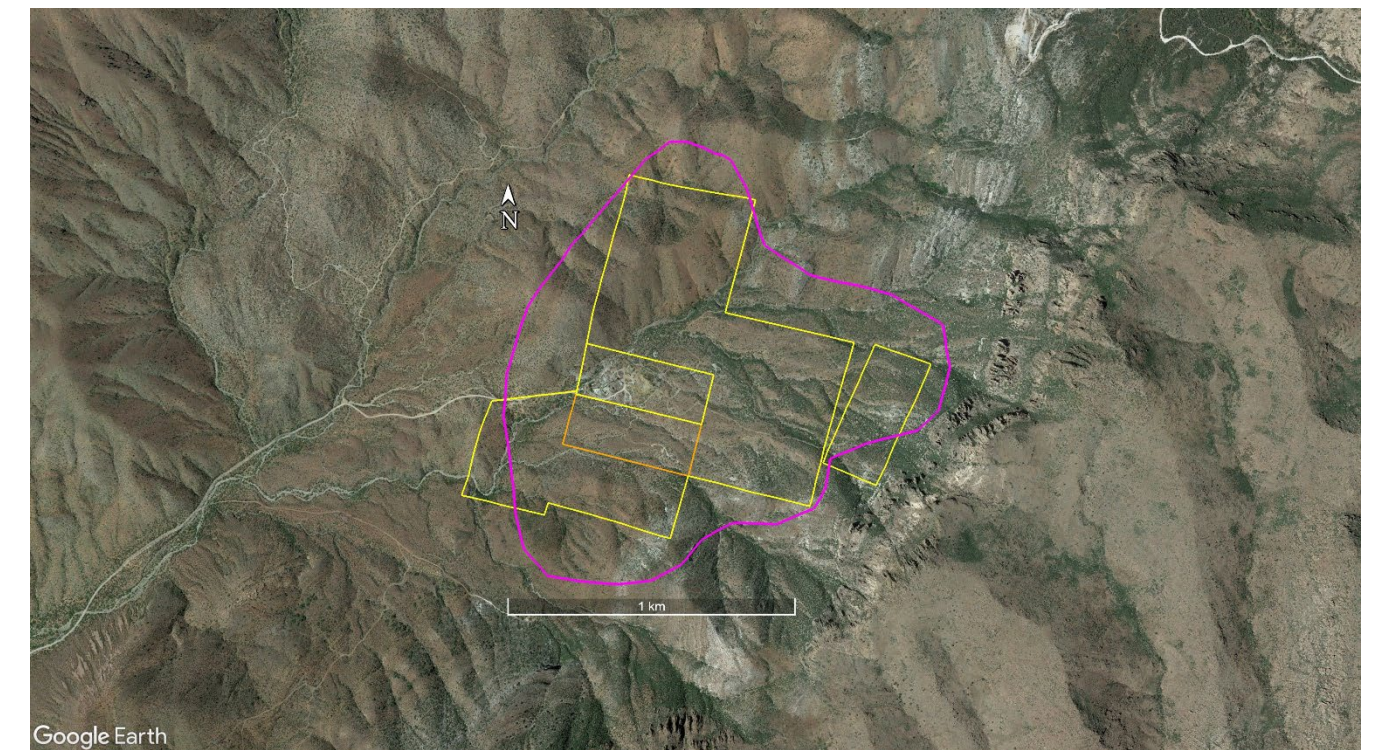
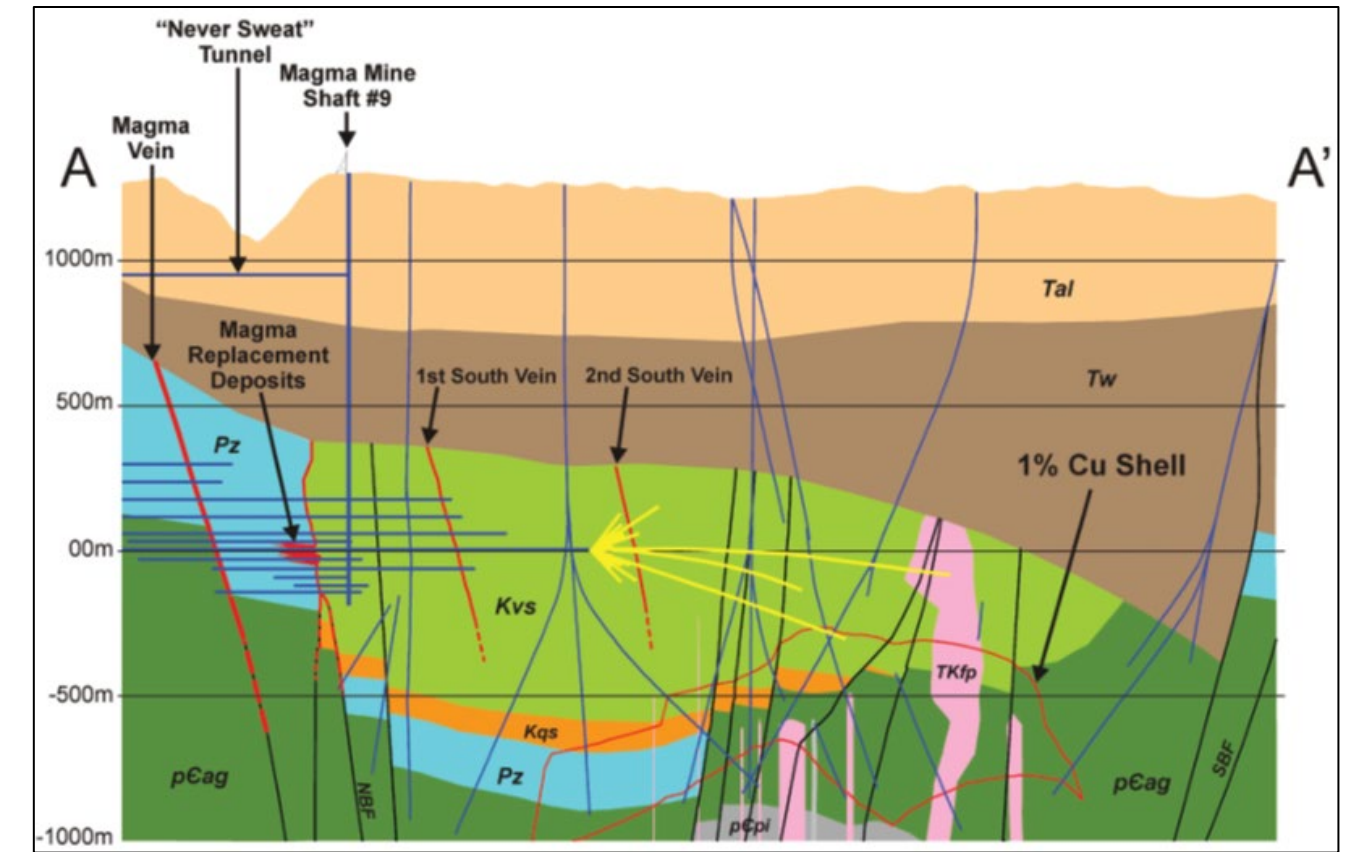
Dr. Gibson: “Silver King may be a ‘telescoped’ deposit... exactly like Magma’s silver-to-copper transition.”

Will History Repeat Itself at Silver King?

Aspects	Magma Mine (Silver Queen)	Silver King Mine
Discovery	1875	1875
Silver Production	1880–1893	1879-1889 1918-1928
Period of Inactivity	~1893 – 1910 (~17 years)	1928-2025 (~97 years)
Transition to Copper	1910 (became major copper producer ~85 years)	2026 (Established by Prismo Metals)
Depth of transition from Ag to Cu	800 feet	900 feet
Discovery of Porphyry System	1995 (Resolution discovered by drilling from Magma Mine)	Not yet discovered

Resolution Copper: The Giant Next Door

- **Joint Venture:** BHP acquired Magma in 1996, then partnered with Rio Tinto to form the Resolution Copper joint venture (**Rio Tinto 55%, BHP 45%**).
- **Discovery:** The Resolution Copper deposit was identified in **1995** by Magma Copper Company geologists during deep drilling (~5,000–7,000 ft)
- **Massive Scale:** The Resolution Copper deposit contains an estimated **1.859 billion metric tons resource**, making it one of the world's largest undeveloped copper deposits.
- **High-Grade Orebody:** Average grade of ~1.52% copper about **62.3 billion pounds of Cu**
- **Strategic Significance:** It could supply up to **25% of U.S. copper demand for 75 years**, create thousands of jobs, and boost Arizona's economy by billions.
- **March 16, 2026:** announced final go-ahead of land swap and \$500 million drilling campaign.



Yellow: Silver King Claims

Pink: Resolution Copper Footprint

Ivanhoe Electric – Neighbor Momentum & Validation

- Ivanhoe Electric (NYSE: IE), led by **Robert Friedland**, has optioned claims directly north and west of Silver King in November 2025
- Currently in the **permitting process** for geophysics with proprietary Typhoon technology and drilling
- **Expected to be fully permitted before the end of 2026**
- **Plans to spend millions on exploration**
- Past drilling on the project intercepted localized high temperature alteration with focused zones of bornite-chalcocite-chalcopyrite mineralization at depth.

Same geological theory as Prismo:

“There is likely another Resolution-style porphyry copper system in the immediate area.”



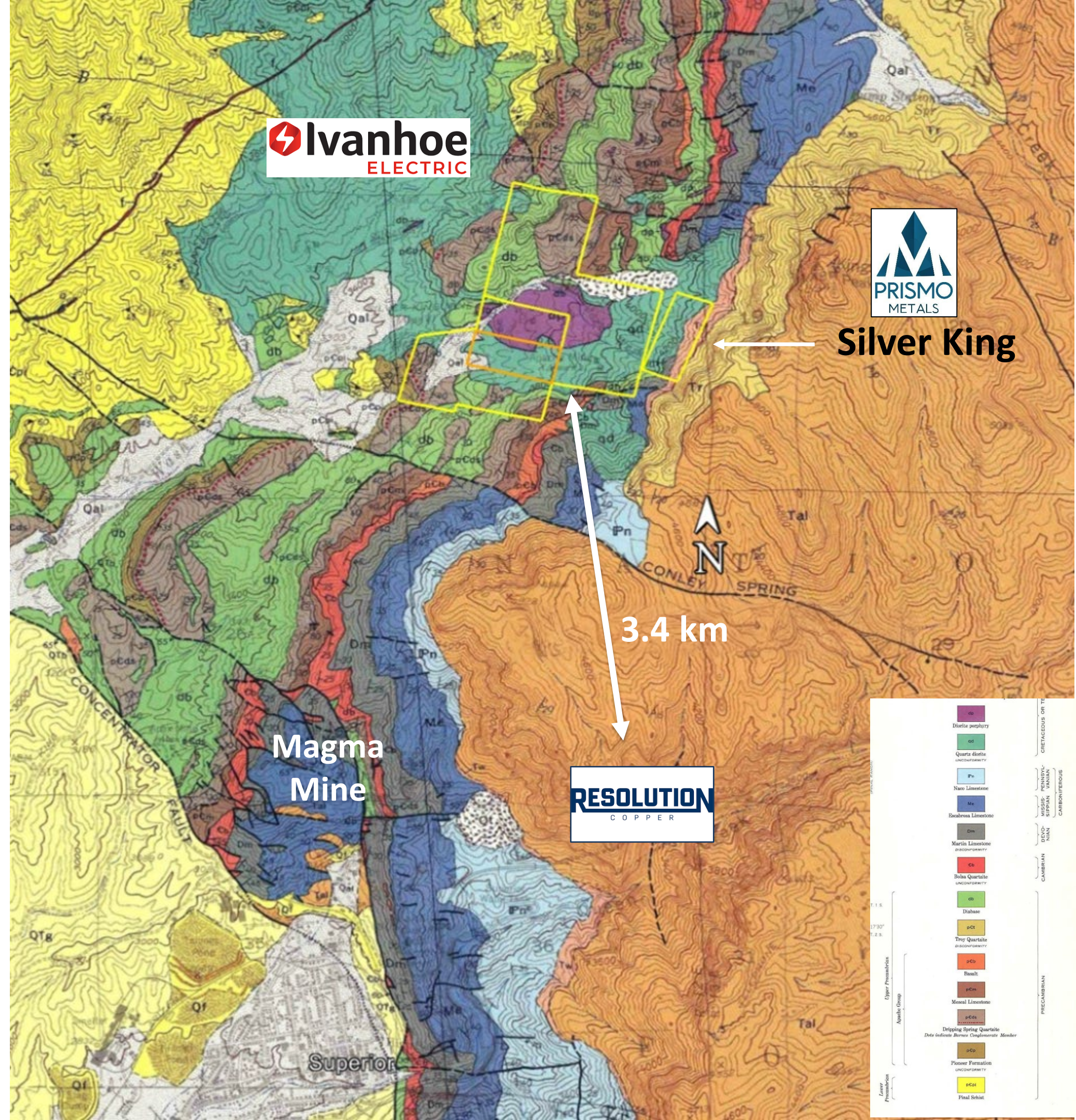
Visit to Ivanhoe Electric project by CEO Alain Lambert & Special Advisor Dr. Linus Keating (April 2026)

More Than Proximity: Shared Geology

- **Favorable Host Rocks:** Mines in area feature Precambrian Pinal Schist basement, diabase sills, and Paleozoic limestones (e.g., Martin Fm.), tilted eastward and intruded by Laramide quartz diorite and andesite.
- **Structural Similarities:** Fault-controlled mineralization via east-trending faults and veins, with hydrothermal alteration including silicification and potassic zoning.
- **Zoning & Potential:** Vertical zoning now proven at Silver King — shallow silver-enriched epithermal system transitioning into deeper potassic porphyry-style copper, exactly as seen at Magma/Resolution.

“We’re heading toward the heat source, not away from it.” – Dr. Linus Keating

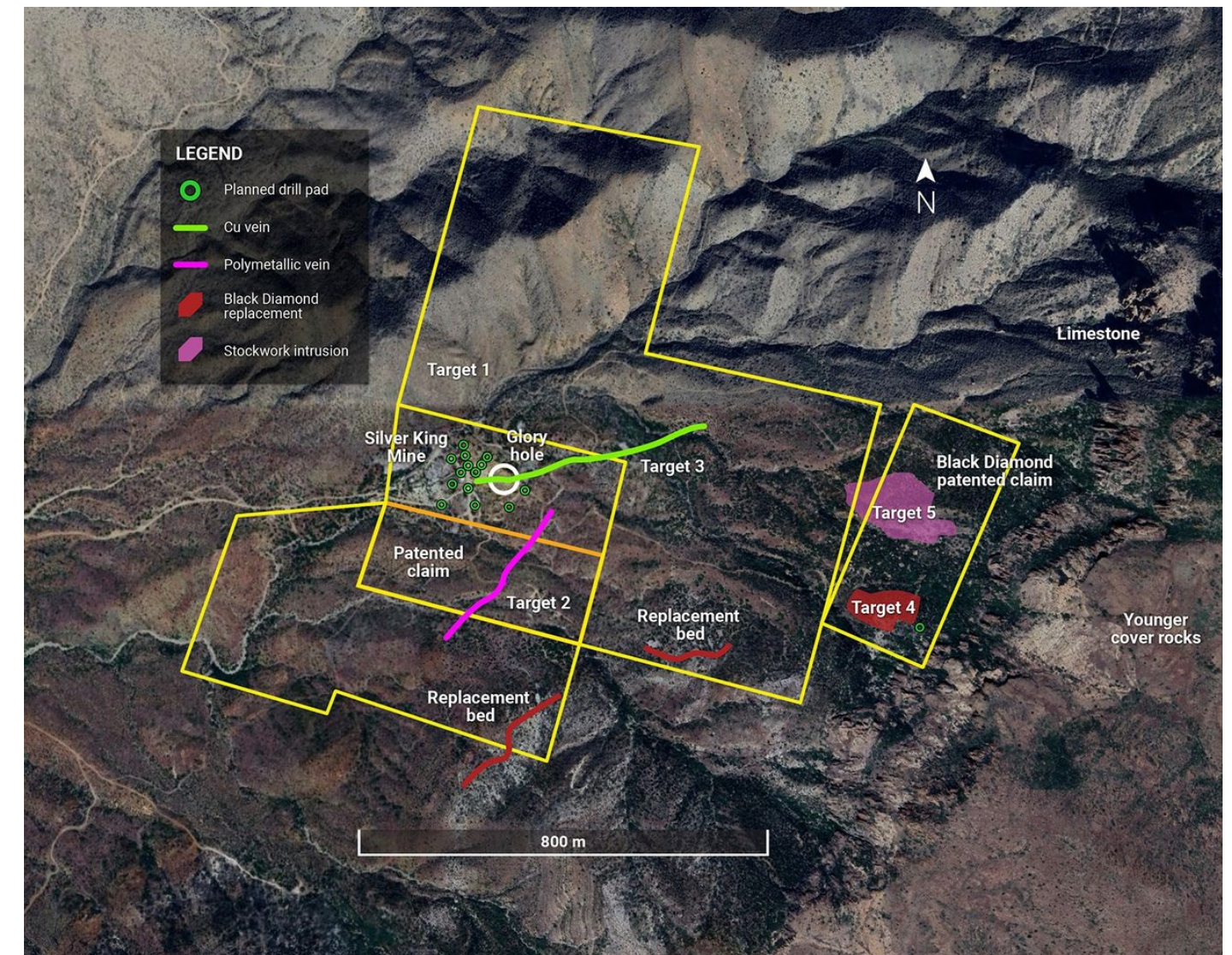
CSE: PRIZ | OTCQB: PMOMF | FSU: 7KU



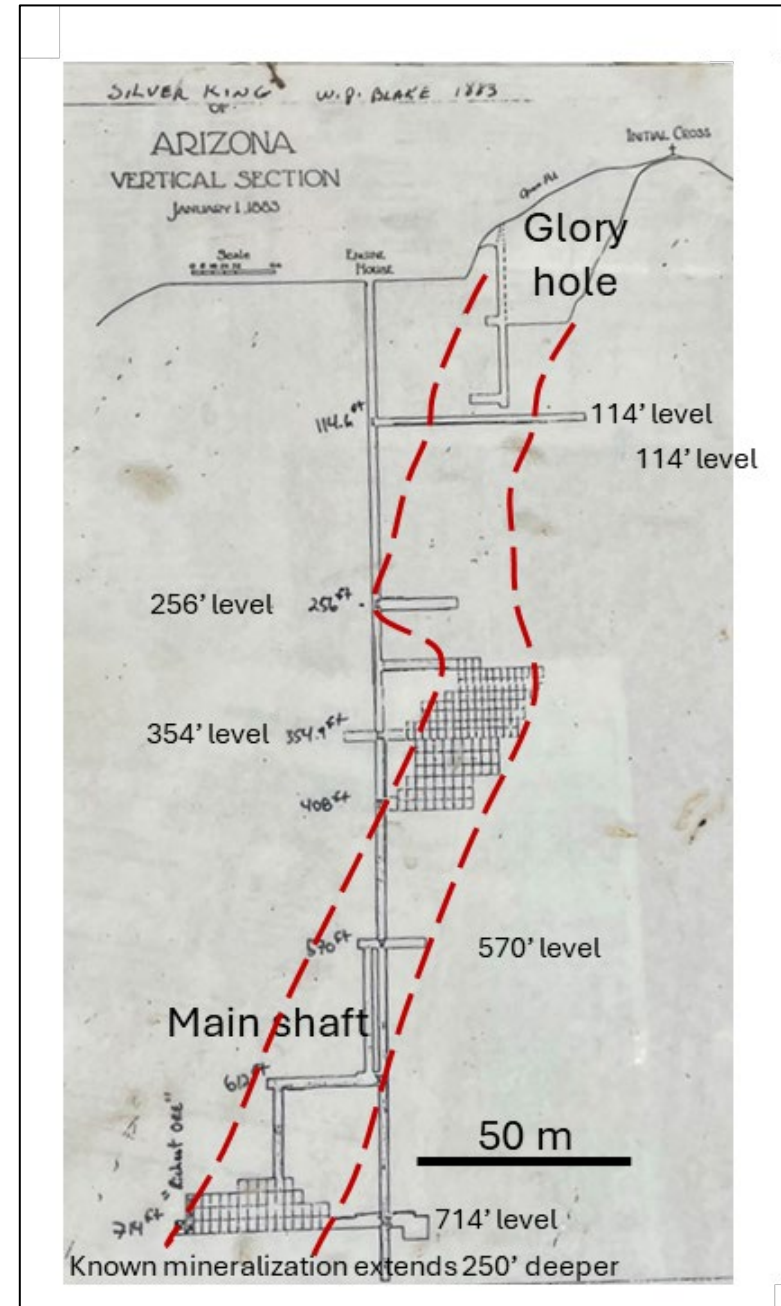
Important Copper Targets On East Side Of Project

Results highlight highly mineralized nature of the area and identify new drill targets

sample	Width (m)	Au (g/t)	Ag (g/t)	Cu (%)	Pb (%)	Zn (%)
BLACK DIAMOND COPPER REPLACEMENT ZONE						
544502	grab	0.47	7	1.35	–	0.02
544507	dump	2.26	25	2.43	–	0.23
544508	0.7	0.73	12	1.11	–	0.28
544575	0.5	1.08	0.15	5.56	0.013	0.03
544578	0.8	0.285	12.43	6.02	–	0.01
CROWN PORPHYRY STOCKWORK ZONE						
544561	2.0	0.02	177	0.07	0.37	0.02
544563	0.5	0.03	176	-	0.09	0.01
544591	1.0	5.19	46.44	0.05	0.21	0.06
544592	1.0	4.06	13.97	0.02	0.10	0.07



First Drill Campaign at Silver King



- 8 holes completed for 1,272 m
- Seven holes were designed to test the upper portions of the historically mined Silver King pipe-like mineralized body
- **One hole (SK-26-07) was a deep test targeting the down-plunge extension below the historic mine workings**
 - Deep hole SK-26-07 (1,600 ft / 488 m) drilled below historic mine bottom
 - Intersected previously unrecognized quartz monzonite intrusion at depth
 - Strong potassic alteration — secondary biotite + pink K-feldspar selvages
 - Abundant disseminated pyrite + pyrite veinlets with local chalcopyrite and pyrrhotite

Clear vertical zoning established: shallow high-grade silver epithermal
→ deeper copper porphyry deposit-style mineralization

Silver bearing minerals and other sulfides

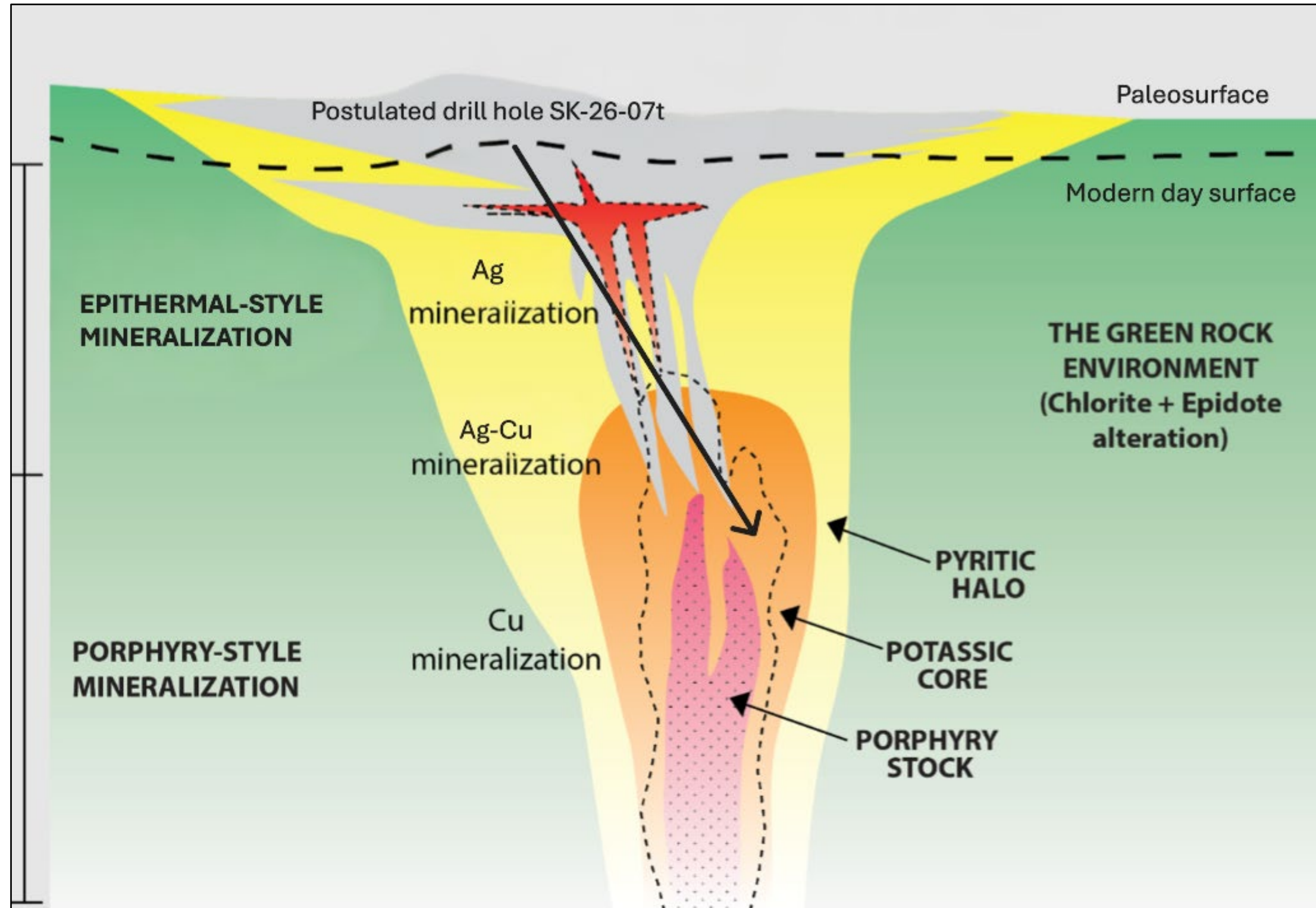


Potassic Alteration



BREAKTHROUGH DRILL HOLE

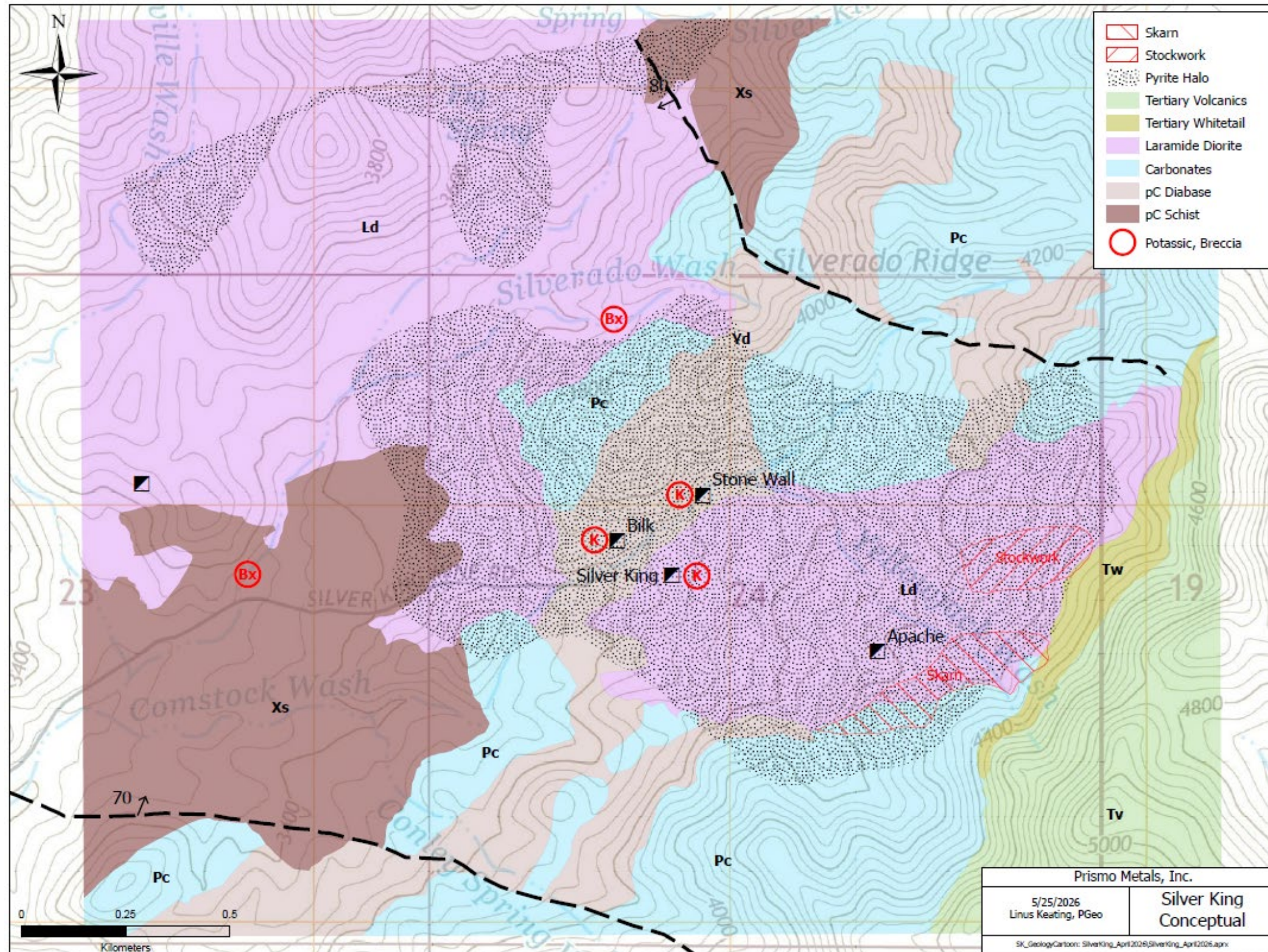
Hole SK-26-07 changed the understanding of the system



- Drilled to 1,600 ft (488 meters)
- Intersected intrusive-hosted mineralization below historic workings
- Strong potassic alteration (biotite + K-feldspar)
- Abundant pyrite with local chalcopyrite
- Classic zoning: epidote + chlorite
- First clear evidence of hypogene copper mineralization

Exploration Underway: Getting Ready for Phase 2 Drilling

Two additional potassic alteration samples identified










- Detailed petrographic thin-section analysis of key rock types and alteration minerals
- Multi-element geochemical sampling and mapping across the entire mineralized embayment
- Comprehensive structural and alteration mapping, including the Crown porphyry stockwork and Black Diamond skarn
- Down-hole geophysics to map the intrusive body and alteration zones in 3D

Major Near-Term Catalysts

- **Phase 1 Assay Results (June):**
 - All 8 holes to be released together, will include the important deeper Hole 7 that intersected potassic alteration and intrusive rocks
- **Finalize Detailed Surface Mapping & Geochemistry (August):**
 - Currently underway results to be released as they become available
- **Downhole Geophysics & Structural Interpretation (August):**
 - Planned to vector Phase 2 drilling
- **Announce Phase 2 Drill Program Design (September):**
 - Designed to target the porphyry copper core
- **Ivanhoe Electric to be permitted for geophysics and drilling (Sept-Oct)**
- **Start of Phase 2 Drill Campaign (Sept-Oct)**

- Small market cap (\$9.2 million)
- Catalyst rich
- Looking for Resolution style deposit in “elephant country”
- Ivanhoe Electric has the same geological theory as Prismo Metals

Comparison Table: Canadian-Listed Porphyry Copper Explorers

							
		Arizona Focused Exploration Companies			Americas Focused Exploration Companies		
Ticker	Prismo Metals (CSE: PRIZ)	Intrepid Metals (TSXV: INTR)	Copper Fox Metals (TSXV: CUU)	Barksdale Res. (TSXV: BRO)	Algo Grande Copper (TSXV: ALGR)	Super Copper (CSE: CUPR)	San Lorenzo Gold (TSXV: SLG)
Primary Project	Silver King	Corral Copper	Mineral Mountain	Sunnyside	Adelita	Cordillera Cobre	Salvadora
Location	Arizona, USA	Arizona, USA	Arizona, USA	Arizona, USA	Sonora, Mexico	Chile	Chile
Nearest Major Deposit	Resolution (Rio Tinto/BHP) 3.4 km	Bisbee (historic major Cu camp)	Resolution (Rio Tinto/BHP) – 25 km	Adjacent to South32	Buenavista / Cananea district	Candelaria / Manto Verde	El Salvador (Codelco) – 15 km
Stage & Drilling Status	Phase 1 completed 8 holes. 1,272 meters	~10,000 m drilling completed	Maiden drilling completed (2026)	Initial drilling completed	Initial drilling completed	Surface work + geophysics; early drilling planned	Early stage drilling
Market Cap (CAD)	~9 million	~65–89 million	~345–351 million	~\$115 million	~\$27–\$28 million	~\$31–\$34 million	~\$258–\$351 million
Key Highlights	Epithermal Ag vein upper expression of potential porphyry; immediate neighbor to Ivanhoe Electric and Rio/BHP	Porphyry copper-gold + CRD system; Teck Resources strategic investor	Large blind Laramide porphyry target; recent propylitic zone intercepts	Large Laramide porphyry system with breccia-hosted mineralization	Skarn system with strong porphyry potential at depth; Cu-Ag-Au focus	Porphyry copper targets in prolific Atacama region	Multiple porphyry copper-gold targets in proven mega-porphyry belt

Prismo Metals

- Lowest market cap
- Recent positive drilling
- Unique location
- Large target

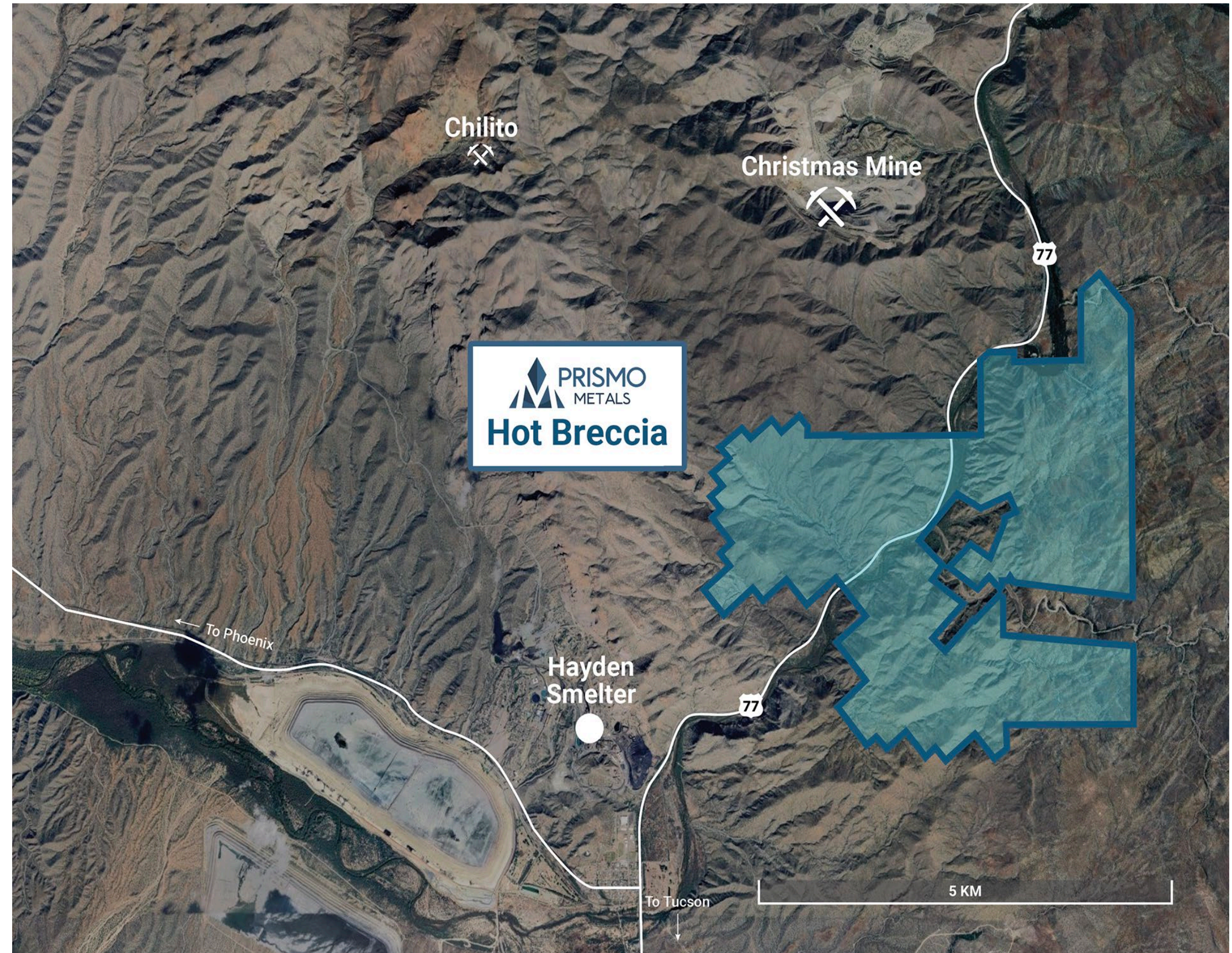
Fully permitted Hot Breccia

Indirect interest through 24% ownership of
Blade Resources

LARGE COPPER PROSPECT

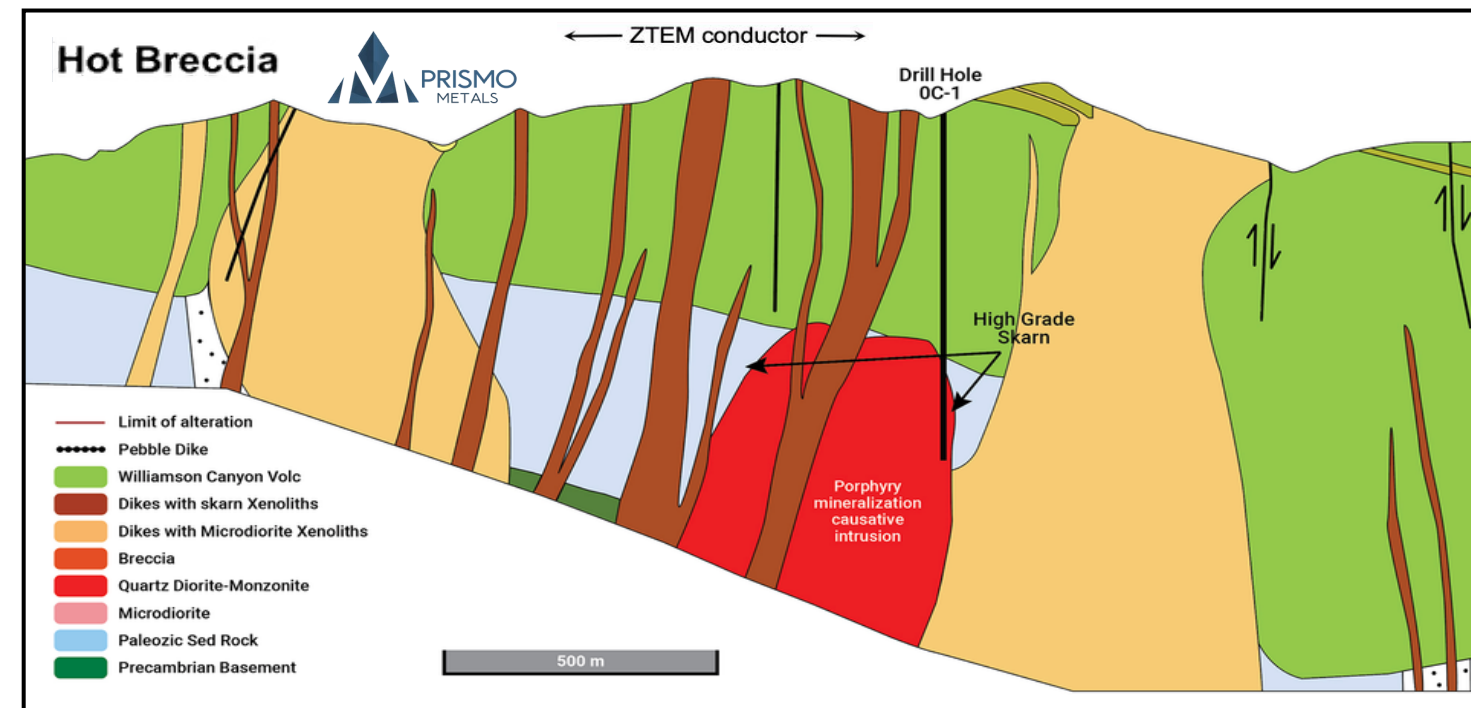
Looking for Resolution style target

- Located in district that hosts many of North America's largest porphyry copper deposits and over 200 known deposits
- Includes giants like Resolution, Morenci, Ray, Miami, and Bagdad, operated by majors like BHP, Freeport-McMoRan, Rio Tinto

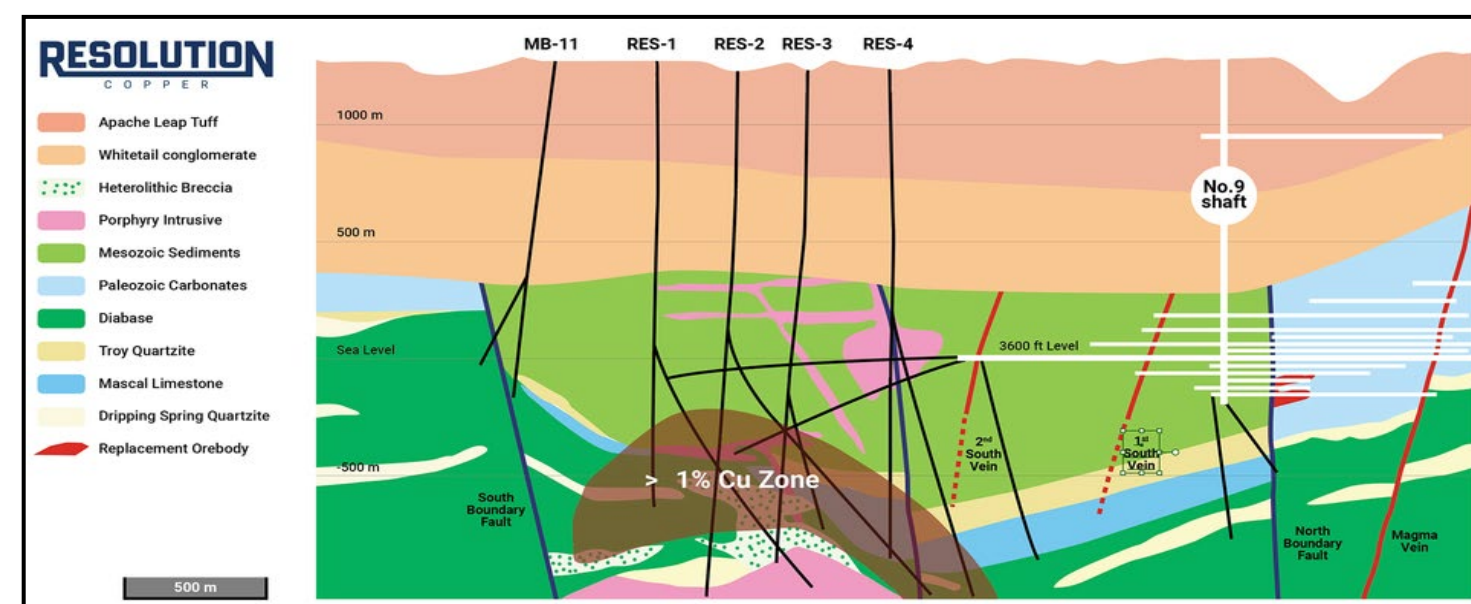


Fully permitted Hot Breccia

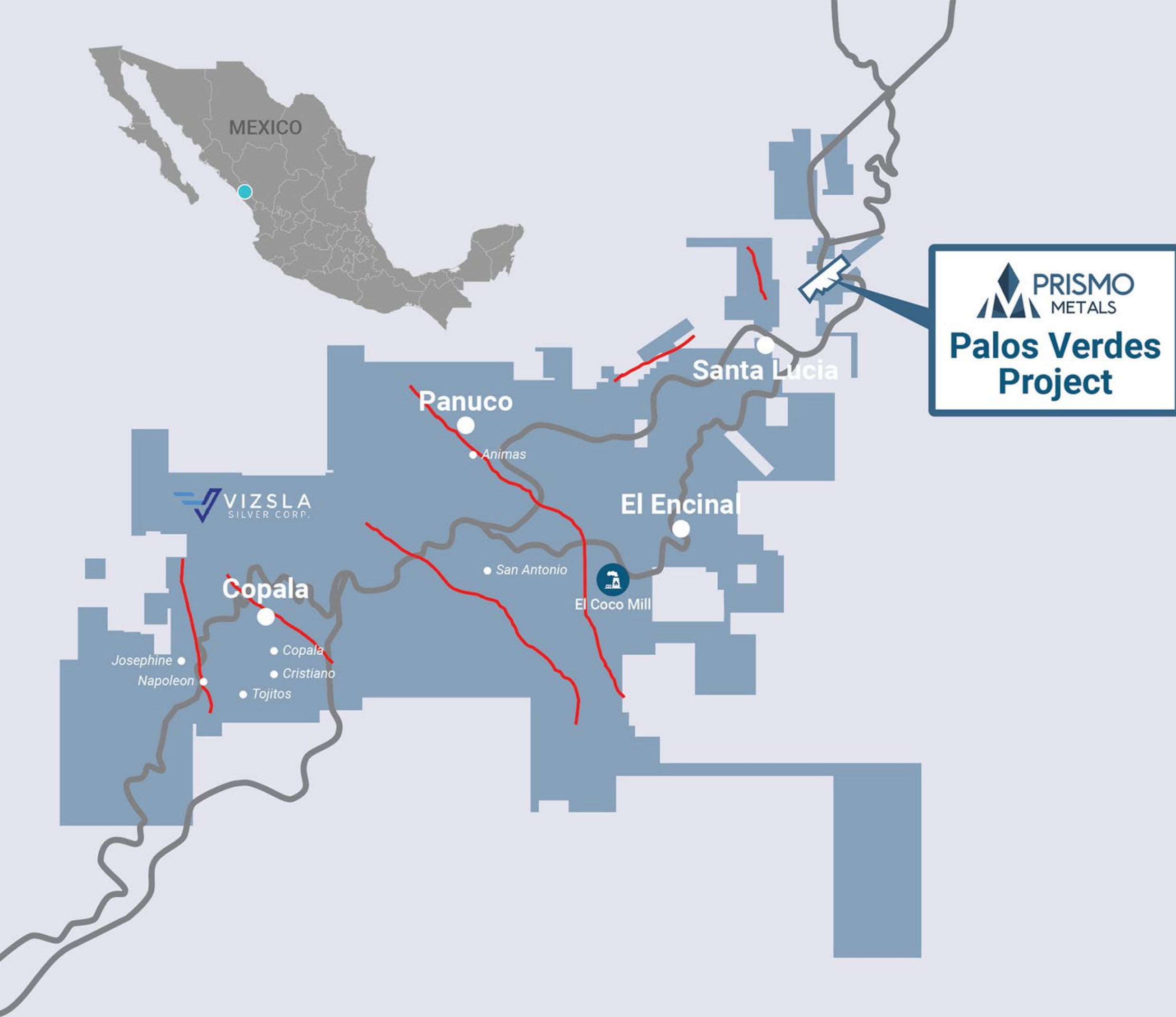
Indirect interest through 24% ownership of Blade Resources



- 40 km southeast of Resolution Copper
- Shares same Laramide-age geology and host rocks as Resolution, but starts much closer to surface
- Geological analogue to the historic Christmas Mine, which produced ~ 60M pounds of copper at grades exceeding 3% copper
- 2023 ZTEM geophysics revealed a large conductive anomaly comparable in scale to Resolution
- Builds on historic Kennecott (now Rio Tinto & Phelps Dodge drilling >1% copper intercepts) with modern data and AI to refine targets for planned 5,000 m drill program planned targeting skarn and porphyry-style mineralization



Schematic view of Hot Breccia from underneath the surface showing cross sections through the Christmas deposit and Hot Breccia, and conductive anomaly from ZTEM survey under geology similar to the Resolution deposit.



Palos Verdes

Dual exposure to Vizsla's district-scale development and Prismo exploration upside

PANUCO

a productive, high potential silver district in Mexico

VIZSLA UNIQUE LOCATION

Surrounded on three sides by Vizsla Silver

6,000 METERS OF DRILL RESULTS

- Mineralization and results comparable to Vizsla Silver
- 33 holes include bonanza grades of 102 g/t gold, 3,100 g/t silver with base metals, and up to 11,520 g/t AgEq over 0.5 m, among the highest in the district

Capital Structure

Shares held by founders, insiders, advisors & partners	29,045,648	25%
Vizsla Silver Corp (TSXV: VZLA)	5,100,000	5%
Float	81,017,668	70%
Total Shares Outstanding (basic)	115,163,316	100%
Officers, directors & advisor options ⁽¹⁾	4,000,000	\$760,000
Officers, directors & advisor SARs & RSUs	1,050,000	N/A
Warrants ⁽²⁾	43,836,227	\$7,890,521
Sub total	48,049,543	\$8,650,521
Total Outstanding (Fully diluted)	164,049,543	

(1) WAEP of \$0.19

(2) WAEP of \$0.18

Strong ownership by Founders, Management, Advisors

25%

Management, Founders & Advisors

5%

Vizsla Silver (TSXV: VZLA)

Market cap: \$9.2 million ⁽¹⁾

(1) As of May 21st, 2026



CONTACT US

prismometals.com



linkedin.com/company/prismo-metals-inc/



x.com/PrismoMetals



instagram.com/prismometals



youtube.com/@prismometals



facebook.com/PrismoMetals



1110-1111 Melville Street,
Vancouver, BC
V6E 3V6



info@prismometals.com